

LEA Name : West Chester Area SD
Address : 782 Springdale Drive
Exton , PA 19341

County : Chester
AUN Number : 124159002
LEA Type : SD

Annual Financial Report Accuracy Certification Statement

For Fiscal Year Ending
6/30/2019

Pennsylvania Department of Education
&
Office of Comptroller Operations

PDE-2056: Intermediate Unit
PDE-2057: School District, AVTS/CTC, Charter School,
and Special Program Jointure

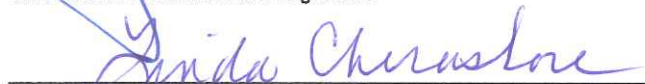
CERTIFICATION: By signing this page I agree that the electronic data submitted is a complete and accurate statement of the financial operations and status of the local education agency for the fiscal year. It has been prepared in accordance with generally accepted accounting principles and established Commonwealth of PA reporting guidelines.



Chief School Administrator Signature

11-05-19

Date



Board Secretary Signature

11-05-19

Date

Shawn Ryan

Contact Person

(484)266-1022 Ext :

Contact Person Telephone Number

sryan2@wcasd.net

Contact Person E-mail Address

Contact Person Fax Number

Audit Certification
Annual Financial Report:
For Fiscal Year Ending **6/30/2019**
(Pursuant to PA School Code Section 218(b))

LEA Name : West Chester Area SD
AUN Number : 124159002
County : Chester

Audit Certification Due: 12/31/2019

This certification is applicable to the Annual Financial Report data submitted through the Consolidated Financial Reporting System on: 11/7/19
Date

Auditing Firm:
Barbacane, Thornton & Company LLP

CERTIFICATION: By signing this page I agree that the financial statements of the school have been properly audited as noted above pursuant to Article XXIV, and in the auditor's professional opinion, the Annual Financial Report (PDE-2057) submitted on the date referenced is materially consistent with the audited financial statements.

Chief School Administrator


Signature 1-24-20
Date

Shawn Ryan
Contact Person
sryan2@wcasd.net
Contact Person E-mail Address

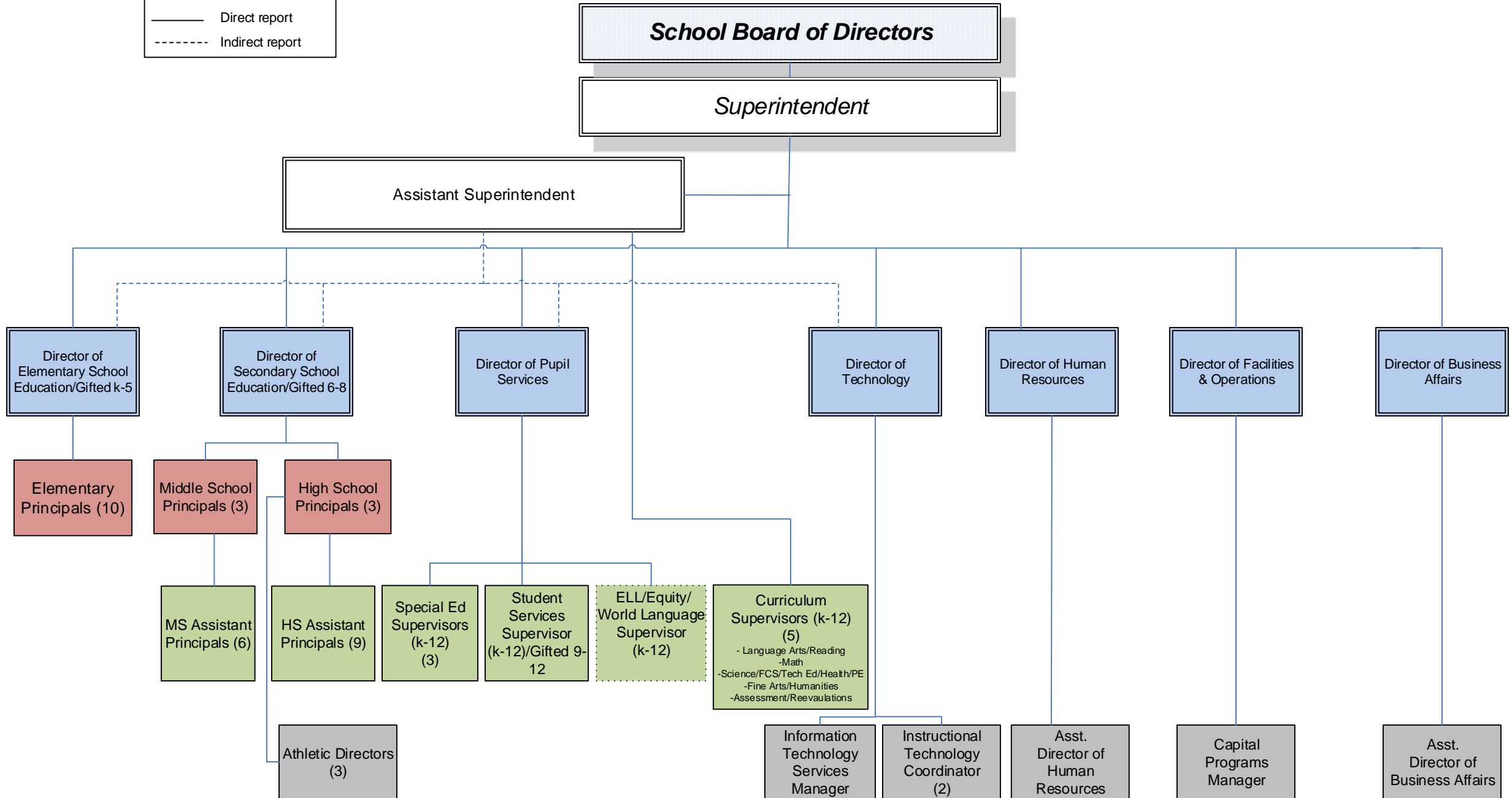
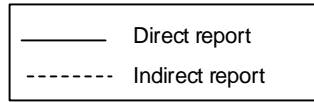
Board Secretary


Signature 1-24-2020
Date

(484)266-1022 Ext :
Contact Person Telephone Number
Contact Person Fax Number

WCASD Management Team

June 2019



<u>Val Number</u>	<u>Description</u>	<u>Justification</u>
13092	<p>REG: A large amount has been reported as local revenue in Fund 32, account 6000 which should only include interest earnings of this fund. Correct or provide a brief explanation of the revenue reported.</p> <p>REG, Fund 32, Local Revenue Line 6000: \$620,540.00</p>	<p>This amount reported in revenue line 6000 represents investment earnings on funds allocated to Fund 32. The portfolio saw increased performance in FY 2019 from FY 2018.</p>
41162	<p>Expenditure Detail, Salaries (Object 100) and Benefits (Object 200 series): Amounts must be entered for both Salaries and Benefits.</p> <p>Please verify following fund and function codes: Fund 10 Function 2330;</p>	<p>The amount reported in the 200s represents the Social Security/MC portion of payment to a tax collector. The amount paid for his services is included in the 300s section of this function code.</p>

Amounts Expressed in Whole Dollars	<u>General Fund</u> <u>(10)</u>	<u>Public Purpose Trust</u> <u>(27)</u>	<u>Other Compt Approved</u> <u>(28)</u>	<u>Athletic / Activity</u> <u>(29)</u>	<u>Capital Reserve (690.</u> <u>1850)</u> <u>(31)</u>
Assets And Deferred Outflows Of Resources					
Assets					
0100 Cash and Cash Equivalents	20,410,775				
0110 Investments	29,818,427				
0120 Taxes Receivable	3,117,633				
0130 Due From Other Funds					
0141 Due From Other Governments	7,696,457				
0142 State Revenue Receivable					
0143 Federal Revenue Receivable					
0145 Other Intergovernmental Revenue Receivable					
0146 Due from Primary Government					
0147 Due from Component Unit					
0150 Other Receivables	1,129,797				
0170 Inventories					
0180 Prepaid Expenses (Expenditures)	2,748,654				
0190 Other Current Assets					
Total Assets	\$64,921,743				
0910 Deferred Outflows of Resources					
Total Assets And Deferred Outflows Of Resources	\$64,921,743				

Amounts Expressed in Whole Dollars

	<u>Capital Reserve (1431)</u> <u>(32)</u>	<u>Other Capital Projects</u> <u>Fund</u> <u>(39)</u>	<u>Debt Service</u> <u>(40)</u>	<u>Permanent</u> <u>(90)</u>	<u>Total Governmental</u> <u>Funds</u>
Assets And Deferred Outflows Of Resources					
Assets					
0100 Cash and Cash Equivalents	1,531,386	728,124			22,670,285
0110 Investments	18,863,817	1,440,587			50,122,831
0120 Taxes Receivable					3,117,633
0130 Due From Other Funds					
0141 Due From Other Governments					7,696,457
0142 State Revenue Receivable					
0143 Federal Revenue Receivable					
0145 Other Intergovernmental Revenue Receivable					
0146 Due from Primary Government					
0147 Due from Component Unit					
0150 Other Receivables	23,625				1,153,422
0170 Inventories					
0180 Prepaid Expenses (Expenditures)	632,750				3,381,404
0190 Other Current Assets					
Total Assets	\$21,051,578	\$2,168,711			\$88,142,032
0910 Deferred Outflows of Resources					
Total Assets And Deferred Outflows Of Resources	\$21,051,578	\$2,168,711			\$88,142,032

Amounts Expressed in Whole Dollars

	<u>General Fund</u> <u>(10)</u>	<u>Public Purpose Trust</u> <u>(27)</u>	<u>Other Compt Approved</u> <u>(28)</u>	<u>Athletic / Activity</u> <u>(29)</u>	<u>Capital Reserve (690.</u> <u>1850)</u> <u>(31)</u>
Liabilities And Deferred Inflows Of Resources And Fund Balances					
Liabilities					
0400 Due to Other Funds	3,152				
0411 Due to Other Governments					
0412 Due to Primary Government					
0413 Due to Component Unit					
0420 Accounts Payable	6,582,873				
0430 Contracts Payable					
0440 Current Portion of Long-Term Debt					
0450 Short-Term Payables					
0461 Accrued Salaries and Benefits					
0462 Payroll Deductions and Withholding	17,609,028				
0480 Unearned Revenues	56,516				
0490 Other Current Liabilities					
Total Liabilities	\$24,251,569				
0950 Deferred Inflows of Resources	1,801,350				
Fund Balances					
0810 Nonspendable Fund Balance	2,748,654				
0820 Restricted Fund Balance					
0830 Committed Fund Balance	4,159,909				
0840 Assigned Fund Balance	17,529,073				
0850 Unassigned Fund Balance	14,431,188				
Total Fund Balances	\$38,868,824				
Total Liabilities, Deferred Inflows Of Resources And Fund Balances	\$64,921,743				

Amounts Expressed in Whole Dollars	<u>Capital Reserve (1431)</u> <u>(32)</u>	<u>Other Capital Projects</u> <u>Fund</u> <u>(39)</u>	<u>Debt Service</u> <u>(40)</u>	<u>Permanent</u> <u>(90)</u>	<u>Total Governmental</u> <u>Funds</u>
Liabilities And Deferred Inflows Of Resources And Fund Balances					
Liabilities					
0400 Due to Other Funds					3,152
0411 Due to Other Governments					
0412 Due to Primary Government					
0413 Due to Component Unit					
0420 Accounts Payable	494,185	3,478,570			10,555,628
0430 Contracts Payable					
0440 Current Portion of Long-Term Debt					
0450 Short-Term Payables					
0461 Accrued Salaries and Benefits					
0462 Payroll Deductions and Withholding					17,609,028
0480 Unearned Revenues					56,516
0490 Other Current Liabilities					
Total Liabilities	\$494,185	\$3,478,570			\$28,224,324
0950 Deferred Inflows of Resources					1,801,350
Fund Balances					
0810 Nonspendable Fund Balance	632,750				3,381,404
0820 Restricted Fund Balance	19,924,643				19,924,643
0830 Committed Fund Balance					4,159,909
0840 Assigned Fund Balance					17,529,073
0850 Unassigned Fund Balance		(1,309,859)			13,121,329
Total Fund Balances	\$20,557,393	(\$1,309,859)			\$58,116,358
Total Liabilities, Deferred Inflows Of Resources And Fund Balances	\$21,051,578	\$2,168,711			\$88,142,032

Amounts Expressed in Whole Dollars	<u>General Fund</u> <u>(10)</u>	<u>Public Purpose Trust</u> <u>(27)</u>	<u>Other Compt Approved</u> <u>(28)</u>	<u>Athletic / Activity</u> <u>(29)</u>	<u>Capital Reserve (690.</u> <u>1850)</u> <u>(31)</u>
Revenues					
6000 Revenue from Local Sources	204,505,151				
7000 Revenue from State Sources	42,679,137				
8000 Revenue from Federal Sources	2,337,351				
Total Revenues	\$249,521,639				
Expenditures					
1000 Instruction	142,088,011				
2000 Support Services	64,461,337				
3000 Operation of Non-Instructional Services	5,180,293				
4000 Facilities Acquisition, Construction and Improvement Services					
5110 Debt Service	25,571,842				
5130 Refund of Prior Year Revenues / Receipts					
Total Expenditures	\$237,301,483				
Excess (Deficiency) Of Revenues Over Expenditures	\$12,220,156				
Other Financing Sources (Uses)					
9110 Face Value of Bonds Issued					
9120 Proceeds from Refunding of Bonds					
9130 Bond Premiums					
9200 Proceeds from Extended-Term Financing					
9300 Interfund Transfers - IN					
9400 Sale of or Compensation for Loss of Fixed Assets					
9710 Transfers from Component Units					
9720 Transfers from Primary Governments					
9910 Other Financing Sources Not Listed in the 9000 Series					
9990 Insurance Recoveries					
5120 Debt Service – Refunded Bonds					
5150 Bond Discounts					
5200 Interfund Transfers – Out	5,257,722				
5300 Transfers Out to Component Units/Primary Governments					
Total Other Financing Sources (Uses)	(\$5,257,722)				

Amounts Expressed in Whole Dollars	<u>Capital Reserve (1431)</u> <u>(32)</u>	<u>Other Capital Projects</u> <u>Fund</u> <u>(39)</u>	<u>Debt Service</u> <u>(40)</u>	<u>Permanent</u> <u>(90)</u>	<u>Total Governmental</u> <u>Funds</u>
Revenues					
6000 Revenue from Local Sources	620,540				205,125,691
7000 Revenue from State Sources					42,679,137
8000 Revenue from Federal Sources					2,337,351
Total Revenues	\$620,540				\$250,142,179
Expenditures					
1000 Instruction					142,088,011
2000 Support Services	5,683,276	176,732			70,321,345
3000 Operation of Non-Instructional Services					5,180,293
4000 Facilities Acquisition, Construction and Improvement Services	2,099,072	15,968,305			18,067,377
5110 Debt Service					25,571,842
5130 Refund of Prior Year Revenues / Receipts					
Total Expenditures	\$7,782,348	\$16,145,037			\$261,228,868
Excess (Deficiency) Of Revenues Over Expenditures	(\$7,161,808)	(\$16,145,037)			(\$11,086,689)
Other Financing Sources (Uses)					
9110 Face Value of Bonds Issued		9,990,000			9,990,000
9120 Proceeds from Refunding of Bonds					
9130 Bond Premiums					
9200 Proceeds from Extended-Term Financing					
9300 Interfund Transfers - IN	5,257,722				5,257,722
9400 Sale of or Compensation for Loss of Fixed Assets					
9710 Transfers from Component Units					
9720 Transfers from Primary Governments					
9910 Other Financing Sources Not Listed in the 9000 Series					
9990 Insurance Recoveries					
5120 Debt Service – Refunded Bonds					
5150 Bond Discounts					
5200 Interfund Transfers – Out					5,257,722
5300 Transfers Out to Component Units/Primary Governments					
Total Other Financing Sources (Uses)	\$5,257,722	\$9,990,000			\$9,990,000

Amounts Expressed in Whole Dollars	<u>General Fund</u> <u>(10)</u>	<u>Public Purpose Trust</u> <u>(27)</u>	<u>Other Compt Approved</u> <u>(28)</u>	<u>Athletic / Activity</u> <u>(29)</u>	<u>Capital Reserve</u> <u>(690.</u> <u>1850)</u> <u>(31)</u>
Special And Extraordinary Items					
9920 Special Items – Gains					
9930 Extraordinary Items – Gains					
5520 Special Items – Losses					
5530 Extraordinary Items – Losses					
Net Change In Fund Balances	\$6,962,434				
Fund Balance					
0001 Fund Balance - Beginning of Fiscal Year	31,906,388				
Fund Balance - End Of Year	\$38,868,822				

Amounts Expressed in Whole Dollars	<u>Capital Reserve (1431)</u> <u>(32)</u>	<u>Other Capital Projects</u> <u>Fund</u> <u>(39)</u>	<u>Debt Service</u> <u>(40)</u>	<u>Permanent</u> <u>(90)</u>	<u>Total Governmental</u> <u>Funds</u>
Special And Extraordinary Items					
9920 Special Items – Gains					
9930 Extraordinary Items – Gains					
5520 Special Items – Losses					
5530 Extraordinary Items – Losses					
Net Change In Fund Balances	(\$1,904,086)	(\$6,155,037)			(\$1,096,689)
Fund Balance					
0001 Fund Balance - Beginning of Fiscal Year	22,461,479	4,845,178			59,213,045
Fund Balance - End Of Year	\$20,557,393	(\$1,309,859)			\$58,116,356

Amounts Expressed in Whole Dollars	<u>Food Service</u> <u>(51)</u>	<u>Child Care</u> <u>Operations</u> <u>(52)</u>	<u>Other Enterprise</u> <u>(58)</u>	<u>TOTAL</u>	<u>Internal Service</u> <u>(60)</u>
Assets And Deferred Outflows Of Resources					
Current Assets					
0100 Cash and Cash Equivalents	74,533			74,533	
0110 Investments	1,221,631			1,221,631	
0130 Due From Other Funds	3,152			3,152	
0141 Due From Other Governments	34,433			34,433	
0142 State Revenue Receivable					
0143 Federal Revenue Receivable					
0146 Due from Primary Government					
0147 Due from Component Unit					
0150 Other Receivables	7,534			7,534	
0170 Inventories	2,004			2,004	
0180 Prepaid Expenses (Expenditures)					
0190 Other Current Assets					
Total Current Assets	\$1,343,287			\$1,343,287	
Noncurrent Assets					
0211 Land					
0212 Site Improvements (Net)					
0220 Buildings and Building Improvements (Net)					
0230 Machinery, Equipment and Furniture (Net)	702,071			702,071	
0250 Construction in Progress					
0260 Long Term Prepayments					
0290 Other Noncurrent Assets					
Total Noncurrent Assets	\$702,071			\$702,071	
0910 Deferred Outflows of Resources					
Total Assets And Deferred Outflows Of Resources	\$2,045,358			\$2,045,358	

Amounts Expressed in Whole Dollars	<u>Food Service</u> <u>(51)</u>	<u>Child Care</u> <u>Operations</u> <u>(52)</u>	<u>Other Enterprise</u> <u>(58)</u>	<u>TOTAL</u>	<u>Internal Service</u> <u>(60)</u>
Liabilities And Deferred Inflows Of Resources And Net Position					
Current Liabilities					
0400 Due to Other Funds					
0411 Due to Other Governments					
0413 Due to Component Unit					
0420 Accounts Payable	242,792			242,792	
0430 Contracts Payable					
0440 Current Portion of Long-Term Debt					
0450 Short-Term Payables					
0461 Accrued Salaries and Benefits					
0462 Payroll Deductions and Withholding					
0480 Unearned Revenues	163,400			163,400	
0490 Other Current Liabilities					
Total Current Liabilities	\$406,192			\$406,192	
Noncurrent Liabilities					
0510 Bonds Payable					
0520 Extended-Term Financing Agreements Payable					
0530 Lease-Purchase Obligations					
0540 Accumulated Compensated Absences					
0550 Authority Lease Obligations					
0560 Other Post-Employment Benefits (OPEB)					
0570 Net Pension Liability					
0599 Other Noncurrent Liabilities					
Total Noncurrent Liabilities					
Total Liabilities	\$406,192			\$406,192	
0950 Deferred Inflows of Resources					
Net Position					
0791 Net Investment in Capital Assets		702,071		702,071	
0008 Restricted Net Position (0792 – 0798)					
0799 Unrestricted Net Position		937,095		937,095	
Total Net Position		\$1,639,166		\$1,639,166	
Total Liabilities And Deferred Inflows Of Resources And Net Position		\$2,045,358		\$2,045,358	

Amounts Expressed in Whole Dollars	<u>Food Service</u> <u>(51)</u>	<u>Child Care Operations</u> <u>(52)</u>	<u>Other Enterprise</u> <u>(58)</u>	<u>TOTAL</u>	<u>Internal Service</u> <u>(60)</u>
Operating Revenues					
6600 Food Service Revenue	2,627,303			2,627,303	
0071 Charges for Services					
0072 Other Operating Revenue					
Total Operating Revenues	\$2,627,303			\$2,627,303	
Operating Expenses					
100 Personnel Services – Salaries					
200 Personnel Services – Employee Benefits					
300 Purchased Professional and Technical Services					
400 Purchased Property Services					
500 Other Purchased Services	3,371,039			3,371,039	
600 Supplies					
740 Depreciation	111,880			111,880	
810 Dues and Fees					
890 Miscellaneous Expenditures					
Total Operating Expenses	\$3,482,919			\$3,482,919	
Operating Income (Loss)	(\$855,616)			(\$855,616)	
Non Operating Revenues (Expenses)					
6500 Earnings on Investments	31,825			31,825	
6920 Contributions and Donations from Private Sources	4,809			4,809	
6930 Gains or Losses on Sale of Fixed Assets	9,704			9,704	
6991 Refunds of a Prior Year Expenditure					
7000 Revenue from State Sources	58,970			58,970	
8000 Revenue from Federal Sources	857,865			857,865	
9990 Insurance Recoveries					
820 Claims and Judgments Against the LEA					
830 Interest					
TOTAL Non Operating Revenues (Expenses)	\$963,173			\$963,173	
Income (Loss) Before Contributions And Transfers	\$107,557			\$107,557	

Amounts Expressed in Whole Dollars	<u>Food Service</u> <u>(51)</u>	<u>Child Care Operations</u> <u>(52)</u>	<u>Other Enterprise</u> <u>(58)</u>	<u>TOTAL</u>	<u>Internal Service</u> <u>(60)</u>
Contributions, Transfers, and Special and Extraordinary Items					
5200 Interfund Transfers – Out					
5300 Transfers Out to Component Units/Primary Governments					
5520 Special Items – Losses					
5530 Extraordinary Items – Losses					
9300 Interfund Transfers - IN					
9500 Capital Contributions					
9700 Transfers IN From Component Units/Primary Governments					
9920 Special Items – Gains					
9930 Extraordinary Items – Gains					
Change In Net Position	\$107,557			\$107,557	
0002 Net Position - Beginning of Fiscal Year	1,531,609			1,531,609	
0003 Accounting Changes / Residual Equity Transfers					
Net Position - End Of Year	\$1,639,166			\$1,639,166	

Amounts Expressed in Whole Dollars	<u>Food Service</u> <u>(51)</u>	<u>Child Care Operations</u> <u>(52)</u>	<u>Other Enterprise</u> <u>(58)</u>	<u>TOTAL</u>	<u>Internal Service(60)</u>
Cash Flows From Operating Activities					
0011 Cash Receipts From Users	2,623,866			2,623,866	
0012 Cash Receipts From Assessments Made to Other Funds					
0013 Cash Receipts From Earnings on Investments					
0014 Cash Receipts From Other Operating Revenue					
0015 Cash Payments To Employees For Services					
0016 Cash Payments For Insurance Claims					
0017 Cash Payments To Suppliers For Goods and Services	3,242,525			3,242,525	
0018 Cash Payments For Other Operating Expenses					
Net Cash Provided By (Used For) Operating Activities	(\$618,659)			(\$618,659)	
Cash Flows From Non-Capital Financing Activities					
0021 Receipts From Local Sources - 6000	4,809			4,809	
0022 Receipts From State Sources - 7000	66,275			66,275	
0023 Receipts From Federal Sources -8000	833,923			833,923	
0024 Notes and Loans Received (Repaid)					
0025 Interest Paid on Notes/Loans - 5100-830					
0026 Operating Transfers In (Out)/Residual Equity Trans					
0027 Operating Transfers In (Out) Primary Government / Comp Unit					
0028 Receipts From Refund of Prior Year Expenditures - 6991					
0029 Special and Extraordinary Gains (losses)					
0030 Receipts from Insurance Recoveries -9990					
Net Cash Prov By (Used for) Non-Capital Financing Activities	\$905,007			\$905,007	
Cash Flows From Capital and Related Financing Activities					
0031 Payments For Fac Acq, Const, and Imp - 4000	(131,881)			(131,881)	
0032 Gain / (Loss) on Sale of Fixed Assets - 6930	9,704			9,704	
0033 Proceeds From Extended Term Financing - 9200					
0034 Principal Paid on Financing Agreements					
0035 Interest Paid on Financing Agreements - 5100-830					
0036 (Inc) Dec in Contributed Capital					
Net Cash Prov By (Used for) Capital and Related Financing Activities	(\$122,177)			(\$122,177)	
Cash Flows From Investing Activities					
0041 Earnings on Investments - 6500	31,825			31,825	
0042 Purchase of Inv Securities / Deposits to Inv Pools	(183,820)			(183,820)	
0043 Receipts From Investment Pool Withdrawals					
0044 Proceeds from Sale and Maturity of Inv Securities					

LEA : 124159002 West Chester Area SD

Printed 2/3/2020 3:26:50 PM

0045 Loans Received (Paid)

Net Cash Prov By (Used for) Investing Activities	(\$151,995)	(\$151,995)
---	--------------------	--------------------

	<u>Food Service</u> <u>(51)</u>	<u>Child Care Operations</u> <u>(52)</u>	<u>Other Enterprise</u> <u>(58)</u>	<u>TOTAL</u>	<u>Internal Service</u> <u>(60)</u>
Net Increase (Decrease) in Cash Flows	12,176			12,176	
0004 Cash and Cash Equivalents Beginning of Year					
Cash and Cash Equivalents at Year End	\$12,176			\$12,176	
<hr/>					
Reconciliation of Operating Income (Loss) To Net Cash Provided by (Used For) Operating Activities					
0005 Operating Income (Loss) per REP	(855,616)			(855,616)	
Adjustments					
0051 Depreciation and Net Amortization	111,880			111,880	
0052 Provision for Uncollectible Accounts					
0053 Other Adjustments	133,062			133,062	
Effect of Changes in Assets, Liabilities, Deferred Outflows and Deferred Inflows					
0054 (Inc) Dec In Accounts Receivable (0120-0150)	8,604			8,604	
0055 Advances to Other Funds (0160)					
0056 (Inc) Dec in Inventories (0170)					
0057 (Inc) Dec in Prepaid Expenses (0180)					
0058 (Inc) Dec in Other Current or Noncurrent Assets	7,740			7,740	
0064 Deferred Outflows (0910)					
0059 Inc (Dec) in Accounts Payable (0400-0450)	(4,548)			(4,548)	
0060 Inc (Dec) in Accrued Salaries/Benefits (0461)					
0065 Inc (Dec) in Net Pension Liabilities (0570)					
0066 Inc (Dec) in Other Postemp Benefit Oblig (0560)					
0061 Inc (Dec) in Payroll Deductions/Withholding (0462)					
0062 Inc (Dec) in Unearned Revenue (0480)	(19,781)			(19,781)	
0063 Inc (Dec) in Other Current or Noncurrent Liabilities					
0067 Deferred Inflows (0950)					
Total Adjustments	\$236,957			\$236,957	
Cash Provided By (Used for) Total	(\$618,659)			(\$618,659)	

COMBINED STATEMENT OF CASH FLOWS
SCHEDULE OF NONCASH INVESTING, CAPITAL, AND FINANCING ACTIVITIES

Explanation of Transaction and Balance Sheet Effect	Amount
Total	

LEA : 124159002 West Chester Area SD

Printed 2/3/2020 3:26:53 PM

Amounts Expressed in Whole Dollars

Private Purpose Trust
(71)

Investment Trust
(72)

Pension Trust
(73)

Activity
(81)

Assets And Deferred Outflows Of Resources

Assets	
0100 Cash and Cash Equivalents	485,980
0110 Investments	
0130 Due From Other Funds	
0147 Due from Component Unit	
0150 Other Receivables	
0170 Inventories	
0180 Prepaid Expenses (Expenditures)	
0190 Other Current Assets	
0220 Buildings and Building Improvements (Net)	
0230 Machinery, Equipment and Furniture (Net)	
Total Assets	\$485,980
0910 Deferred Outflows of Resources	
Total Assets And Deferred Outflows Of Resources	\$485,980

LEA : 124159002 West Chester Area SD

Printed 2/3/2020 3:26:53 PM

Amounts Expressed in Whole Dollars

	<u>Other Agency</u> <u>(89)</u>	<u>Discrete Component Units</u> <u>(98)</u>	<u>Discrete Component Units</u> <u>(99)</u>	<u>Total Fiduciary Funds</u>
Assets And Deferred Outflows Of Resources				
Assets				
0100 Cash and Cash Equivalents		32,231		518,211
0110 Investments				
0130 Due From Other Funds				
0147 Due from Component Unit				
0150 Other Receivables		11,734		11,734
0170 Inventories				
0180 Prepaid Expenses (Expenditures)				
0190 Other Current Assets				
0220 Buildings and Building Improvements (Net)				
0230 Machinery, Equipment and Furniture (Net)				
Total Assets		\$43,965		\$529,945
0910 Deferred Outflows of Resources				
Total Assets And Deferred Outflows Of Resources		\$43,965		\$529,945

LEA : 124159002 West Chester Area SD

Printed 2/3/2020 3:26:53 PM

Amounts Expressed in Whole Dollars	<u>Private Purpose Trust</u> (71)	<u>Investment Trust</u> (72)	<u>Pension Trust</u> (73)	<u>Activity</u> (81)
Liabilities, Deferred Inflows Of Resources And Net Position				
Liabilities				
0400 Due to Other Funds				
0411 Due to Other Governments				
0412 Due to Primary Government				
0413 Due to Component Unit				
0420 Accounts Payable				
0430 Contracts Payable				
0450 Short-Term Payables				
0461 Accrued Salaries and Benefits				
0462 Payroll Deductions and Withholding				
0480 Unearned Revenues				
0490 Other Current Liabilities		13,733		
Total Liabilities		\$13,733		
0950 Deferred Inflows of Resources				
Net Position				
0791 Net Investment in Capital Assets				
0009 Restricted Net Position (0792 – 0798)		472,247		
0799 Unrestricted Net Position				
Total Net Position		\$472,247		
Total Liabilities, Deferred Inflows Of Resources And Net Position		\$485,980		

LEA : 124159002 West Chester Area SD

Printed 2/3/2020 3:26:53 PM

Amounts Expressed in Whole Dollars

<u>Other Agency</u> (89)	<u>Discrete Component Units</u> (98)	<u>Discrete Component Units</u> (99)	<u>Total Fiduciary Funds</u>
-----------------------------	---	---	------------------------------

Liabilities, Deferred Inflows Of Resources And Net Position

Liabilities

0400 Due to Other Funds			
0411 Due to Other Governments			
0412 Due to Primary Government			
0413 Due to Component Unit			
0420 Accounts Payable			
0430 Contracts Payable			
0450 Short-Term Payables			
0461 Accrued Salaries and Benefits			
0462 Payroll Deductions and Withholding			
0480 Unearned Revenues			
0490 Other Current Liabilities	43,965		57,698
Total Liabilities	\$43,965		\$57,698

0950 Deferred Inflows of Resources

Net Position

0791 Net Investment in Capital Assets			
0009 Restricted Net Position (0792 – 0798)			472,247
0799 Unrestricted Net Position			
Total Net Position			\$472,247

Total Liabilities, Deferred Inflows Of Resources And Net Position	\$43,965		\$529,945
--	-----------------	--	------------------

Amounts Expressed in Whole Dollars	<u>Private Purpose Trust</u> <u>(71)</u>	<u>Investment Trust</u> <u>(72)</u>	<u>Pension Trust</u> <u>(73)</u>	<u>Discrete Component</u> <u>Units</u> <u>(98)</u>	<u>Discrete Component</u> <u>Units</u> <u>(99)</u>	<u>Total Fiduciary</u> <u>Funds</u>
Additions						
0091 Gifts and Contributions	603,915					603,915
0092 Other Additions						
Deductions						
0093 Scholarships Awarded						
0094 Other Deductions	575,569					575,569
Change In Net Position	\$28,346					\$28,346
0006 Net Position – Beginning of Fiscal Year	443,901					443,901
0007 Net Position Held in Trust for Pension Benefits						
Net Position - End of Fiscal Year	\$472,247					\$472,247

	<u>Revenue Reported In Current Year</u>	<u>Current Year Tax Accrual</u>	<u>Prior Year Tax Accrual</u>	<u>Taxes Collected In Current Year</u>
<u>Revenue from Local Sources</u>				
6111 Current Real Estate Taxes	169,592,595.06			169,592,595.06
6112 Interim Real Estate Taxes	1,091,953.52			1,091,953.52
6113 Public Utility Realty Taxes	192,821.01			192,821.01
6151 Current Act 511 Earned Income Taxes	21,510,397.14	681,382.98	661,370.14	21,490,384.30
6153 Current Act 511 Real Estate Transfer Taxes	4,420,739.01	423,662.86	473,885.20	4,470,961.35
6411 Delinquent Real Estate Taxes	2,477,180.77	211,238.03	450,565.04	2,716,507.78
6500 Earnings on Investments	2,656,955.40			
6700 Revenues from LEA Activities	227,350.00			
6831 Federal Revenue Received from Other Pennsylvania Public LEAs	4,500.00			
6832 Federal IDEA Revenue Received as Pass Through	1,326,870.00			
6910 Rentals	444,123.75			
6920 Contributions and Donations from Private Sources	18,270.88			
6942 Summer School Tuition	53,974.49			
6944 Receipts from Other LEAs in Pennsylvania - Education	55,399.56			
6949 Other Tuition from Patrons	18,793.06			
6991 Refunds of a Prior Year Expenditure	999.11			
6992 Energy Efficiency Revenues and Incentives	353,765.00			
6999 Other Revenues Not Specified Above	58,463.70			
TOTAL Revenue from Local Sources	\$204,505,151.46	\$1,316,283.87	\$1,585,820.38	\$199,555,223.02

**Revenue Reported
In Current Year**

Revenue from State Sources

7110 Basic Education Funding	8,421,638.14		
7160 Tuition for Orphans Subsidy	228,320.32		
7271 Special Education funds for School-Aged Pupils	6,128,947.02		
7299 Program Revenues Not Listed Previously in the 7200 Series	2,780.68		
7311 Pupil Transportation Subsidy	2,039,192.15		
7312 Nonpublic and Charter School Pupil Transportation Subsidy	1,274,735.00		
7320 Rental and Sinking Fund Payments / Building Reimbursement Subsidy	1,163,834.02		
7330 Health Services (Medical, Dental, Nurse, Act 25)	255,330.28		
7340 State Property Tax Reduction Allocation	3,468,140.90		
7505 Ready to Learn Block Grant	399,095.00		
7599 Other State Revenue Not Listed Elsewhere in the 7000 Series	54,160.59		
7810 State Share of Social Security and Medicare Taxes	3,415,379.88		
7820 State Share of Retirement Contributions	15,827,583.18		
TOTAL Revenue from State Sources	\$42,679,137.16		

**Revenue Reported
In Current Year**

Revenue from Federal Sources

8514 NCLB, Title I - Improving the Academic Achievement of the Disadvantaged	704,467.00			
8515 NCLB, Title II - Preparing, Training and Recruiting High Quality Teachers and Principals	207,850.64			
8516 NCLB, Title III - Language Instruction for Limited English Proficient and Immigrant Students	112,352.83			
8517 NCLB, Title IV - 21St Century Schools	61,432.71			
8810 School-Based Access Medicaid Reimbursement Program (SBAP) Reimbursements (Access)	1,217,558.48			
8820 Medical Assistance Reimbursement for Administrative Claiming (Quarterly) Program	33,689.54			
TOTAL Revenue from Federal Sources	\$2,337,351.20			
TOTAL FROM ALL SOURCES	\$249,521,639.82	\$1,316,283.87	\$1,585,820.38	\$199,555,223.02

Revenue from Local Sources	204,505,151.46
Revenue from State Sources	42,679,137.16
Revenue from Federal Sources	2,337,351.20
Other Financing Sources	
TOTAL FROM ALL SOURCES	\$249,521,639.82

General Fund (10)

	<u>Total</u>
1000 Instruction	
100 Personnel Services – Salaries	
100 Personnel Services – Salaries	66,275,919.71
Total Personnel Services – Salaries	\$66,275,919.71
200 Personnel Services – Employee Benefits	
210 Group Insurance – Contracted Provider	181,156.97
220 Social Security Contributions	4,805,679.86
230 PSERS Retirement Contributions	22,156,222.46
250 Unemployment Compensation	33,442.92
260 Workers' Compensation	520,673.01
270 Group Insurance – Self-Insurance	12,742,454.81
299 All Other Employee Benefits	209,932.56
Total Personnel Services – Employee Benefits	\$40,649,562.59
300 Purchased Professional and Technical Services	
310 Official / Administrative Services	267,696.00
322 Professional Educational Services – Ius	5,202,993.51
323 Professional Educational Services – Other Educational Agencies	2,696,368.19
329 Professional Educational Services – Other	6,360,906.21
330 Other Professional Services	1,167,099.87
340 Technical Services	36,492.00
390 Other Purchased Professional and Technical Services	2,711.82
Total Purchased Professional and Technical Services	\$15,734,267.60
400 Purchased Property Services	
430 Repairs and Maintenance Services	83,228.75
440 Rentals	248,693.84
Total Purchased Property Services	\$331,922.59
500 Other Purchased Services	
510 Student Transportation Services	38,417.56
530 Communications	57,578.18
550 Printing and Binding	23,107.13
561 Tuition To Other School Districts Within the State	236,209.67
562 Tuition To Pennsylvania Charter Schools	8,277,896.33
563 Tuition To Nonpublic Schools	765,146.06
564 Tuition To Career and Technology Centers	2,738,785.34
567 Tuition To Approved Private Schools (APS) and PA Chartered Schools for the Deaf and Blind	2,528,262.28
568 Tuition To Private Residential Rehabilitative Institutions (PRRI) [In-State] and Detention Centers	64,784.72
569 Tuition – Other	890,988.22
580 Travel	77,554.20
594 IU Payment By Withholding for Institutionalized Children's Programs – Special Classes	2,784.06
Total Other Purchased Services	\$15,701,513.75
600 Supplies	
610 General Supplies	1,324,017.62
630 Food	14,370.44
640 Books and Periodicals	1,082,617.47
650 Supplies & Fees – Technology Related	901,314.86

General Fund (10)

1000 Instruction	<u>Total</u>
Total Supplies	\$3,322,320.39
700 Property	
752 Capital Equipment – Original and Additional	5,500.00
756 Capitalized Technology Equipment – Original	25,000.00
Total Property	\$30,500.00
800 Other Objects	
810 Dues and Fees	42,004.72
Total Other Objects	\$42,004.72
Total 1000 Instruction	\$142,088,011.35

LEA : 124159002 West Chester Area SD

Printed 2/3/2020 3:27:11 PM

Page - 3 of 28

General Fund (10)**1100 Regular Programs – Elementary / Secondary**

	<u>Elementary</u>	<u>Secondary</u>	<u>Federal</u>	<u>Total</u>
100 Personnel Services – Salaries				
100 Personnel Services – Salaries	26,059,577.81	25,788,663.12	433,258.32	52,281,499.25
Total Personnel Services – Salaries	\$26,059,577.81	\$25,788,663.12	\$433,258.32	\$52,281,499.25
200 Personnel Services – Employee Benefits				
210 Group Insurance – Contracted Provider	65,592.81	72,173.41	747.54	138,513.76
220 Social Security Contributions	1,886,850.27	1,879,408.83	33,759.39	3,800,018.49
230 PSERS Retirement Contributions	8,721,238.70	8,628,380.22	147,712.97	17,497,331.89
250 Unemployment Compensation	13,275.43	13,155.39		26,430.82
260 Workers' Compensation	206,685.49	204,816.58		411,502.07
270 Group Insurance – Self-Insurance	5,101,880.86	4,501,900.97	101,742.36	9,705,524.19
299 All Other Employee Benefits	83,334.47	82,580.92		165,915.39
Total Personnel Services – Employee Benefits	\$16,078,858.03	\$15,382,416.32	\$283,962.26	\$31,745,236.61
300 Purchased Professional and Technical Services				
310 Official / Administrative Services	141,006.96	126,689.04		267,696.00
322 Professional Educational Services – Ius	120.00			120.00
323 Professional Educational Services – Other Educational Agencies	2,695.00	300.00		2,995.00
329 Professional Educational Services – Other	1,060,269.62	892,918.61	5,918.19	1,959,106.42
330 Other Professional Services	65,432.94	58,788.85	895.00	125,116.79
340 Technical Services		2,500.00		2,500.00
390 Other Purchased Professional and Technical Services	1,269.20	1,442.62		2,711.82
Total Purchased Professional and Technical Services	\$1,270,793.72	\$1,082,639.12	\$6,813.19	\$2,360,246.03
400 Purchased Property Services				
430 Repairs and Maintenance Services	34,409.96	48,818.79		83,228.75
440 Rentals	77,786.56	101,626.48		179,413.04
Total Purchased Property Services	\$112,196.52	\$150,445.27		\$262,641.79
500 Other Purchased Services				
510 Student Transportation Services	(3,507.05)	16,880.55	5,111.06	18,484.56
530 Communications	30,086.02	25,744.76		55,830.78
550 Printing and Binding	8,114.50	12,268.33		20,382.83
562 Tuition To Pennsylvania Charter Schools	5,115,876.29			5,115,876.29
580 Travel	4,562.00	30,432.03		34,994.03
Total Other Purchased Services	\$5,155,131.76	\$85,325.67	\$5,111.06	\$5,245,568.49
600 Supplies				
610 General Supplies	546,601.29	530,660.07	18,871.81	1,096,133.17
630 Food	8,978.79	3,074.70	867.39	12,920.88
640 Books and Periodicals	911,207.36	148,640.91	16,813.50	1,076,661.77
650 Supplies & Fees – Technology Related	487,931.62	399,929.92		887,861.54
Total Supplies	\$1,954,719.06	\$1,082,305.60	\$36,552.70	\$3,073,577.36
700 Property				
752 Capital Equipment – Original and Additional		5,500.00		5,500.00
756 Capitalized Technology Equipment – Original		25,000.00		25,000.00
Total Property		\$30,500.00		\$30,500.00

General Fund (10)

	<u>Elementary</u>	<u>Secondary</u>	<u>Federal</u>	<u>Total</u>
1100 Regular Programs – Elementary / Secondary				
800 <u>Other Objects</u>				
810 Dues and Fees	869.12	19,629.78		20,498.90
Total Other Objects	\$869.12	\$19,629.78		\$20,498.90
Total 1100 Regular Programs – Elementary / Secondary	\$50,632,146.02	\$43,621,924.88	\$765,697.53	\$95,019,768.43

General Fund (10)

1110 Regular Programs

	<u>Elementary</u>	<u>Secondary</u>	<u>Federal</u>	<u>Total</u>
100 Personnel Services – Salaries				
100 Personnel Services – Salaries	26,059,577.81	25,788,663.12		51,848,240.93
Total Personnel Services – Salaries	\$26,059,577.81	\$25,788,663.12		\$51,848,240.93
200 Personnel Services – Employee Benefits				
210 Group Insurance – Contracted Provider	65,592.81	72,173.41		137,766.22
220 Social Security Contributions	1,886,850.27	1,879,408.83		3,766,259.10
230 PSERS Retirement Contributions	8,721,238.70	8,628,380.22		17,349,618.92
250 Unemployment Compensation	13,275.43	13,155.39		26,430.82
260 Workers' Compensation	206,685.49	204,816.58		411,502.07
270 Group Insurance – Self-Insurance	5,101,880.86	4,501,900.97		9,603,781.83
299 All Other Employee Benefits	83,334.47	82,580.92		165,915.39
Total Personnel Services – Employee Benefits	\$16,078,858.03	\$15,382,416.32		\$31,461,274.35
300 Purchased Professional and Technical Services				
310 Official / Administrative Services	141,006.96	126,689.04		267,696.00
322 Professional Educational Services – Ius	120.00			120.00
323 Professional Educational Services – Other Educational Agencies	2,695.00	300.00		2,995.00
329 Professional Educational Services – Other	1,060,269.62	892,918.61		1,953,188.23
330 Other Professional Services	65,432.94	58,788.85		124,221.79
340 Technical Services		2,500.00		2,500.00
390 Other Purchased Professional and Technical Services	1,269.20	1,442.62		2,711.82
Total Purchased Professional and Technical Services	\$1,270,793.72	\$1,082,639.12		\$2,353,432.84
400 Purchased Property Services				
430 Repairs and Maintenance Services	34,409.96	48,818.79		83,228.75
440 Rentals	77,786.56	101,626.48		179,413.04
Total Purchased Property Services	\$112,196.52	\$150,445.27		\$262,641.79
500 Other Purchased Services				
510 Student Transportation Services	(3,507.05)	16,880.55		13,373.50
530 Communications	30,086.02	25,744.76		55,830.78
550 Printing and Binding	8,114.50	12,268.33		20,382.83
562 Tuition To Pennsylvania Charter Schools	5,115,876.29			5,115,876.29
580 Travel	4,562.00	30,432.03		34,994.03
Total Other Purchased Services	\$5,155,131.76	\$85,325.67		\$5,240,457.43
600 Supplies				
610 General Supplies	546,601.29	530,660.07		1,077,261.36
630 Food	8,978.79	3,074.70		12,053.49
640 Books and Periodicals	911,207.36	148,640.91		1,059,848.27
650 Supplies & Fees – Technology Related	487,931.62	399,929.92		887,861.54
Total Supplies	\$1,954,719.06	\$1,082,305.60		\$3,037,024.66
700 Property				
752 Capital Equipment – Original and Additional		5,500.00		5,500.00
756 Capitalized Technology Equipment – Original		25,000.00		25,000.00
Total Property		\$30,500.00		\$30,500.00

General Fund (10)

1110 Regular Programs

800 Other Objects

810 Dues and Fees

Total Other Objects

Total 1110 Regular Programs

Elementary

Secondary

Federal

Total

869.12

19,629.78

20,498.90

\$869.12

\$19,629.78

\$20,498.90

\$50,632,146.02

\$43,621,924.88

\$94,254,070.90

General Fund (10)

	<u>Elementary</u>	<u>Secondary</u>	<u>Federal</u>	<u>Total</u>
1190 Federally-Funded Regular Programs				
100 Personnel Services – Salaries				
100 Personnel Services – Salaries			433,258.32	433,258.32
Total Personnel Services – Salaries			\$433,258.32	\$433,258.32
200 Personnel Services – Employee Benefits				
210 Group Insurance – Contracted Provider			747.54	747.54
220 Social Security Contributions			33,759.39	33,759.39
230 PSERS Retirement Contributions			147,712.97	147,712.97
270 Group Insurance – Self-Insurance			101,742.36	101,742.36
Total Personnel Services – Employee Benefits			\$283,962.26	\$283,962.26
300 Purchased Professional and Technical Services				
329 Professional Educational Services – Other			5,918.19	5,918.19
330 Other Professional Services			895.00	895.00
Total Purchased Professional and Technical Services			\$6,813.19	\$6,813.19
500 Other Purchased Services				
510 Student Transportation Services			5,111.06	5,111.06
Total Other Purchased Services			\$5,111.06	\$5,111.06
600 Supplies				
610 General Supplies			18,871.81	18,871.81
630 Food			867.39	867.39
640 Books and Periodicals			16,813.50	16,813.50
Total Supplies			\$36,552.70	\$36,552.70
Total 1190 Federally-Funded Regular Programs			\$765,697.53	\$765,697.53

General Fund (10)

1200 Special Programs – Elementary / Secondary

	<u>Elementary</u>	<u>Secondary</u>	<u>Federal</u>	<u>Total</u>
100 Personnel Services – Salaries				
100 Personnel Services – Salaries	6,106,889.16	5,612,650.18	45,226.08	11,764,765.42
Total Personnel Services – Salaries	\$6,106,889.16	\$5,612,650.18	\$45,226.08	\$11,764,765.42
200 Personnel Services – Employee Benefits				
210 Group Insurance – Contracted Provider	16,653.78	17,904.81	59.88	34,618.47
220 Social Security Contributions	435,237.74	405,498.24	3,183.99	843,919.97
230 PSERS Retirement Contributions	2,027,891.88	1,870,579.63	15,123.12	3,913,594.63
250 Unemployment Compensation	3,069.38	2,808.65		5,878.03
260 Workers' Compensation	47,786.95	43,727.84		91,514.79
270 Group Insurance – Self-Insurance	1,444,623.25	1,169,193.24	13,518.96	2,627,335.45
299 All Other Employee Benefits	19,267.45	17,630.84		36,898.29
Total Personnel Services – Employee Benefits	\$3,994,530.43	\$3,527,343.25	\$31,885.95	\$7,553,759.63
300 Purchased Professional and Technical Services				
322 Professional Educational Services – Ius	847,913.68	2,935,891.96	1,331,370.00	5,115,175.64
323 Professional Educational Services – Other Educational Agencies	828,382.46	1,304,516.93		2,132,899.39
329 Professional Educational Services – Other	1,766,482.50	1,587,113.06	1,043,118.66	4,396,714.22
330 Other Professional Services	523,384.55	491,239.24	27,359.29	1,041,983.08
340 Technical Services	17,905.06	16,086.94		33,992.00
Total Purchased Professional and Technical Services	\$3,984,068.25	\$6,334,848.13	\$2,401,847.95	\$12,720,764.33
400 Purchased Property Services				
440 Rentals	2,147.45	1,929.39		4,076.84
Total Purchased Property Services	\$2,147.45	\$1,929.39		\$4,076.84
500 Other Purchased Services				
510 Student Transportation Services	7,824.45	9,144.59		16,969.04
530 Communications	781.90	702.48		1,484.38
550 Printing and Binding	1,435.01	1,289.29		2,724.30
561 Tuition To Other School Districts Within the State	3,207.67	189,551.40		192,759.07
562 Tuition To Pennsylvania Charter Schools	3,162,020.04			3,162,020.04
563 Tuition To Nonpublic Schools		756,593.06		756,593.06
567 Tuition To Approved Private Schools (APS) and PA Chartered Schools for the Deaf and Blind	1,331,744.05	1,196,518.23		2,528,262.28
568 Tuition To Private Residential Rehabilitative Institutions (PRRI) [In-State] and Detention Centers	34,124.89	30,659.83		64,784.72
569 Tuition – Other	466,893.91	419,485.31		886,379.22
580 Travel	9,882.75	8,963.11	6,588.66	25,434.52
594 IU Payment By Withholding for Institutionalized Children's Programs – Special Classes	1,466.49	1,317.57		2,784.06
Total Other Purchased Services	\$5,019,381.16	\$2,614,224.87	\$6,588.66	\$7,640,194.69
600 Supplies				
610 General Supplies	24,161.16	34,462.33	75,081.08	133,704.57
630 Food			944.30	944.30
640 Books and Periodicals	131.16	1,870.28		2,001.44
650 Supplies & Fees – Technology Related	2,673.75	2,402.25		5,076.00
Total Supplies	\$26,966.07	\$38,734.86	\$76,025.38	\$141,726.31
800 Other Objects				

General Fund (10)

	<u>Elementary</u>	<u>Secondary</u>	<u>Federal</u>	<u>Total</u>
1200 Special Programs – Elementary / Secondary				
800 <u>Other Objects</u>				
810 Dues and Fees	4,139.89	4,198.93	11,044.00	19,382.82
Total Other Objects	\$4,139.89	\$4,198.93	\$11,044.00	\$19,382.82
Total 1200 Special Programs – Elementary / Secondary	\$19,138,122.41	\$18,133,929.61	\$2,572,618.02	\$39,844,670.04

General Fund (10)

1210 Life Skills Support

	<u>Elementary</u>	<u>Secondary</u>	<u>Federal</u>	<u>Total</u>
100 Personnel Services – Salaries				
100 Personnel Services – Salaries	327,430.83	177,547.77		504,978.60
Total Personnel Services – Salaries	\$327,430.83	\$177,547.77		\$504,978.60
200 Personnel Services – Employee Benefits				
210 Group Insurance – Contracted Provider	1,042.88	374.79		1,417.67
220 Social Security Contributions	22,333.74	12,720.68		35,054.42
230 PSERS Retirement Contributions	109,439.61	59,342.71		168,782.32
250 Unemployment Compensation	169.90	92.22		262.12
260 Workers' Compensation	2,645.24	1,435.87		4,081.11
270 Group Insurance – Self-Insurance	99,463.74	44,061.79		143,525.53
299 All Other Employee Benefits	1,066.55	578.93		1,645.48
Total Personnel Services – Employee Benefits	\$236,161.66	\$118,606.99		\$354,768.65
300 Purchased Professional and Technical Services				
322 Professional Educational Services – lus		198,348.91	629,216.43	827,565.34
Total Purchased Professional and Technical Services		\$198,348.91	\$629,216.43	\$827,565.34
500 Other Purchased Services				
510 Student Transportation Services	1,124.99	2,505.83		3,630.82
Total Other Purchased Services	\$1,124.99	\$2,505.83		\$3,630.82
600 Supplies				
610 General Supplies			3,875.40	3,875.40
Total Supplies			\$3,875.40	\$3,875.40
Total 1210 Life Skills Support	\$564,717.48	\$497,009.50	\$633,091.83	\$1,694,818.81

General Fund (10)

	<u>Elementary</u>	<u>Secondary</u>	<u>Federal</u>	<u>Total</u>
1220 Sensory Support				
100 Personnel Services – Salaries				
100 Personnel Services – Salaries	523,675.91	470,501.63		994,177.54
Total Personnel Services – Salaries	\$523,675.91	\$470,501.63		\$994,177.54
200 Personnel Services – Employee Benefits				
210 Group Insurance – Contracted Provider	1,764.53	1,585.34		3,349.87
220 Social Security Contributions	38,754.40	34,819.25		73,573.65
230 PSERS Retirement Contributions	174,329.11	156,627.65		330,956.76
250 Unemployment Compensation	269.93	242.52		512.45
260 Workers' Compensation	4,202.53	3,775.79		7,978.32
270 Group Insurance – Self-Insurance	77,526.47	69,654.37		147,180.84
299 All Other Employee Benefits	1,694.44	1,522.38		3,216.82
Total Personnel Services – Employee Benefits	\$298,541.41	\$268,227.30		\$566,768.71
300 Purchased Professional and Technical Services				
322 Professional Educational Services – Ius	63,140.36	56,729.05	693,469.84	813,339.25
330 Other Professional Services	174,038.01	156,366.12		330,404.13
Total Purchased Professional and Technical Services	\$237,178.37	\$213,095.17	\$693,469.84	\$1,143,743.38
500 Other Purchased Services				
580 Travel	41.03	36.86	144.32	222.21
Total Other Purchased Services	\$41.03	\$36.86	\$144.32	\$222.21
600 Supplies				
610 General Supplies			6,097.20	6,097.20
Total Supplies			\$6,097.20	\$6,097.20
800 Other Objects				
810 Dues and Fees			1,157.00	1,157.00
Total Other Objects			\$1,157.00	\$1,157.00
Total 1220 Sensory Support	\$1,059,436.72	\$951,860.96	\$700,868.36	\$2,712,166.04

General Fund (10)

1230 Emotional Support

	<u>Elementary</u>	<u>Secondary</u>	<u>Federal</u>	<u>Total</u>
100 Personnel Services – Salaries				
100 Personnel Services – Salaries	823,533.24	674,681.28		1,498,214.52
Total Personnel Services – Salaries	\$823,533.24	\$674,681.28		\$1,498,214.52
200 Personnel Services – Employee Benefits				
210 Group Insurance – Contracted Provider	1,450.09	1,170.88		2,620.97
220 Social Security Contributions	56,902.92	48,345.32		105,248.24
230 PSERS Retirement Contributions	275,289.09	225,504.82		500,793.91
250 Unemployment Compensation	427.60	350.22		777.82
260 Workers' Compensation	6,657.39	5,452.50		12,109.89
270 Group Insurance – Self-Insurance	263,657.18	169,254.52		432,911.70
299 All Other Employee Benefits	2,684.24	2,198.45		4,882.69
Total Personnel Services – Employee Benefits	\$607,068.51	\$452,276.71		\$1,059,345.22
300 Purchased Professional and Technical Services				
322 Professional Educational Services – Ius		1,771,406.50	8,683.73	1,780,090.23
323 Professional Educational Services – Other Educational Agencies		560,248.80		560,248.80
Total Purchased Professional and Technical Services		\$2,331,655.30	\$8,683.73	\$2,340,339.03
500 Other Purchased Services				
510 Student Transportation Services	1,042.72	2,012.81		3,055.53
561 Tuition To Other School Districts Within the State	3,207.67	189,551.40		192,759.07
563 Tuition To Nonpublic Schools		49,314.06		49,314.06
Total Other Purchased Services	\$4,250.39	\$240,878.27		\$245,128.66
600 Supplies				
610 General Supplies		3,737.70	12,202.29	15,939.99
640 Books and Periodicals		74.14		74.14
Total Supplies		\$3,811.84	\$12,202.29	\$16,014.13
Total 1230 Emotional Support	\$1,434,852.14	\$3,703,303.40	\$20,886.02	\$5,159,041.56

General Fund (10)

1240 Academic Support

	<u>Elementary</u>	<u>Secondary</u>	<u>Federal</u>	<u>Total</u>
100 Personnel Services – Salaries				
100 Personnel Services – Salaries	3,637,185.58	3,454,083.96		7,091,269.54
Total Personnel Services – Salaries	\$3,637,185.58	\$3,454,083.96		\$7,091,269.54
200 Personnel Services – Employee Benefits				
210 Group Insurance – Contracted Provider	8,981.56	10,911.53		19,893.09
220 Social Security Contributions	259,314.46	248,464.46		507,778.92
230 PSERS Retirement Contributions	1,209,467.83	1,155,463.63		2,364,931.46
250 Unemployment Compensation	1,888.47	1,793.14		3,681.61
260 Workers' Compensation	29,401.23	27,917.23		57,318.46
270 Group Insurance – Self-Insurance	897,755.91	770,259.68		1,668,015.59
299 All Other Employee Benefits	11,854.40	11,256.07		23,110.47
Total Personnel Services – Employee Benefits	\$2,418,663.86	\$2,226,065.74		\$4,644,729.60
300 Purchased Professional and Technical Services				
322 Professional Educational Services – Ius		479,586.22		479,586.22
329 Professional Educational Services – Other	3,109.02	2,793.30		5,902.32
330 Other Professional Services		20,999.39		20,999.39
340 Technical Services	3,581.86	3,218.14		6,800.00
Total Purchased Professional and Technical Services	\$6,690.88	\$506,597.05		\$513,287.93
500 Other Purchased Services				
510 Student Transportation Services	1,706.59	1,424.17		3,130.76
530 Communications	127.23	114.30		241.53
563 Tuition To Nonpublic Schools		707,279.00		707,279.00
580 Travel	1,933.35	1,761.03		3,694.38
Total Other Purchased Services	\$3,767.17	\$710,578.50		\$714,345.67
600 Supplies				
610 General Supplies	12,435.66	19,905.92	34,386.91	66,728.49
640 Books and Periodicals	131.16	1,796.14		1,927.30
Total Supplies	\$12,566.82	\$21,702.06	\$34,386.91	\$68,655.79
800 Other Objects				
810 Dues and Fees	3,765.89	3,862.93		7,628.82
Total Other Objects	\$3,765.89	\$3,862.93		\$7,628.82
Total 1240 Academic Support	\$6,082,640.20	\$6,922,890.24	\$34,386.91	\$13,039,917.35

General Fund (10)

	<u>Elementary</u>	<u>Secondary</u>	<u>Federal</u>	<u>Total</u>
1241 Learning Support – Public				
100 Personnel Services – Salaries				
100 Personnel Services – Salaries	2,923,553.17	2,886,533.40		5,810,086.57
Total Personnel Services – Salaries	\$2,923,553.17	\$2,886,533.40		\$5,810,086.57
200 Personnel Services – Employee Benefits				
210 Group Insurance – Contracted Provider	6,892.00	7,498.11		14,390.11
220 Social Security Contributions	207,218.29	206,523.88		413,742.17
230 PSERS Retirement Contributions	975,592.85	965,767.69		1,941,360.54
250 Unemployment Compensation	1,518.02	1,498.56		3,016.58
260 Workers' Compensation	23,633.96	23,330.98		46,964.94
270 Group Insurance – Self-Insurance	767,448.12	684,347.75		1,451,795.87
299 All Other Employee Benefits	9,529.08	9,406.93		18,936.01
Total Personnel Services – Employee Benefits	\$1,991,832.32	\$1,898,373.90		\$3,890,206.22
300 Purchased Professional and Technical Services				
322 Professional Educational Services – lus		479,586.22		479,586.22
330 Other Professional Services		20,999.39		20,999.39
Total Purchased Professional and Technical Services		\$500,585.61		\$500,585.61
500 Other Purchased Services				
510 Student Transportation Services		197.44		197.44
563 Tuition To Nonpublic Schools		707,279.00		707,279.00
Total Other Purchased Services		\$707,476.44		\$707,476.44
600 Supplies				
610 General Supplies	1,457.21	11,503.74	34,386.91	47,347.86
640 Books and Periodicals		1,154.63		1,154.63
Total Supplies	\$1,457.21	\$12,658.37	\$34,386.91	\$48,502.49
800 Other Objects				
810 Dues and Fees	2,240.00	2,239.00		4,479.00
Total Other Objects	\$2,240.00	\$2,239.00		\$4,479.00
Total 1241 Learning Support – Public	\$4,919,082.70	\$6,007,866.72	\$34,386.91	\$10,961,336.33

General Fund (10)

1243 Gifted Support

	<u>Elementary</u>	<u>Secondary</u>	<u>Federal</u>	<u>Total</u>
100 Personnel Services – Salaries				
100 Personnel Services – Salaries	713,632.41	567,550.56		1,281,182.97
Total Personnel Services – Salaries	\$713,632.41	\$567,550.56		\$1,281,182.97
200 Personnel Services – Employee Benefits				
210 Group Insurance – Contracted Provider	2,089.56	3,413.42		5,502.98
220 Social Security Contributions	52,096.17	41,940.58		94,036.75
230 PSERS Retirement Contributions	233,874.98	189,695.94		423,570.92
250 Unemployment Compensation	370.45	294.58		665.03
260 Workers' Compensation	5,767.27	4,586.25		10,353.52
270 Group Insurance – Self-Insurance	130,307.79	85,911.93		216,219.72
299 All Other Employee Benefits	2,325.32	1,849.14		4,174.46
Total Personnel Services – Employee Benefits	\$426,831.54	\$327,691.84		\$754,523.38
300 Purchased Professional and Technical Services				
329 Professional Educational Services – Other	3,109.02	2,793.30		5,902.32
340 Technical Services	3,581.86	3,218.14		6,800.00
Total Purchased Professional and Technical Services	\$6,690.88	\$6,011.44		\$12,702.32
500 Other Purchased Services				
510 Student Transportation Services	1,706.59	1,226.73		2,933.32
530 Communications	127.23	114.30		241.53
580 Travel	1,933.35	1,761.03		3,694.38
Total Other Purchased Services	\$3,767.17	\$3,102.06		\$6,869.23
600 Supplies				
610 General Supplies	10,978.45	8,402.18		19,380.63
640 Books and Periodicals	131.16	641.51		772.67
Total Supplies	\$11,109.61	\$9,043.69		\$20,153.30
800 Other Objects				
810 Dues and Fees	1,525.89	1,623.93		3,149.82
Total Other Objects	\$1,525.89	\$1,623.93		\$3,149.82
Total 1243 Gifted Support	\$1,163,557.50	\$915,023.52		\$2,078,581.02

General Fund (10)

1260 Physical Support

300 Purchased Professional and Technical Services

	<u>Elementary</u>	<u>Secondary</u>	<u>Federal</u>	<u>Total</u>
322 Professional Educational Services – Ius	82,611.46	74,223.05		156,834.51
323 Professional Educational Services – Other Educational Agencies	470,533.29	422,755.14		893,288.43
Total Purchased Professional and Technical Services	\$553,144.75	\$496,978.19		\$1,050,122.94

500 Other Purchased Services

580 Travel	3.06	2.74		5.80
Total Other Purchased Services	\$3.06	\$2.74		\$5.80

600 Supplies

610 General Supplies	10,179.39	9,145.76		19,325.15
Total Supplies	\$10,179.39	\$9,145.76		\$19,325.15
Total 1260 Physical Support	\$563,327.20	\$506,126.69		\$1,069,453.89

General Fund (10)

	<u>Elementary</u>	<u>Secondary</u>	<u>Federal</u>	<u>Total</u>
1270 Multi-Handicapped Support				
100 Personnel Services – Salaries				
100 Personnel Services – Salaries	115,700.00			115,700.00
Total Personnel Services – Salaries	\$115,700.00			\$115,700.00
200 Personnel Services – Employee Benefits				
210 Group Insurance – Contracted Provider	187.66			187.66
220 Social Security Contributions	7,648.13			7,648.13
230 PSERS Retirement Contributions	38,671.26			38,671.26
250 Unemployment Compensation	60.10			60.10
260 Workers' Compensation	935.76			935.76
270 Group Insurance – Self-Insurance	35,282.12			35,282.12
299 All Other Employee Benefits	377.29			377.29
Total Personnel Services – Employee Benefits	\$83,162.32			\$83,162.32
300 Purchased Professional and Technical Services				
322 Professional Educational Services – lus		284,555.84		284,555.84
Total Purchased Professional and Technical Services		\$284,555.84		\$284,555.84
500 Other Purchased Services				
510 Student Transportation Services	1,375.00	888.13		2,263.13
580 Travel		59.88		59.88
Total Other Purchased Services	\$1,375.00	\$948.01		\$2,323.01
600 Supplies				
610 General Supplies		283.83	6,112.53	6,396.36
Total Supplies		\$283.83	\$6,112.53	\$6,396.36
Total 1270 Multi-Handicapped Support	\$200,237.32	\$285,787.68	\$6,112.53	\$492,137.53

General Fund (10)

1280 Early Intervention Support

300 Purchased Professional and Technical Services

322 Professional Educational Services – lus

Total Purchased Professional and Technical Services

Total 1280 Early Intervention Support

Elementary

Secondary

Federal

Total

262,772.45

262,772.45

\$262,772.45

\$262,772.45

\$262,772.45

\$262,772.45

General Fund (10)

1290 Special Programs - Other Support

	<u>Elementary</u>	<u>Secondary</u>	<u>Federal</u>	<u>Total</u>
100 Personnel Services – Salaries				
100 Personnel Services – Salaries	679,363.60	835,835.54	45,226.08	1,560,425.22
Total Personnel Services – Salaries	\$679,363.60	\$835,835.54	\$45,226.08	\$1,560,425.22
200 Personnel Services – Employee Benefits				
210 Group Insurance – Contracted Provider	3,227.06	3,862.27	59.88	7,149.21
220 Social Security Contributions	50,284.09	61,148.53	3,183.99	114,616.61
230 PSERS Retirement Contributions	220,694.98	273,640.82	15,123.12	509,458.92
250 Unemployment Compensation	253.38	330.55		583.93
260 Workers' Compensation	3,944.80	5,146.45		9,091.25
270 Group Insurance – Self-Insurance	70,937.83	115,962.88	13,518.96	200,419.67
299 All Other Employee Benefits	1,590.53	2,075.01		3,665.54
Total Personnel Services – Employee Benefits	\$350,932.67	\$462,166.51	\$31,885.95	\$844,985.13
300 Purchased Professional and Technical Services				
322 Professional Educational Services – Ius	439,389.41	71,042.39		510,431.80
323 Professional Educational Services – Other Educational Agencies	357,849.17	321,512.99		679,362.16
329 Professional Educational Services – Other	1,763,373.48	1,584,319.76	1,043,118.66	4,390,811.90
330 Other Professional Services	349,346.54	313,873.73	27,359.29	690,579.56
340 Technical Services	14,323.20	12,868.80		27,192.00
Total Purchased Professional and Technical Services	\$2,924,281.80	\$2,303,617.67	\$1,070,477.95	\$6,298,377.42
400 Purchased Property Services				
440 Rentals	2,147.45	1,929.39		4,076.84
Total Purchased Property Services	\$2,147.45	\$1,929.39		\$4,076.84
500 Other Purchased Services				
510 Student Transportation Services	2,575.15	2,313.65		4,888.80
530 Communications	654.67	588.18		1,242.85
550 Printing and Binding	1,435.01	1,289.29		2,724.30
562 Tuition To Pennsylvania Charter Schools	3,162,020.04			3,162,020.04
567 Tuition To Approved Private Schools (APS) and PA Chartered Schools for the Deaf and Blind	1,331,744.05	1,196,518.23		2,528,262.28
568 Tuition To Private Residential Rehabilitative Institutions (PRRI) [In-State] and Detention Centers	34,124.89	30,659.83		64,784.72
569 Tuition – Other	466,893.91	419,485.31		886,379.22
580 Travel	7,905.31	7,102.60	6,444.34	21,452.25
594 IU Payment By Withholding for Institutionalized Children's Programs – Special Classes	1,466.49	1,317.57		2,784.06
Total Other Purchased Services	\$5,008,819.52	\$1,659,274.66	\$6,444.34	\$6,674,538.52
600 Supplies				
610 General Supplies	1,546.11	1,389.12	12,406.75	15,341.98
630 Food			944.30	944.30
650 Supplies & Fees – Technology Related	2,673.75	2,402.25		5,076.00
Total Supplies	\$4,219.86	\$3,791.37	\$13,351.05	\$21,362.28
800 Other Objects				
810 Dues and Fees	374.00	336.00	9,887.00	10,597.00
Total Other Objects	\$374.00	\$336.00	\$9,887.00	\$10,597.00
Total 1290 Special Programs - Other Support	\$8,970,138.90	\$5,266,951.14	\$1,177,272.37	\$15,414,362.41

General Fund (10)

1300 Vocational Education

	<u>Elementary</u>	<u>Secondary</u>	<u>Federal</u>	<u>Total</u>
100 Personnel Services – Salaries				
100 Personnel Services – Salaries		2,183,371.45		2,183,371.45
Total Personnel Services – Salaries		\$2,183,371.45		\$2,183,371.45
200 Personnel Services – Employee Benefits				
210 Group Insurance – Contracted Provider		8,015.00		8,015.00
220 Social Security Contributions		158,205.35		158,205.35
230 PSERS Retirement Contributions		729,763.23		729,763.23
250 Unemployment Compensation		1,134.07		1,134.07
260 Workers' Compensation		17,656.15		17,656.15
270 Group Insurance – Self-Insurance		409,595.17		409,595.17
299 All Other Employee Benefits		7,118.88		7,118.88
Total Personnel Services – Employee Benefits		\$1,331,487.85		\$1,331,487.85
300 Purchased Professional and Technical Services				
329 Professional Educational Services – Other		5,085.57		5,085.57
Total Purchased Professional and Technical Services		\$5,085.57		\$5,085.57
500 Other Purchased Services				
510 Student Transportation Services		2,963.96		2,963.96
564 Tuition To Career and Technology Centers		2,738,785.34		2,738,785.34
580 Travel		17,119.76		17,119.76
Total Other Purchased Services		\$2,758,869.06		\$2,758,869.06
600 Supplies				
610 General Supplies		94,204.88		94,204.88
630 Food		505.26		505.26
640 Books and Periodicals		3,954.26		3,954.26
650 Supplies & Fees – Technology Related		8,377.32		8,377.32
Total Supplies		\$107,041.72		\$107,041.72
800 Other Objects				
810 Dues and Fees		2,123.00		2,123.00
Total Other Objects		\$2,123.00		\$2,123.00
Total 1300 Vocational Education		\$6,387,978.65		\$6,387,978.65

General Fund (10)

	<u>Elementary</u>	<u>Secondary</u>	<u>Federal</u>	<u>Total</u>
1400 Other Instructional Programs – Elementary / Secondary				
100 Personnel Services – Salaries				
100 Personnel Services – Salaries		46,283.59		46,283.59
Total Personnel Services – Salaries		\$46,283.59		\$46,283.59
200 Personnel Services – Employee Benefits				
210 Group Insurance – Contracted Provider		9.74		9.74
220 Social Security Contributions		3,536.05		3,536.05
230 PSERS Retirement Contributions		15,532.71		15,532.71
Total Personnel Services – Employee Benefits		\$19,078.50		\$19,078.50
300 Purchased Professional and Technical Services				
322 Professional Educational Services – Ius	2,247.28	39,108.42		41,355.70
323 Professional Educational Services – Other Educational Agencies		560,473.80		560,473.80
Total Purchased Professional and Technical Services	\$2,247.28	\$599,582.22		\$601,829.50
400 Purchased Property Services				
440 Rentals		65,203.96		65,203.96
Total Purchased Property Services		\$65,203.96		\$65,203.96
500 Other Purchased Services				
530 Communications		263.02		263.02
561 Tuition To Other School Districts Within the State	14,740.40	28,710.20		43,450.60
563 Tuition To Nonpublic Schools		8,553.00		8,553.00
569 Tuition – Other		4,609.00		4,609.00
580 Travel		5.89		5.89
Total Other Purchased Services	\$14,740.40	\$42,141.11		\$56,881.51
600 Supplies				
610 General Supplies		(25.00)		(25.00)
Total Supplies		(\$25.00)		(\$25.00)
Total 1400 Other Instructional Programs – Elementary / Secondary	\$16,987.68	\$772,264.38		\$789,252.06

General Fund (10)

1420 Summer School

100 Personnel Services – Salaries

100 Personnel Services – Salaries

<u>Elementary</u>	<u>Secondary</u>	<u>Federal</u>	<u>Total</u>
-------------------	------------------	----------------	--------------

	44,542.34		44,542.34
--	-----------	--	-----------

Total Personnel Services – Salaries

	\$44,542.34		\$44,542.34
--	--------------------	--	--------------------

200 Personnel Services – Employee Benefits

210 Group Insurance – Contracted Provider

	9.74		9.74
--	------	--	------

220 Social Security Contributions

	3,408.55		3,408.55
--	----------	--	----------

230 PSERS Retirement Contributions

	14,950.74		14,950.74
--	-----------	--	-----------

Total Personnel Services – Employee Benefits

	\$18,369.03		\$18,369.03
--	--------------------	--	--------------------

500 Other Purchased Services

569 Tuition – Other

	4,609.00		4,609.00
--	----------	--	----------

Total Other Purchased Services

	\$4,609.00		\$4,609.00
--	-------------------	--	-------------------

Total 1420 Summer School

	\$67,520.37		\$67,520.37
--	--------------------	--	--------------------

General Fund (10)

1430 Homebound Instruction

100 Personnel Services – Salaries

100 Personnel Services – Salaries

Total Personnel Services – Salaries

200 Personnel Services – Employee Benefits

220 Social Security Contributions

230 PSERS Retirement Contributions

Total Personnel Services – Employee Benefits

500 Other Purchased Services

563 Tuition To Nonpublic Schools

580 Travel

Total Other Purchased Services

Total 1430 Homebound Instruction

Elementary

Secondary

Federal

Total

1,741.25

1,741.25

\$1,741.25

\$1,741.25

127.50

127.50

581.97

581.97

\$709.47

\$709.47

8,049.00

8,049.00

5.89

5.89

\$8,054.89

\$8,054.89

\$10,505.61

\$10,505.61

General Fund (10)

	<u>Elementary</u>	<u>Secondary</u>	<u>Federal</u>	<u>Total</u>
1440 Alternative Regular Education Programs				
300 <u>Purchased Professional and Technical Services</u>				
322 Professional Educational Services – lus	2,247.28	31,685.64		33,932.92
323 Professional Educational Services – Other Educational Agencies		560,473.80		560,473.80
Total Purchased Professional and Technical Services	\$2,247.28	\$592,159.44		\$594,406.72
400 <u>Purchased Property Services</u>				
440 Rentals		65,203.96		65,203.96
Total Purchased Property Services		\$65,203.96		\$65,203.96
500 <u>Other Purchased Services</u>				
530 Communications		263.02		263.02
561 Tuition To Other School Districts Within the State	14,740.40	13,243.64		27,984.04
563 Tuition To Nonpublic Schools		504.00		504.00
Total Other Purchased Services	\$14,740.40	\$14,010.66		\$28,751.06
600 <u>Supplies</u>				
610 General Supplies		(25.00)		(25.00)
Total Supplies		(\$25.00)		(\$25.00)
Total 1440 Alternative Regular Education Programs	\$16,987.68	\$671,349.06		\$688,336.74

General Fund (10)

1441 Adjudicated / Court-Placed Programs

300 Purchased Professional and Technical Services

322 Professional Educational Services – lus

Total Purchased Professional and Technical Services

500 Other Purchased Services

561 Tuition To Other School Districts Within the State

Total Other Purchased Services

Total 1441 Adjudicated / Court-Placed Programs

Elementary

Secondary

Federal

Total

2,247.28

2,019.08

4,266.36

\$2,247.28

\$2,019.08

\$4,266.36

14,740.40

13,243.64

27,984.04

\$14,740.40

\$13,243.64

\$27,984.04

\$16,987.68

\$15,262.72

\$32,250.40

General Fund (10)

	<u>Elementary</u>	<u>Secondary</u>	<u>Federal</u>	<u>Total</u>
1442 Alternative Education Programs				
300 <u>Purchased Professional and Technical Services</u>				
322 Professional Educational Services – Ius		29,666.56		29,666.56
323 Professional Educational Services – Other Educational Agencies		560,473.80		560,473.80
Total Purchased Professional and Technical Services		\$590,140.36		\$590,140.36
400 <u>Purchased Property Services</u>				
440 Rentals		65,203.96		65,203.96
Total Purchased Property Services		\$65,203.96		\$65,203.96
500 <u>Other Purchased Services</u>				
530 Communications		263.02		263.02
563 Tuition To Nonpublic Schools		504.00		504.00
Total Other Purchased Services		\$767.02		\$767.02
600 <u>Supplies</u>				
610 General Supplies		(25.00)		(25.00)
Total Supplies		(\$25.00)		(\$25.00)
Total 1442 Alternative Education Programs		\$656,086.34		\$656,086.34

General Fund (10)

	<u>Elementary</u>	<u>Secondary</u>	<u>Federal</u>	<u>Total</u>
1490 Additional Other Instructional Programs				
300 <u>Purchased Professional and Technical Services</u>				
322 Professional Educational Services – lus		7,422.78		7,422.78
Total Purchased Professional and Technical Services		\$7,422.78		\$7,422.78
500 <u>Other Purchased Services</u>				
561 Tuition To Other School Districts Within the State		15,466.56		15,466.56
Total Other Purchased Services		\$15,466.56		\$15,466.56
Total 1490 Additional Other Instructional Programs		\$22,889.34		\$22,889.34

General Fund (10)

1500 Nonpublic School Programs

300 Purchased Professional and Technical Services

322 Professional Educational Services – lus

Total Purchased Professional and Technical Services

Total 1500 Nonpublic School Programs

Elementary

Secondary

Federal

Total

46,342.17

46,342.17

\$46,342.17

\$46,342.17

\$46,342.17

\$46,342.17

General Fund (10)

2000 Support Services

Total

100 Personnel Services – Salaries

100 Personnel Services – Salaries 26,496,666.30

Total Personnel Services – Salaries

\$26,496,666.30

200 Personnel Services – Employee Benefits

210 Group Insurance – Contracted Provider 262,483.00

220 Social Security Contributions 1,874,791.97

230 PSERS Retirement Contributions 8,696,938.91

240 Tuition Reimbursement 427,943.28

250 Unemployment Compensation 13,438.91

260 Workers' Compensation 209,231.30

270 Group Insurance – Self-Insurance 4,767,158.00

299 All Other Employee Benefits 84,360.95

Total Personnel Services – Employee Benefits

\$16,336,346.32

300 Purchased Professional and Technical Services

310 Official / Administrative Services 585,625.04

322 Professional Educational Services – Ius 46,655.95

329 Professional Educational Services – Other 408,792.14

330 Other Professional Services 406,208.89

340 Technical Services 39,039.00

350 Security / Safety Services 7,598.05

390 Other Purchased Professional and Technical Services 123,809.49

Total Purchased Professional and Technical Services

\$1,617,728.56

400 Purchased Property Services

420 Utility Services 2,152,902.68

430 Repairs and Maintenance Services 903,244.23

440 Rentals 40,277.07

Total Purchased Property Services

\$3,096,423.98

500 Other Purchased Services

510 Student Transportation Services 1,154.83

513 Contracted Carriers 13,046,285.90

516 Student Transportation Services From the IU 9,039.45

520 Insurance – General 93,000.00

521 Fire Insurance 169,149.00

522 Automotive Liability Insurance 46,864.50

529 Other Insurance 143,126.00

530 Communications 315,472.45

549 Other Advertising/Public Relations 9,169.97

550 Printing and Binding 21,756.15

580 Travel 96,622.30

595 IU Payments By Withholding 128,297.37

Total Other Purchased Services

\$14,079,937.92

600 Supplies

610 General Supplies 1,108,986.78

620 Energy 755,988.85

General Fund (10)

2000 Support Services

Total

600 <u>Supplies</u>		
630 Food		44,078.76
640 Books and Periodicals		89,763.31
650 Supplies & Fees – Technology Related		382,950.97
Total Supplies		\$2,381,768.67
700 <u>Property</u>		
762 Capitalized Equipment - Replacement		180,267.00
Total Property		\$180,267.00
800 <u>Other Objects</u>		
810 Dues and Fees		134,623.98
899 Pass-Through Funds		137,574.16
Total Other Objects		\$272,198.14
Total 2000 Support Services		\$64,461,336.89

General Fund (10)

2100 Support Services – Students

	<u>Elementary</u>	<u>Secondary</u>	<u>Federal</u>	<u>Total</u>
100 Personnel Services – Salaries				
100 Personnel Services – Salaries	2,161,861.39	2,724,564.11		5,579,318.33
Total Personnel Services – Salaries	\$2,161,861.39	\$2,724,564.11		\$5,579,318.33
200 Personnel Services – Employee Benefits				
210 Group Insurance – Contracted Provider	10,067.95	9,015.65		21,315.88
220 Social Security Contributions	157,224.56	196,093.88		401,769.45
230 PSERS Retirement Contributions	720,873.06	907,108.55		1,858,696.36
250 Unemployment Compensation	1,092.57	1,387.75		2,839.00
260 Workers' Compensation	17,010.18	21,606.42		44,200.73
270 Group Insurance – Self-Insurance	327,080.48	506,465.91		1,044,288.70
299 All Other Employee Benefits	6,858.41	8,711.57		17,821.46
Total Personnel Services – Employee Benefits	\$1,240,207.21	\$1,650,389.73		\$3,390,931.58
300 Purchased Professional and Technical Services				
322 Professional Educational Services – Ius	24,575.69	22,080.26		46,655.95
329 Professional Educational Services – Other	42,189.27	37,905.33		80,094.60
330 Other Professional Services	131.69	118.31		250.00
390 Other Purchased Professional and Technical Services	56,485.47	50,749.91		110,001.49
Total Purchased Professional and Technical Services	\$123,382.12	\$110,853.81		\$237,002.04
400 Purchased Property Services				
440 Rentals	526.75	473.25		1,000.00
Total Purchased Property Services	\$526.75	\$473.25		\$1,000.00
500 Other Purchased Services				
510 Student Transportation Services	608.30	546.53		1,154.83
530 Communications	1,640.78	1,474.17		6,856.37
550 Printing and Binding	1,881.95	1,690.85		3,572.80
580 Travel	1,219.86	1,595.96		5,974.19
Total Other Purchased Services	\$5,350.89	\$5,307.51		\$17,558.19
600 Supplies				
610 General Supplies	24,861.78	34,245.63		61,360.03
650 Supplies & Fees – Technology Related	197.00	189.00		386.00
Total Supplies	\$25,058.78	\$34,434.63		\$61,746.03
800 Other Objects				
810 Dues and Fees	883.88	2,351.12		3,235.00
Total Other Objects	\$883.88	\$2,351.12		\$3,235.00
Total 2100 Support Services – Students	\$3,557,271.02	\$4,528,374.16		\$9,290,791.17

General Fund (10)

	<u>Elementary</u>	<u>Secondary</u>	<u>Federal</u>	<u>Total</u>
2110 Supervision of Student Services				
100 Personnel Services – Salaries				
100 Personnel Services – Salaries	207,395.18	186,336.16		393,731.34
Total Personnel Services – Salaries	\$207,395.18	\$186,336.16		\$393,731.34
200 Personnel Services – Employee Benefits				
210 Group Insurance – Contracted Provider	3,491.63	3,137.05		6,628.68
220 Social Security Contributions	13,580.75	12,201.75		25,782.50
230 PSERS Retirement Contributions	68,152.04	61,231.84		129,383.88
250 Unemployment Compensation	107.62	96.67		204.29
260 Workers' Compensation	1,675.38	1,505.25		3,180.63
270 Group Insurance – Self-Insurance	28,956.00	26,015.71		54,971.71
299 All Other Employee Benefits	675.51	606.90		1,282.41
Total Personnel Services – Employee Benefits	\$116,638.93	\$104,795.17		\$221,434.10
300 Purchased Professional and Technical Services				
329 Professional Educational Services – Other	25,223.14	22,661.96		47,885.10
Total Purchased Professional and Technical Services	\$25,223.14	\$22,661.96		\$47,885.10
500 Other Purchased Services				
530 Communications	1,640.78	1,474.17		3,114.95
580 Travel	669.06	601.11		1,270.17
Total Other Purchased Services	\$2,309.84	\$2,075.28		\$4,385.12
Total 2110 Supervision of Student Services	\$351,567.09	\$315,868.57		\$667,435.66

General Fund (10)

	<u>Elementary</u>	<u>Secondary</u>	<u>Federal</u>	<u>Total</u>
2111 Supervision of Student Services – Head of Component				
100 Personnel Services – Salaries				
100 Personnel Services – Salaries	123,145.65	110,641.37		233,787.02
Total Personnel Services – Salaries	\$123,145.65	\$110,641.37		\$233,787.02
200 Personnel Services – Employee Benefits				
210 Group Insurance – Contracted Provider	1,860.84	1,671.87		3,532.71
220 Social Security Contributions	7,180.48	6,451.37		13,631.85
230 PSERS Retirement Contributions	39,988.33	35,927.89		75,916.22
250 Unemployment Compensation	63.88	57.38		121.26
260 Workers' Compensation	994.45	893.47		1,887.92
270 Group Insurance – Self-Insurance	17,922.19	16,102.31		34,024.50
299 All Other Employee Benefits	400.96	360.24		761.20
Total Personnel Services – Employee Benefits	\$68,411.13	\$61,464.53		\$129,875.66
500 Other Purchased Services				
530 Communications	221.18	198.72		419.90
Total Other Purchased Services	\$221.18	\$198.72		\$419.90
Total 2111 Supervision of Student Services – Head of Component	\$191,777.96	\$172,304.62		\$364,082.58

General Fund (10)

2119 Supervision of Student Services – All Other Supervision

	<u>Elementary</u>	<u>Secondary</u>	<u>Federal</u>	<u>Total</u>
100 Personnel Services – Salaries				
100 Personnel Services – Salaries	84,249.53	75,694.79		159,944.32
Total Personnel Services – Salaries	\$84,249.53	\$75,694.79		\$159,944.32
200 Personnel Services – Employee Benefits				
210 Group Insurance – Contracted Provider	1,630.79	1,465.18		3,095.97
220 Social Security Contributions	6,400.27	5,750.38		12,150.65
230 PSERS Retirement Contributions	28,163.71	25,303.95		53,467.66
250 Unemployment Compensation	43.74	39.29		83.03
260 Workers' Compensation	680.93	611.78		1,292.71
270 Group Insurance – Self-Insurance	11,033.81	9,913.40		20,947.21
299 All Other Employee Benefits	274.55	246.66		521.21
Total Personnel Services – Employee Benefits	\$48,227.80	\$43,330.64		\$91,558.44
300 Purchased Professional and Technical Services				
329 Professional Educational Services – Other	25,223.14	22,661.96		47,885.10
Total Purchased Professional and Technical Services	\$25,223.14	\$22,661.96		\$47,885.10
500 Other Purchased Services				
530 Communications	1,419.60	1,275.45		2,695.05
580 Travel	669.06	601.11		1,270.17
Total Other Purchased Services	\$2,088.66	\$1,876.56		\$3,965.22
Total 2119 Supervision of Student Services – All Other Supervision	\$159,789.13	\$143,563.95		\$303,353.08

General Fund (10)

	<u>Elementary</u>	<u>Secondary</u>	<u>Federal</u>	<u>Total</u>
2120 Guidance Services				
100 Personnel Services – Salaries				
100 Personnel Services – Salaries	1,145,577.85	2,034,431.41		3,180,009.26
Total Personnel Services – Salaries	\$1,145,577.85	\$2,034,431.41		\$3,180,009.26
200 Personnel Services – Employee Benefits				
210 Group Insurance – Contracted Provider	4,492.66	4,872.55		9,365.21
220 Social Security Contributions	83,937.32	147,225.15		231,162.47
230 PSERS Retirement Contributions	382,972.59	677,438.25		1,060,410.84
250 Unemployment Compensation	580.51	1,043.56		1,624.07
260 Workers' Compensation	9,038.00	16,247.38		25,285.38
270 Group Insurance – Self-Insurance	188,363.52	385,600.10		573,963.62
299 All Other Employee Benefits	3,644.06	6,550.85		10,194.91
Total Personnel Services – Employee Benefits	\$673,028.66	\$1,238,977.84		\$1,912,006.50
300 Purchased Professional and Technical Services				
329 Professional Educational Services – Other	16,966.13	15,243.37		32,209.50
Total Purchased Professional and Technical Services	\$16,966.13	\$15,243.37		\$32,209.50
500 Other Purchased Services				
580 Travel	426.84	883.48		1,310.32
Total Other Purchased Services	\$426.84	\$883.48		\$1,310.32
600 Supplies				
610 General Supplies	3,138.67	14,728.31		17,866.98
650 Supplies & Fees – Technology Related	197.00	189.00		386.00
Total Supplies	\$3,335.67	\$14,917.31		\$18,252.98
800 Other Objects				
810 Dues and Fees		1,557.00		1,557.00
Total Other Objects		\$1,557.00		\$1,557.00
Total 2120 Guidance Services	\$1,839,335.15	\$3,306,010.41		\$5,145,345.56

General Fund (10)

2130 Attendance Services

Elementary

Secondary

Federal

Total

100 Personnel Services – Salaries

100 Personnel Services – Salaries

183,745.38

Total Personnel Services – Salaries

\$183,745.38

200 Personnel Services – Employee Benefits

210 Group Insurance – Contracted Provider

223.64

220 Social Security Contributions

11,958.92

230 PSERS Retirement Contributions

60,539.00

250 Unemployment Compensation

94.19

260 Workers' Compensation

1,466.26

270 Group Insurance – Self-Insurance

76,262.75

299 All Other Employee Benefits

591.18

Total Personnel Services – Employee Benefits

\$151,135.94

Total 2130 Attendance Services

\$334,881.32

General Fund (10)

	<u>Elementary</u>	<u>Secondary</u>	<u>Federal</u>	<u>Total</u>
2140 Psychological Services				
100 Personnel Services – Salaries				
100 Personnel Services – Salaries	808,888.36	430,095.52		1,238,983.88
Total Personnel Services – Salaries	\$808,888.36	\$430,095.52		\$1,238,983.88
200 Personnel Services – Employee Benefits				
210 Group Insurance – Contracted Provider	2,083.66	897.57		2,981.23
220 Social Security Contributions	59,706.49	31,439.06		91,145.55
230 PSERS Retirement Contributions	269,748.43	143,804.92		413,553.35
250 Unemployment Compensation	404.44	209.26		613.70
260 Workers' Compensation	6,296.80	3,258.11		9,554.91
270 Group Insurance – Self-Insurance	109,760.96	73,153.02		182,913.98
299 All Other Employee Benefits	2,538.84	1,313.65		3,852.49
Total Personnel Services – Employee Benefits	\$450,539.62	\$254,075.59		\$704,615.21
300 Purchased Professional and Technical Services				
322 Professional Educational Services – Ius	24,575.69	22,080.26		46,655.95
390 Other Purchased Professional and Technical Services	56,485.47	50,749.91		107,235.38
Total Purchased Professional and Technical Services	\$81,061.16	\$72,830.17		\$153,891.33
500 Other Purchased Services				
580 Travel	123.96	111.37		235.33
Total Other Purchased Services	\$123.96	\$111.37		\$235.33
600 Supplies				
610 General Supplies	21,723.11	19,517.32		41,240.43
Total Supplies	\$21,723.11	\$19,517.32		\$41,240.43
800 Other Objects				
810 Dues and Fees	883.88	794.12		1,678.00
Total Other Objects	\$883.88	\$794.12		\$1,678.00
Total 2140 Psychological Services	\$1,363,220.09	\$777,424.09		\$2,140,644.18

General Fund (10)

2160 Social Work Services

Elementary Secondary Federal Total

100	<u>Personnel Services – Salaries</u>				
	100 Personnel Services – Salaries				509,147.45
Total Personnel Services – Salaries					\$509,147.45
200	<u>Personnel Services – Employee Benefits</u>				
	210 Group Insurance – Contracted Provider				2,008.64
	220 Social Security Contributions				36,492.09
	230 PSERS Retirement Contributions				170,175.75
	250 Unemployment Compensation				264.49
	260 Workers' Compensation				4,117.87
	270 Group Insurance – Self-Insurance				134,479.56
	299 All Other Employee Benefits				1,660.30
Total Personnel Services – Employee Benefits					\$349,198.70
300	<u>Purchased Professional and Technical Services</u>				
	390 Other Purchased Professional and Technical Services				2,766.11
Total Purchased Professional and Technical Services					\$2,766.11
500	<u>Other Purchased Services</u>				
	530 Communications				3,741.42
	580 Travel				3,158.37
Total Other Purchased Services					\$6,899.79
600	<u>Supplies</u>				
	610 General Supplies				2,252.62
Total Supplies					\$2,252.62
Total 2160 Social Work Services					\$870,264.67

General Fund (10)

	<u>Elementary</u>	<u>Secondary</u>	<u>Federal</u>	<u>Total</u>
2190 Other Student Services				
100 Personnel Services – Salaries				
100 Personnel Services – Salaries		73,701.02		73,701.02
Total Personnel Services – Salaries		\$73,701.02		\$73,701.02
200 Personnel Services – Employee Benefits				
210 Group Insurance – Contracted Provider		108.48		108.48
220 Social Security Contributions		5,227.92		5,227.92
230 PSERS Retirement Contributions		24,633.54		24,633.54
250 Unemployment Compensation		38.26		38.26
260 Workers' Compensation		595.68		595.68
270 Group Insurance – Self-Insurance		21,697.08		21,697.08
299 All Other Employee Benefits		240.17		240.17
Total Personnel Services – Employee Benefits		\$52,541.13		\$52,541.13
300 Purchased Professional and Technical Services				
330 Other Professional Services	131.69	118.31		250.00
Total Purchased Professional and Technical Services	\$131.69	\$118.31		\$250.00
400 Purchased Property Services				
440 Rentals	526.75	473.25		1,000.00
Total Purchased Property Services	\$526.75	\$473.25		\$1,000.00
500 Other Purchased Services				
510 Student Transportation Services	608.30	546.53		1,154.83
550 Printing and Binding	1,881.95	1,690.85		3,572.80
Total Other Purchased Services	\$2,490.25	\$2,237.38		\$4,727.63
Total 2190 Other Student Services	\$3,148.69	\$129,071.09		\$132,219.78

General Fund (10)

2200 Support Services – Instructional Staff

	<u>Elementary</u>	<u>Secondary</u>	<u>Federal</u>	<u>Total</u>
100 Personnel Services – Salaries				
100 Personnel Services – Salaries	1,579,721.18	1,161,053.88	48,047.56	2,788,822.62
Total Personnel Services – Salaries	\$1,579,721.18	\$1,161,053.88	\$48,047.56	\$2,788,822.62
200 Personnel Services – Employee Benefits				
210 Group Insurance – Contracted Provider	8,101.73	6,823.51	5.81	14,931.05
220 Social Security Contributions	112,039.03	82,020.33	3,524.81	197,584.17
230 PSERS Retirement Contributions	522,786.03	383,377.84	16,063.38	922,227.25
240 Tuition Reimbursement	292,196.99	135,746.29		427,943.28
250 Unemployment Compensation	812.65	596.13		1,408.78
260 Workers' Compensation	12,651.42	9,281.93		21,933.35
270 Group Insurance – Self-Insurance	295,061.74	201,445.56		496,507.30
299 All Other Employee Benefits	5,101.02	3,742.40		8,843.42
Total Personnel Services – Employee Benefits	\$1,248,750.61	\$823,033.99	\$19,594.00	\$2,091,378.60
300 Purchased Professional and Technical Services				
329 Professional Educational Services – Other	30,888.74	41,524.93	131,690.11	204,103.78
390 Other Purchased Professional and Technical Services	1,000.00			1,000.00
Total Purchased Professional and Technical Services	\$31,888.74	\$41,524.93	\$131,690.11	\$205,103.78
400 Purchased Property Services				
430 Repairs and Maintenance Services	39.63	3,303.59		3,343.22
440 Rentals	1,964.84	1,765.29		3,730.13
Total Purchased Property Services	\$2,004.47	\$5,068.88		\$7,073.35
500 Other Purchased Services				
530 Communications	2,409.71	2,164.97		4,574.68
550 Printing and Binding	165.46	148.65		314.11
580 Travel	11,089.09	11,085.79	20,073.79	42,248.67
Total Other Purchased Services	\$13,664.26	\$13,399.41	\$20,073.79	\$47,137.46
600 Supplies				
610 General Supplies	15,480.38	19,873.55	12.99	35,366.92
630 Food	2,201.22	2,242.63	2,171.38	6,615.23
640 Books and Periodicals	38,396.00	41,947.23	2,055.91	82,399.14
650 Supplies & Fees – Technology Related	32,182.73	66,554.35		98,737.08
Total Supplies	\$88,260.33	\$130,617.76	\$4,240.28	\$223,118.37
800 Other Objects				
810 Dues and Fees	3,010.91	2,705.08	15,360.00	21,075.99
Total Other Objects	\$3,010.91	\$2,705.08	\$15,360.00	\$21,075.99
Total 2200 Support Services – Instructional Staff	\$2,967,300.50	\$2,177,403.93	\$239,005.74	\$5,383,710.17

General Fund (10)

2210 Supervision of Educational Media Services

300 Purchased Professional and Technical Services

	<u>Elementary</u>	<u>Secondary</u>	<u>Federal</u>	<u>Total</u>
329 Professional Educational Services – Other	263.38	236.62		500.00
Total Purchased Professional and Technical Services	\$263.38	\$236.62		\$500.00

400 Purchased Property Services

440 Rentals	842.07	756.55		1,598.62
Total Purchased Property Services	\$842.07	\$756.55		\$1,598.62

500 Other Purchased Services

530 Communications	511.69	459.73		971.42
580 Travel	1,056.74	949.42		2,006.16
Total Other Purchased Services	\$1,568.43	\$1,409.15		\$2,977.58

600 Supplies

630 Food	174.96	157.18		332.14
640 Books and Periodicals	165.38	148.57		313.95
650 Supplies & Fees – Technology Related	89.51	80.42		169.93
Total Supplies	\$429.85	\$386.17		\$816.02

800 Other Objects

810 Dues and Fees	792.23	711.77		1,504.00
Total Other Objects	\$792.23	\$711.77		\$1,504.00

Total 2210 Supervision of Educational Media Services	\$3,895.96	\$3,500.26		\$7,396.22
---	-------------------	-------------------	--	-------------------

General Fund (10)

2219 Supervision of Educational Media Services – All Other Supervision

	<u>Elementary</u>	<u>Secondary</u>	<u>Federal</u>	<u>Total</u>
300 <u>Purchased Professional and Technical Services</u>				
329 Professional Educational Services – Other	263.38	236.62		500.00
Total Purchased Professional and Technical Services	\$263.38	\$236.62		\$500.00
400 <u>Purchased Property Services</u>				
440 Rentals	842.07	756.55		1,598.62
Total Purchased Property Services	\$842.07	\$756.55		\$1,598.62
500 <u>Other Purchased Services</u>				
530 Communications	511.69	459.73		971.42
580 Travel	1,056.74	949.42		2,006.16
Total Other Purchased Services	\$1,568.43	\$1,409.15		\$2,977.58
600 <u>Supplies</u>				
630 Food	174.96	157.18		332.14
640 Books and Periodicals	165.38	148.57		313.95
650 Supplies & Fees – Technology Related	89.51	80.42		169.93
Total Supplies	\$429.85	\$386.17		\$816.02
800 <u>Other Objects</u>				
810 Dues and Fees	792.23	711.77		1,504.00
Total Other Objects	\$792.23	\$711.77		\$1,504.00
Total 2219 Supervision of Educational Media Services – All Other Supervision	\$3,895.96	\$3,500.26		\$7,396.22

General Fund (10)

2220 Technology Support Services

	<u>Elementary</u>	<u>Secondary</u>	<u>Federal</u>	<u>Total</u>
100 Personnel Services – Salaries				
100 Personnel Services – Salaries		90,316.53		90,316.53
Total Personnel Services – Salaries		\$90,316.53		\$90,316.53
200 Personnel Services – Employee Benefits				
210 Group Insurance – Contracted Provider		258.22		258.22
220 Social Security Contributions		6,600.48		6,600.48
230 PSERS Retirement Contributions		30,188.48		30,188.48
250 Unemployment Compensation		46.91		46.91
260 Workers' Compensation		730.46		730.46
270 Group Insurance – Self-Insurance		17,451.18		17,451.18
299 All Other Employee Benefits		294.52		294.52
Total Personnel Services – Employee Benefits		\$55,570.25		\$55,570.25
600 Supplies				
610 General Supplies	2,916.81	6,030.97		8,947.78
650 Supplies & Fees – Technology Related	463.20	9,440.85		9,904.05
Total Supplies	\$3,380.01	\$15,471.82		\$18,851.83
Total 2220 Technology Support Services	\$3,380.01	\$161,358.60		\$164,738.61

General Fund (10)

	<u>Elementary</u>	<u>Secondary</u>	<u>Federal</u>	<u>Total</u>
2250 School Library Services				
100 Personnel Services – Salaries				
100 Personnel Services – Salaries	928,910.18	486,010.16		1,414,920.34
Total Personnel Services – Salaries	\$928,910.18	\$486,010.16		\$1,414,920.34
200 Personnel Services – Employee Benefits				
210 Group Insurance – Contracted Provider	2,658.03	1,674.59		4,332.62
220 Social Security Contributions	66,720.42	34,703.05		101,423.47
230 PSERS Retirement Contributions	310,481.29	162,442.26		472,923.55
250 Unemployment Compensation	482.09	252.32		734.41
260 Workers' Compensation	7,505.61	3,928.31		11,433.92
270 Group Insurance – Self-Insurance	205,985.15	103,963.10		309,948.25
299 All Other Employee Benefits	3,026.23	1,583.87		4,610.10
Total Personnel Services – Employee Benefits	\$596,858.82	\$308,547.50		\$905,406.32
300 Purchased Professional and Technical Services				
329 Professional Educational Services – Other	726.74	652.93		1,379.67
Total Purchased Professional and Technical Services	\$726.74	\$652.93		\$1,379.67
400 Purchased Property Services				
430 Repairs and Maintenance Services		3,268.00		3,268.00
Total Purchased Property Services		\$3,268.00		\$3,268.00
600 Supplies				
610 General Supplies	7,007.99	8,427.72		15,435.71
630 Food	205.10	184.26		389.36
640 Books and Periodicals	35,767.59	39,274.30		75,041.89
650 Supplies & Fees – Technology Related	31,547.34	56,958.82		88,506.16
Total Supplies	\$74,528.02	\$104,845.10		\$179,373.12
Total 2250 School Library Services	\$1,601,023.76	\$903,323.69		\$2,504,347.45

General Fund (10)

	<u>Elementary</u>	<u>Secondary</u>	<u>Federal</u>	<u>Total</u>
2260 Instruction and Curriculum Development Services				
100 Personnel Services – Salaries				
100 Personnel Services – Salaries	541,706.34	486,701.08		1,028,407.42
Total Personnel Services – Salaries	\$541,706.34	\$486,701.08		\$1,028,407.42
200 Personnel Services – Employee Benefits				
210 Group Insurance – Contracted Provider	4,632.73	4,162.12		8,794.85
220 Social Security Contributions	36,934.70	33,184.22		70,118.92
230 PSERS Retirement Contributions	176,486.30	158,565.70		335,052.00
250 Unemployment Compensation	281.24	252.60		533.84
260 Workers' Compensation	4,378.01	3,933.33		8,311.34
270 Group Insurance – Self-Insurance	84,530.54	75,946.87		160,477.41
299 All Other Employee Benefits	1,765.21	1,585.88		3,351.09
Total Personnel Services – Employee Benefits	\$309,008.73	\$277,630.72		\$586,639.45
300 Purchased Professional and Technical Services				
329 Professional Educational Services – Other	1,132.51	14,790.22		15,922.73
Total Purchased Professional and Technical Services	\$1,132.51	\$14,790.22		\$15,922.73
400 Purchased Property Services				
430 Repairs and Maintenance Services	39.63	35.59		75.22
440 Rentals	1,122.77	1,008.74		2,131.51
Total Purchased Property Services	\$1,162.40	\$1,044.33		\$2,206.73
500 Other Purchased Services				
530 Communications	1,898.02	1,705.24		3,603.26
580 Travel	6,114.35	6,616.25		12,730.60
Total Other Purchased Services	\$8,012.37	\$8,321.49		\$16,333.86
600 Supplies				
610 General Supplies	4,152.94	4,154.68		8,307.62
630 Food	72.29	329.94		402.23
640 Books and Periodicals	314.85	594.33		909.18
650 Supplies & Fees – Technology Related	39.48	35.46		74.94
Total Supplies	\$4,579.56	\$5,114.41		\$9,693.97
800 Other Objects				
810 Dues and Fees	1,887.88	1,696.11		3,583.99
Total Other Objects	\$1,887.88	\$1,696.11		\$3,583.99
Total 2260 Instruction and Curriculum Development Services	\$867,489.79	\$795,298.36		\$1,662,788.15

General Fund (10)

	<u>Elementary</u>	<u>Secondary</u>	<u>Federal</u>	<u>Total</u>
2270 Instructional Staff Professional Development Services				
100 Personnel Services – Salaries				
100 Personnel Services – Salaries	109,104.66	98,026.11	48,047.56	255,178.33
Total Personnel Services – Salaries	\$109,104.66	\$98,026.11	\$48,047.56	\$255,178.33
200 Personnel Services – Employee Benefits				
210 Group Insurance – Contracted Provider	810.97	728.58	5.81	1,545.36
220 Social Security Contributions	8,383.91	7,532.58	3,524.81	19,441.30
230 PSERS Retirement Contributions	35,818.44	32,181.40	16,063.38	84,063.22
240 Tuition Reimbursement	292,196.99	135,746.29		427,943.28
250 Unemployment Compensation	49.32	44.30		93.62
260 Workers' Compensation	767.80	689.83		1,457.63
270 Group Insurance – Self-Insurance	4,546.05	4,084.41		8,630.46
299 All Other Employee Benefits	309.58	278.13		587.71
Total Personnel Services – Employee Benefits	\$342,883.06	\$181,285.52	\$19,594.00	\$543,762.58
300 Purchased Professional and Technical Services				
329 Professional Educational Services – Other	28,766.11	25,845.16	131,690.11	186,301.38
390 Other Purchased Professional and Technical Services	1,000.00			1,000.00
Total Purchased Professional and Technical Services	\$29,766.11	\$25,845.16	\$131,690.11	\$187,301.38
500 Other Purchased Services				
550 Printing and Binding	165.46	148.65		314.11
580 Travel	3,918.00	3,520.12	20,073.79	27,511.91
Total Other Purchased Services	\$4,083.46	\$3,668.77	\$20,073.79	\$27,826.02
600 Supplies				
610 General Supplies	1,402.64	1,260.18	12.99	2,675.81
630 Food	1,748.87	1,571.25	2,171.38	5,491.50
640 Books and Periodicals	2,148.18	1,930.03	2,055.91	6,134.12
650 Supplies & Fees – Technology Related	43.20	38.80		82.00
Total Supplies	\$5,342.89	\$4,800.26	\$4,240.28	\$14,383.43
800 Other Objects				
810 Dues and Fees	330.80	297.20	15,360.00	15,988.00
Total Other Objects	\$330.80	\$297.20	\$15,360.00	\$15,988.00
Total 2270 Instructional Staff Professional Development Services	\$491,510.98	\$313,923.02	\$239,005.74	\$1,044,439.74

General Fund (10)

2300 Support Services – Administration

100 Personnel Services – Salaries

	<u>Elementary</u>	<u>Secondary</u>	<u>Federal</u>	<u>Total</u>
100 Personnel Services – Salaries	2,114,307.32	3,534,913.21		6,685,451.17
Total Personnel Services – Salaries	\$2,114,307.32	\$3,534,913.21		\$6,685,451.17

200 Personnel Services – Employee Benefits

210 Group Insurance – Contracted Provider	28,742.13	27,826.72		189,082.35
220 Social Security Contributions	144,592.78	249,829.44		455,331.42
230 PSERS Retirement Contributions	692,261.29	1,152,116.69		2,164,362.52
250 Unemployment Compensation	1,095.69	1,832.62		3,454.40
260 Workers' Compensation	17,058.83	28,532.12		53,781.57
270 Group Insurance – Self-Insurance	315,129.89	432,257.43		873,401.20
299 All Other Employee Benefits	6,878.04	11,504.00		21,684.45
Total Personnel Services – Employee Benefits	\$1,205,758.65	\$1,903,899.02		\$3,761,097.91

300 Purchased Professional and Technical Services

310 Official / Administrative Services		650.00		585,625.04
329 Professional Educational Services – Other	480.00	872.71		3,978.71
330 Other Professional Services		830.00		330,474.44
340 Technical Services				9,801.57
350 Security / Safety Services		598.05		598.05
390 Other Purchased Professional and Technical Services				8,888.00
Total Purchased Professional and Technical Services	\$480.00	\$2,950.76		\$939,365.81

400 Purchased Property Services

430 Repairs and Maintenance Services	4,139.29	12,168.49		17,747.33
440 Rentals		584.40		4,948.12
Total Purchased Property Services	\$4,139.29	\$12,752.89		\$22,695.45

500 Other Purchased Services

520 Insurance – General				93,000.00
530 Communications	5,110.20	15,694.04		37,678.06
549 Other Advertising/Public Relations				6,273.16
550 Printing and Binding		2,671.53		16,968.07
580 Travel		5,948.09		24,108.01
Total Other Purchased Services	\$5,110.20	\$24,313.66		\$178,027.30

600 Supplies

610 General Supplies	6,425.98	80,131.52		97,943.49
630 Food	2,986.66	20,282.12		33,947.98
640 Books and Periodicals	668.01	1,802.25		4,067.92
650 Supplies & Fees – Technology Related	209.31			1,617.00
Total Supplies	\$10,289.96	\$102,215.89		\$137,576.39

700 Property

762 Capitalized Equipment - Replacement		12,119.99		12,119.99
Total Property		\$12,119.99		\$12,119.99

800 Other Objects

General Fund (10)

2300 Support Services – Administration

800 Other Objects

810 Dues and Fees

Total Other Objects

Total 2300 Support Services – Administration

	<u>Elementary</u>	<u>Secondary</u>	<u>Federal</u>	<u>Total</u>
810 Dues and Fees	5,042.00	5,556.98		44,973.92
Total Other Objects	\$5,042.00	\$5,556.98		\$44,973.92
Total 2300 Support Services – Administration	\$3,345,127.42	\$5,598,722.40		\$11,781,307.94

General Fund (10)

2310 Board Services

Elementary

Secondary

Federal

Total

100 Personnel Services – Salaries

100 Personnel Services – Salaries

3,976.33

Total Personnel Services – Salaries

\$3,976.33

200 Personnel Services – Employee Benefits

220 Social Security Contributions

293.64

230 PSERS Retirement Contributions

1,329.05

Total Personnel Services – Employee Benefits

\$1,622.69

300 Purchased Professional and Technical Services

330 Other Professional Services

26,000.00

Total Purchased Professional and Technical Services

\$26,000.00

500 Other Purchased Services

520 Insurance – General

85,816.50

549 Other Advertising/Public Relations

2,769.16

Total Other Purchased Services

\$88,585.66

600 Supplies

610 General Supplies

86.47

630 Food

4,464.00

Total Supplies

\$4,550.47

800 Other Objects

810 Dues and Fees

15,025.00

Total Other Objects

\$15,025.00

Total 2310 Board Services

\$139,760.15

General Fund (10)

2330 Tax Assessment and Collection Services

Elementary

Secondary

Federal

Total

200 Personnel Services – Employee Benefits

220 Social Security Contributions

57.33

Total Personnel Services – Employee Benefits

\$57.33

300 Purchased Professional and Technical Services

310 Official / Administrative Services

584,975.04

390 Other Purchased Professional and Technical Services

8,888.00

Total Purchased Professional and Technical Services

\$593,863.04

500 Other Purchased Services

520 Insurance – General

7,183.50

530 Communications

14,773.29

Total Other Purchased Services

\$21,956.79

800 Other Objects

810 Dues and Fees

9,211.44

Total Other Objects

\$9,211.44

Total 2330 Tax Assessment and Collection Services

\$625,088.60

General Fund (10)

2350 Legal and Accounting Services

Elementary

Secondary

Federal

Total

300 Purchased Professional and Technical Services

330 Other Professional Services

303,644.44

Total Purchased Professional and Technical Services

\$303,644.44

Total 2350 Legal and Accounting Services

\$303,644.44

General Fund (10)

	<u>Elementary</u>	<u>Secondary</u>	<u>Federal</u>	<u>Total</u>
2360 Office of the Superintendent / Executive Director Services				
100 Personnel Services – Salaries				
100 Personnel Services – Salaries				875,586.22
Total Personnel Services – Salaries				\$875,586.22
200 Personnel Services – Employee Benefits				
210 Group Insurance – Contracted Provider				132,291.88
220 Social Security Contributions				49,099.27
230 PSERS Retirement Contributions				266,282.37
250 Unemployment Compensation				451.50
260 Workers' Compensation				7,029.39
270 Group Insurance – Self-Insurance				102,600.57
299 All Other Employee Benefits				2,834.21
Total Personnel Services – Employee Benefits				\$560,589.19
300 Purchased Professional and Technical Services				
329 Professional Educational Services – Other				2,626.00
Total Purchased Professional and Technical Services				\$2,626.00
400 Purchased Property Services				
430 Repairs and Maintenance Services				1,439.55
440 Rentals				4,363.72
Total Purchased Property Services				\$5,803.27
500 Other Purchased Services				
530 Communications	1,331.10	1,195.92		2,527.02
580 Travel				9,051.79
Total Other Purchased Services	\$1,331.10	\$1,195.92		\$11,578.81
600 Supplies				
610 General Supplies				5,013.21
630 Food				6,215.20
640 Books and Periodicals				1,146.66
Total Supplies				\$12,375.07
800 Other Objects				
810 Dues and Fees				8,178.50
Total Other Objects				\$8,178.50
Total 2360 Office of the Superintendent / Executive Director Services	\$1,331.10	\$1,195.92		\$1,476,737.06

General Fund (10)

2370 Community Relations Services

	<u>Elementary</u>	<u>Secondary</u>	<u>Federal</u>	<u>Total</u>
--	-------------------	------------------	----------------	--------------

100 Personnel Services – Salaries

				156,668.09
--	--	--	--	------------

Total Personnel Services – Salaries				\$156,668.09
--	--	--	--	---------------------

200 Personnel Services – Employee Benefits

210 Group Insurance – Contracted Provider				221.62
220 Social Security Contributions				11,458.96
230 PSERS Retirement Contributions				52,373.12
250 Unemployment Compensation				74.59
260 Workers' Compensation				1,161.23
270 Group Insurance – Self-Insurance				23,413.31
299 All Other Employee Benefits				468.20

Total Personnel Services – Employee Benefits				\$89,171.03
---	--	--	--	--------------------

300 Purchased Professional and Technical Services

340 Technical Services				9,801.57
------------------------	--	--	--	----------

Total Purchased Professional and Technical Services				\$9,801.57
--	--	--	--	-------------------

500 Other Purchased Services

530 Communications				2,100.53
549 Other Advertising/Public Relations				3,504.00
550 Printing and Binding				14,296.54
580 Travel				9,108.13

Total Other Purchased Services				\$29,009.20
---------------------------------------	--	--	--	--------------------

600 Supplies

610 General Supplies				6,286.31
640 Books and Periodicals				451.00
650 Supplies & Fees – Technology Related				1,407.69

Total Supplies				\$8,145.00
-----------------------	--	--	--	-------------------

800 Other Objects

810 Dues and Fees				1,960.00
-------------------	--	--	--	----------

Total Other Objects				\$1,960.00
----------------------------	--	--	--	-------------------

Total 2370 Community Relations Services				\$294,754.89
--	--	--	--	---------------------

General Fund (10)

2380 Office of the Principal Services

	<u>Elementary</u>	<u>Secondary</u>	<u>Federal</u>	<u>Total</u>
100 Personnel Services – Salaries				
100 Personnel Services – Salaries	2,114,307.32	3,534,913.21		5,649,220.53
Total Personnel Services – Salaries	\$2,114,307.32	\$3,534,913.21		\$5,649,220.53
200 Personnel Services – Employee Benefits				
210 Group Insurance – Contracted Provider	28,742.13	27,826.72		56,568.85
220 Social Security Contributions	144,592.78	249,829.44		394,422.22
230 PSERS Retirement Contributions	692,261.29	1,152,116.69		1,844,377.98
250 Unemployment Compensation	1,095.69	1,832.62		2,928.31
260 Workers' Compensation	17,058.83	28,532.12		45,590.95
270 Group Insurance – Self-Insurance	315,129.89	432,257.43		747,387.32
299 All Other Employee Benefits	6,878.04	11,504.00		18,382.04
Total Personnel Services – Employee Benefits	\$1,205,758.65	\$1,903,899.02		\$3,109,657.67
300 Purchased Professional and Technical Services				
310 Official / Administrative Services		650.00		650.00
329 Professional Educational Services – Other	480.00	872.71		1,352.71
330 Other Professional Services		830.00		830.00
350 Security / Safety Services		598.05		598.05
Total Purchased Professional and Technical Services	\$480.00	\$2,950.76		\$3,430.76
400 Purchased Property Services				
430 Repairs and Maintenance Services	4,139.29	12,168.49		16,307.78
440 Rentals		584.40		584.40
Total Purchased Property Services	\$4,139.29	\$12,752.89		\$16,892.18
500 Other Purchased Services				
530 Communications	3,779.10	14,498.12		18,277.22
550 Printing and Binding		2,671.53		2,671.53
580 Travel		5,948.09		5,948.09
Total Other Purchased Services	\$3,779.10	\$23,117.74		\$26,896.84
600 Supplies				
610 General Supplies	6,425.98	80,131.52		86,557.50
630 Food	2,986.66	20,282.12		23,268.78
640 Books and Periodicals	668.01	1,802.25		2,470.26
650 Supplies & Fees – Technology Related	209.31			209.31
Total Supplies	\$10,289.96	\$102,215.89		\$112,505.85
700 Property				
762 Capitalized Equipment - Replacement		12,119.99		12,119.99
Total Property		\$12,119.99		\$12,119.99
800 Other Objects				
810 Dues and Fees	5,042.00	5,556.98		10,598.98
Total Other Objects	\$5,042.00	\$5,556.98		\$10,598.98
Total 2380 Office of the Principal Services	\$3,343,796.32	\$5,597,526.48		\$8,941,322.80

General Fund (10)

	<u>Elementary</u>	<u>Secondary</u>	<u>Federal</u>	<u>Total</u>
2400 Support Services – Pupil Health				
100 Personnel Services – Salaries				
100 Personnel Services – Salaries				1,339,393.86
Total Personnel Services – Salaries				\$1,339,393.86
200 Personnel Services – Employee Benefits				
210 Group Insurance – Contracted Provider				3,978.86
220 Social Security Contributions				94,213.89
230 PSERS Retirement Contributions				444,497.37
250 Unemployment Compensation				688.00
260 Workers' Compensation				10,711.62
270 Group Insurance – Self-Insurance				364,452.55
299 All Other Employee Benefits				4,318.88
Total Personnel Services – Employee Benefits				\$922,861.17
300 Purchased Professional and Technical Services				
329 Professional Educational Services – Other				11,709.42
330 Other Professional Services				4,235.00
390 Other Purchased Professional and Technical Services				2,840.00
Total Purchased Professional and Technical Services				\$18,784.42
400 Purchased Property Services				
430 Repairs and Maintenance Services				1,329.03
Total Purchased Property Services				\$1,329.03
500 Other Purchased Services				
530 Communications				491.53
580 Travel				526.28
Total Other Purchased Services				\$1,017.81
600 Supplies				
610 General Supplies				28,217.96
Total Supplies				\$28,217.96
800 Other Objects				
810 Dues and Fees				260.00
Total Other Objects				\$260.00
Total 2400 Support Services – Pupil Health				\$2,311,864.25

General Fund (10)

2420 Medical Services

Elementary

Secondary

Federal

Total

300 Purchased Professional and Technical Services

330 Other Professional Services

3,375.00

Total Purchased Professional and Technical Services

\$3,375.00

Total 2420 Medical Services

\$3,375.00

General Fund (10)

2430 Dental Services

Elementary

Secondary

Federal

Total

300 Purchased Professional and Technical Services

330 Other Professional Services

860.00

Total Purchased Professional and Technical Services

\$860.00

600 Supplies

610 General Supplies

357.00

Total Supplies

\$357.00

Total 2430 Dental Services

\$1,217.00

General Fund (10)

2440 Nursing Services

	<u>Elementary</u>	<u>Secondary</u>	<u>Federal</u>	<u>Total</u>
100 Personnel Services – Salaries				
100 Personnel Services – Salaries				1,229,452.80
Total Personnel Services – Salaries				\$1,229,452.80
200 Personnel Services – Employee Benefits				
210 Group Insurance – Contracted Provider				3,824.59
220 Social Security Contributions				87,015.46
230 PSERS Retirement Contributions				407,744.57
250 Unemployment Compensation				630.89
260 Workers' Compensation				9,822.44
270 Group Insurance – Self-Insurance				306,870.01
299 All Other Employee Benefits				3,960.37
Total Personnel Services – Employee Benefits				\$819,868.33
300 Purchased Professional and Technical Services				
329 Professional Educational Services – Other				11,709.42
390 Other Purchased Professional and Technical Services				2,840.00
Total Purchased Professional and Technical Services				\$14,549.42
400 Purchased Property Services				
430 Repairs and Maintenance Services				1,329.03
Total Purchased Property Services				\$1,329.03
500 Other Purchased Services				
530 Communications				491.53
580 Travel				526.28
Total Other Purchased Services				\$1,017.81
600 Supplies				
610 General Supplies				27,860.96
Total Supplies				\$27,860.96
800 Other Objects				
810 Dues and Fees				260.00
Total Other Objects				\$260.00
Total 2440 Nursing Services				\$2,094,338.35

General Fund (10)

2450 Nonpublic Health Services

Elementary

Secondary

Federal

Total

100 Personnel Services – Salaries

100 Personnel Services – Salaries

109,941.06

Total Personnel Services – Salaries

\$109,941.06

200 Personnel Services – Employee Benefits

210 Group Insurance – Contracted Provider

154.27

220 Social Security Contributions

7,198.43

230 PSERS Retirement Contributions

36,752.80

250 Unemployment Compensation

57.11

260 Workers' Compensation

889.18

270 Group Insurance – Self-Insurance

57,582.54

299 All Other Employee Benefits

358.51

Total Personnel Services – Employee Benefits

\$102,992.84

Total 2450 Nonpublic Health Services

\$212,933.90

General Fund (10)

2500 Support Services – Business

Elementary

Secondary

Federal

Total

100 Personnel Services – Salaries

100 Personnel Services – Salaries 1,115,667.12

Total Personnel Services – Salaries \$1,115,667.12

200 Personnel Services – Employee Benefits

210 Group Insurance – Contracted Provider 6,582.11

220 Social Security Contributions 72,381.79

230 PSERS Retirement Contributions 351,407.03

250 Unemployment Compensation 579.51

260 Workers' Compensation 9,022.33

270 Group Insurance – Self-Insurance 227,375.53

299 All Other Employee Benefits 3,637.77

Total Personnel Services – Employee Benefits \$670,986.07

300 Purchased Professional and Technical Services

329 Professional Educational Services – Other 3,575.91

330 Other Professional Services 3,500.00

390 Other Purchased Professional and Technical Services 1,080.00

Total Purchased Professional and Technical Services \$8,155.91

400 Purchased Property Services

430 Repairs and Maintenance Services 770.84

440 Rentals 7,045.92

Total Purchased Property Services \$7,816.76

500 Other Purchased Services

530 Communications 11,769.62

580 Travel 2,488.47

Total Other Purchased Services \$14,258.09

600 Supplies

610 General Supplies 5,303.85

630 Food 735.35

640 Books and Periodicals 964.86

650 Supplies & Fees – Technology Related 9,000.00

Total Supplies \$16,004.06

800 Other Objects

810 Dues and Fees 20,862.21

Total Other Objects \$20,862.21

Total 2500 Support Services – Business \$1,853,750.22

General Fund (10)

2510 Fiscal Services

Elementary Secondary Federal Total

100	<u>Personnel Services – Salaries</u>				
	100 Personnel Services – Salaries				996,577.87
Total Personnel Services – Salaries					\$996,577.87
200	<u>Personnel Services – Employee Benefits</u>				
	210 Group Insurance – Contracted Provider				6,212.25
	220 Social Security Contributions				64,038.62
	230 PSERS Retirement Contributions				311,748.86
	250 Unemployment Compensation				517.67
	260 Workers' Compensation				8,059.61
	270 Group Insurance – Self-Insurance				190,776.95
	299 All Other Employee Benefits				3,249.60
Total Personnel Services – Employee Benefits					\$584,603.56
300	<u>Purchased Professional and Technical Services</u>				
	329 Professional Educational Services – Other				3,575.91
	330 Other Professional Services				3,500.00
	390 Other Purchased Professional and Technical Services				1,080.00
Total Purchased Professional and Technical Services					\$8,155.91
400	<u>Purchased Property Services</u>				
	430 Repairs and Maintenance Services				770.84
	440 Rentals				2,189.40
Total Purchased Property Services					\$2,960.24
500	<u>Other Purchased Services</u>				
	530 Communications				7,942.19
	580 Travel				2,488.47
Total Other Purchased Services					\$10,430.66
600	<u>Supplies</u>				
	610 General Supplies				10,926.70
	630 Food				735.35
	640 Books and Periodicals				964.86
	650 Supplies & Fees – Technology Related				9,000.00
Total Supplies					\$21,626.91
800	<u>Other Objects</u>				
	810 Dues and Fees				20,700.21
Total Other Objects					\$20,700.21
Total 2510 Fiscal Services					\$1,645,055.36

General Fund (10)

	<u>Elementary</u>	<u>Secondary</u>	<u>Federal</u>	<u>Total</u>
2511 Supervision of Fiscal Services - Head of Component				
100 Personnel Services – Salaries				
100 Personnel Services – Salaries				331,718.67
Total Personnel Services – Salaries				\$331,718.67
200 Personnel Services – Employee Benefits				
210 Group Insurance – Contracted Provider				4,098.65
220 Social Security Contributions				17,395.10
230 PSERS Retirement Contributions				93,950.22
250 Unemployment Compensation				172.32
260 Workers' Compensation				2,682.87
270 Group Insurance – Self-Insurance				36,192.17
299 All Other Employee Benefits				1,081.72
Total Personnel Services – Employee Benefits				\$155,573.05
300 Purchased Professional and Technical Services				
329 Professional Educational Services – Other				1,533.91
Total Purchased Professional and Technical Services				\$1,533.91
500 Other Purchased Services				
530 Communications				839.80
580 Travel				677.37
Total Other Purchased Services				\$1,517.17
800 Other Objects				
810 Dues and Fees				1,171.00
Total Other Objects				\$1,171.00
Total 2511 Supervision of Fiscal Services - Head of Component				\$491,513.80

General Fund (10)

2513 Receiving and Disbursing Funds Services

Elementary

Secondary

Federal

Total

100 Personnel Services – Salaries

100 Personnel Services – Salaries

147,891.15

Total Personnel Services – Salaries

\$147,891.15

200 Personnel Services – Employee Benefits

210 Group Insurance – Contracted Provider

281.77

220 Social Security Contributions

9,942.73

230 PSERS Retirement Contributions

49,468.33

250 Unemployment Compensation

76.83

260 Workers' Compensation

1,196.11

270 Group Insurance – Self-Insurance

50,145.18

299 All Other Employee Benefits

482.27

Total Personnel Services – Employee Benefits

\$111,593.22

Total 2513 Receiving and Disbursing Funds Services

\$259,484.37

General Fund (10)

2514 Payroll Services

	<u>Elementary</u>	<u>Secondary</u>	<u>Federal</u>	<u>Total</u>
100 Personnel Services – Salaries				
100 Personnel Services – Salaries				109,325.99
Total Personnel Services – Salaries				\$109,325.99
200 Personnel Services – Employee Benefits				
210 Group Insurance – Contracted Provider				326.55
220 Social Security Contributions				7,362.46
230 PSERS Retirement Contributions				36,104.59
250 Unemployment Compensation				56.79
260 Workers' Compensation				884.20
270 Group Insurance – Self-Insurance				35,319.12
299 All Other Employee Benefits				356.51
Total Personnel Services – Employee Benefits				\$80,410.22
500 Other Purchased Services				
530 Communications				419.90
Total Other Purchased Services				\$419.90
Total 2514 Payroll Services				\$190,156.11

General Fund (10)

	<u>Elementary</u>	<u>Secondary</u>	<u>Federal</u>	<u>Total</u>
2515 Financial Accounting Services				
100 Personnel Services – Salaries				
100 Personnel Services – Salaries				368,631.91
Total Personnel Services – Salaries				\$368,631.91
200 Personnel Services – Employee Benefits				
210 Group Insurance – Contracted Provider				1,448.85
220 Social Security Contributions				26,589.62
230 PSERS Retirement Contributions				122,786.63
250 Unemployment Compensation				191.50
260 Workers' Compensation				2,981.41
270 Group Insurance – Self-Insurance				59,477.18
299 All Other Employee Benefits				1,202.09
Total Personnel Services – Employee Benefits				\$214,677.28
300 Purchased Professional and Technical Services				
329 Professional Educational Services – Other				2,042.00
330 Other Professional Services				3,500.00
390 Other Purchased Professional and Technical Services				1,080.00
Total Purchased Professional and Technical Services				\$6,622.00
400 Purchased Property Services				
430 Repairs and Maintenance Services				770.84
440 Rentals				2,189.40
Total Purchased Property Services				\$2,960.24
500 Other Purchased Services				
530 Communications				6,682.49
580 Travel				1,811.10
Total Other Purchased Services				\$8,493.59
600 Supplies				
610 General Supplies				10,926.70
630 Food				735.35
640 Books and Periodicals				964.86
650 Supplies & Fees – Technology Related				9,000.00
Total Supplies				\$21,626.91
800 Other Objects				
810 Dues and Fees				19,529.21
Total Other Objects				\$19,529.21
Total 2515 Financial Accounting Services				\$642,541.14

General Fund (10)

2519 Other Fiscal Services

Elementary

Secondary

Federal

Total

100 Personnel Services – Salaries

100 Personnel Services – Salaries

39,010.15

Total Personnel Services – Salaries

\$39,010.15

200 Personnel Services – Employee Benefits

210 Group Insurance – Contracted Provider

56.43

220 Social Security Contributions

2,748.71

230 PSERS Retirement Contributions

9,439.09

250 Unemployment Compensation

20.23

260 Workers' Compensation

315.02

270 Group Insurance – Self-Insurance

9,643.30

299 All Other Employee Benefits

127.01

Total Personnel Services – Employee Benefits

\$22,349.79

Total 2519 Other Fiscal Services

\$61,359.94

General Fund (10)

2520 Purchasing Services

Elementary Secondary Federal Total

100	<u>Personnel Services – Salaries</u>			
	100 Personnel Services – Salaries			64,179.51
Total Personnel Services – Salaries				\$64,179.51
200	<u>Personnel Services – Employee Benefits</u>			
	210 Group Insurance – Contracted Provider			198.56
	220 Social Security Contributions			4,587.68
	230 PSERS Retirement Contributions			21,291.15
	250 Unemployment Compensation			33.34
	260 Workers' Compensation			519.07
	270 Group Insurance – Self-Insurance			18,588.91
	299 All Other Employee Benefits			209.29
Total Personnel Services – Employee Benefits				\$45,428.00
800	<u>Other Objects</u>			
	810 Dues and Fees			162.00
Total Other Objects				\$162.00
Total 2520 Purchasing Services				\$109,769.51

General Fund (10)

	<u>Elementary</u>	<u>Secondary</u>	<u>Federal</u>	<u>Total</u>
2530 Warehousing and Distributing Services				
100 Personnel Services – Salaries				
100 Personnel Services – Salaries				54,909.74
Total Personnel Services – Salaries				\$54,909.74
200 Personnel Services – Employee Benefits				
210 Group Insurance – Contracted Provider				171.30
220 Social Security Contributions				3,755.49
230 PSERS Retirement Contributions				18,367.02
250 Unemployment Compensation				28.50
260 Workers' Compensation				443.65
270 Group Insurance – Self-Insurance				18,009.67
299 All Other Employee Benefits				178.88
Total Personnel Services – Employee Benefits				\$40,954.51
400 Purchased Property Services				
440 Rentals				4,856.52
Total Purchased Property Services				\$4,856.52
500 Other Purchased Services				
530 Communications				3,827.43
Total Other Purchased Services				\$3,827.43
600 Supplies				
610 General Supplies				(5,622.85)
Total Supplies				(\$5,622.85)
Total 2530 Warehousing and Distributing Services				\$98,925.35

General Fund (10)

2600 Operation and Maintenance of Plant Services

Elementary

Secondary

Federal

Total

100 Personnel Services – Salaries

100 Personnel Services – Salaries 6,932,231.34

Total Personnel Services – Salaries \$6,932,231.34

200 Personnel Services – Employee Benefits

210 Group Insurance – Contracted Provider 16,791.39

220 Social Security Contributions 510,249.00

230 PSERS Retirement Contributions 2,274,532.84

250 Unemployment Compensation 3,427.68

260 Workers' Compensation 53,365.82

270 Group Insurance – Self-Insurance 1,405,428.16

299 All Other Employee Benefits 21,516.83

Total Personnel Services – Employee Benefits \$4,285,311.72

300 Purchased Professional and Technical Services

329 Professional Educational Services – Other 3,564.20

330 Other Professional Services 38,401.55

350 Security / Safety Services 7,000.00

Total Purchased Professional and Technical Services \$48,965.75

400 Purchased Property Services

420 Utility Services 2,152,902.68

430 Repairs and Maintenance Services 655,338.33

440 Rentals 21,133.53

Total Purchased Property Services \$2,829,374.54

500 Other Purchased Services

521 Fire Insurance 169,149.00

522 Automotive Liability Insurance 46,864.50

529 Other Insurance 143,126.00

530 Communications 234,926.20

580 Travel 9,823.59

Total Other Purchased Services \$603,889.29

600 Supplies

610 General Supplies 450,562.17 404,811.82 855,373.99

620 Energy 755,988.85

640 Books and Periodicals 527.55

650 Supplies & Fees – Technology Related 4,000.00

Total Supplies \$450,562.17 \$404,811.82 \$1,615,890.39

700 Property

762 Capitalized Equipment - Replacement 168,147.01

Total Property \$168,147.01

800 Other Objects

810 Dues and Fees 9,434.83

Total Other Objects \$9,434.83

Total 2600 Operation and Maintenance of Plant Services

\$450,562.17

\$404,811.82

\$16,493,244.87

General Fund (10)

	<u>Elementary</u>	<u>Secondary</u>	<u>Federal</u>	<u>Total</u>
2610 Supervision of Operation and Maintenance of Plant Services				
100 Personnel Services – Salaries				
100 Personnel Services – Salaries				1,848,442.67
Total Personnel Services – Salaries				\$1,848,442.67
200 Personnel Services – Employee Benefits				
210 Group Insurance – Contracted Provider				6,980.68
220 Social Security Contributions				130,473.65
230 PSERS Retirement Contributions				600,095.71
250 Unemployment Compensation				958.71
260 Workers' Compensation				14,926.32
270 Group Insurance – Self-Insurance				352,846.37
299 All Other Employee Benefits				6,018.22
Total Personnel Services – Employee Benefits				\$1,112,299.66
300 Purchased Professional and Technical Services				
329 Professional Educational Services – Other				3,564.20
Total Purchased Professional and Technical Services				\$3,564.20
500 Other Purchased Services				
530 Communications				24,043.36
580 Travel				9,042.34
Total Other Purchased Services				\$33,085.70
600 Supplies				
640 Books and Periodicals				527.55
Total Supplies				\$527.55
800 Other Objects				
810 Dues and Fees				3,094.00
Total Other Objects				\$3,094.00
Total 2610 Supervision of Operation and Maintenance of Plant Services				\$3,001,013.78

General Fund (10)

2611 Supervision of Operation and Maintenance of Plant Services – Head of Component

Elementary

Secondary

Federal

Total

100 Personnel Services – Salaries

100 Personnel Services – Salaries

237,135.16

Total Personnel Services – Salaries

\$237,135.16

200 Personnel Services – Employee Benefits

210 Group Insurance – Contracted Provider

3,379.29

220 Social Security Contributions

14,679.64

230 PSERS Retirement Contributions

72,815.36

250 Unemployment Compensation

121.68

260 Workers' Compensation

1,894.44

270 Group Insurance – Self-Insurance

14,979.40

299 All Other Employee Benefits

763.83

Total Personnel Services – Employee Benefits

\$108,633.64

500 Other Purchased Services

580 Travel

4,312.00

Total Other Purchased Services

\$4,312.00

Total 2611 Supervision of Operation and Maintenance of Plant Services – Head of Component

\$350,080.80

General Fund (10)

2619 Supervision of Operation and Maintenance of Plant Services – All Other Supervision

Elementary

Secondary

Federal

Total

100 Personnel Services – Salaries				
100 Personnel Services – Salaries				1,611,307.51
Total Personnel Services – Salaries				\$1,611,307.51
200 Personnel Services – Employee Benefits				
210 Group Insurance – Contracted Provider				3,601.39
220 Social Security Contributions				115,794.01
230 PSERS Retirement Contributions				527,280.35
250 Unemployment Compensation				837.03
260 Workers' Compensation				13,031.88
270 Group Insurance – Self-Insurance				337,866.97
299 All Other Employee Benefits				5,254.39
Total Personnel Services – Employee Benefits				\$1,003,666.02
300 Purchased Professional and Technical Services				
329 Professional Educational Services – Other				3,564.20
Total Purchased Professional and Technical Services				\$3,564.20
500 Other Purchased Services				
530 Communications				24,043.36
580 Travel				4,730.34
Total Other Purchased Services				\$28,773.70
600 Supplies				
640 Books and Periodicals				527.55
Total Supplies				\$527.55
800 Other Objects				
810 Dues and Fees				3,094.00
Total Other Objects				\$3,094.00
Total 2619 Supervision of Operation and Maintenance of Plant Services – All Other Supervision				\$2,650,932.98

General Fund (10)

2620 Operation of Buildings Services

	<u>Elementary</u>	<u>Secondary</u>	<u>Federal</u>	<u>Total</u>
100 Personnel Services – Salaries				
100 Personnel Services – Salaries				4,400,332.78
Total Personnel Services – Salaries				\$4,400,332.78
200 Personnel Services – Employee Benefits				
210 Group Insurance – Contracted Provider				8,466.19
220 Social Security Contributions				329,623.69
230 PSERS Retirement Contributions				1,442,170.85
250 Unemployment Compensation				2,134.48
260 Workers' Compensation				33,231.72
270 Group Insurance – Self-Insurance				909,753.20
299 All Other Employee Benefits				13,398.87
Total Personnel Services – Employee Benefits				\$2,738,779.00
300 Purchased Professional and Technical Services				
330 Other Professional Services				38,401.55
Total Purchased Professional and Technical Services				\$38,401.55
400 Purchased Property Services				
420 Utility Services				2,152,902.68
430 Repairs and Maintenance Services				560,377.18
440 Rentals				19,674.04
Total Purchased Property Services				\$2,732,953.90
500 Other Purchased Services				
521 Fire Insurance				169,149.00
522 Automotive Liability Insurance				46,864.50
529 Other Insurance				143,126.00
530 Communications				210,882.84
580 Travel				781.25
Total Other Purchased Services				\$570,803.59
600 Supplies				
610 General Supplies	368,312.23	330,913.55		699,225.78
620 Energy				698,529.60
650 Supplies & Fees – Technology Related				4,000.00
Total Supplies	\$368,312.23	\$330,913.55		\$1,401,755.38
700 Property				
762 Capitalized Equipment - Replacement				78,376.33
Total Property				\$78,376.33
800 Other Objects				
810 Dues and Fees				6,340.83
Total Other Objects				\$6,340.83
Total 2620 Operation of Buildings Services	\$368,312.23	\$330,913.55		\$11,967,743.36

General Fund (10)

2630 Care and Upkeep of Grounds Services

Elementary

Secondary

Federal

Total

100 Personnel Services – Salaries

100 Personnel Services – Salaries

577,832.59

Total Personnel Services – Salaries

\$577,832.59

200 Personnel Services – Employee Benefits

210 Group Insurance – Contracted Provider

1,175.34

220 Social Security Contributions

42,694.85

230 PSERS Retirement Contributions

197,998.45

250 Unemployment Compensation

280.03

260 Workers' Compensation

4,359.86

270 Group Insurance – Self-Insurance

117,948.80

299 All Other Employee Benefits

1,757.87

Total Personnel Services – Employee Benefits

\$366,215.20

400 Purchased Property Services

430 Repairs and Maintenance Services

78,456.95

440 Rentals

1,459.49

Total Purchased Property Services

\$79,916.44

600 Supplies

610 General Supplies

52,764.83

47,407.09

100,171.92

Total Supplies

\$52,764.83

\$47,407.09

\$100,171.92

700 Property

762 Capitalized Equipment - Replacement

89,770.68

Total Property

\$89,770.68

Total 2630 Care and Upkeep of Grounds Services

\$52,764.83

\$47,407.09

\$1,213,906.83

General Fund (10)

	<u>Elementary</u>	<u>Secondary</u>	<u>Federal</u>	<u>Total</u>
2650 Vehicle Operation and Maintenance Services (Other Than Student Transportation Vehicles)				
100 Personnel Services – Salaries				
100 Personnel Services – Salaries				69,007.92
Total Personnel Services – Salaries				\$69,007.92
200 Personnel Services – Employee Benefits				
210 Group Insurance – Contracted Provider				91.76
220 Social Security Contributions				4,832.35
230 PSERS Retirement Contributions				23,082.58
250 Unemployment Compensation				35.44
260 Workers' Compensation				551.78
270 Group Insurance – Self-Insurance				18,009.69
299 All Other Employee Benefits				222.47
Total Personnel Services – Employee Benefits				\$46,826.07
400 Purchased Property Services				
430 Repairs and Maintenance Services				16,504.20
Total Purchased Property Services				\$16,504.20
600 Supplies				
610 General Supplies	29,485.11	26,491.18		55,976.29
620 Energy				57,459.25
Total Supplies	\$29,485.11	\$26,491.18		\$113,435.54
Total 2650 Vehicle Operation and Maintenance Services (Other Than Student Transportation Vehicles)	\$29,485.11	\$26,491.18		\$245,773.73

General Fund (10)

	<u>Elementary</u>	<u>Secondary</u>	<u>Federal</u>	<u>Total</u>
2660 Safety and Security Services				
100 Personnel Services – Salaries				
100 Personnel Services – Salaries				36,615.38
Total Personnel Services – Salaries				\$36,615.38
200 Personnel Services – Employee Benefits				
210 Group Insurance – Contracted Provider				77.42
220 Social Security Contributions				2,624.46
230 PSERS Retirement Contributions				11,185.25
250 Unemployment Compensation				19.02
260 Workers' Compensation				296.14
270 Group Insurance – Self-Insurance				6,870.10
299 All Other Employee Benefits				119.40
Total Personnel Services – Employee Benefits				\$21,191.79
300 Purchased Professional and Technical Services				
350 Security / Safety Services				7,000.00
Total Purchased Professional and Technical Services				\$7,000.00
Total 2660 Safety and Security Services				\$64,807.17

General Fund (10)

	<u>Elementary</u>	<u>Secondary</u>	<u>Federal</u>	<u>Total</u>
2700 Student Transportation Services				
100 Personnel Services – Salaries				
100 Personnel Services – Salaries				232,567.15
Total Personnel Services – Salaries				\$232,567.15
200 Personnel Services – Employee Benefits				
210 Group Insurance – Contracted Provider				994.31
220 Social Security Contributions				16,951.91
230 PSERS Retirement Contributions				77,342.29
250 Unemployment Compensation				120.48
260 Workers' Compensation				1,875.85
270 Group Insurance – Self-Insurance				43,484.22
299 All Other Employee Benefits				756.34
Total Personnel Services – Employee Benefits				\$141,525.40
300 Purchased Professional and Technical Services				
329 Professional Educational Services – Other				1,488.50
Total Purchased Professional and Technical Services				\$1,488.50
400 Purchased Property Services				
430 Repairs and Maintenance Services				603.01
440 Rentals				878.40
Total Purchased Property Services				\$1,481.41
500 Other Purchased Services				
513 Contracted Carriers			10,000.00	13,046,285.90
516 Student Transportation Services From the IU				9,039.45
530 Communications				7,487.71
550 Printing and Binding				869.54
580 Travel				3,861.14
Total Other Purchased Services			\$10,000.00	\$13,067,543.74
600 Supplies				
610 General Supplies				8,792.50
630 Food				1,355.00
640 Books and Periodicals				414.00
650 Supplies & Fees – Technology Related				16,800.00
Total Supplies				\$27,361.50
800 Other Objects				
810 Dues and Fees				790.63
Total Other Objects				\$790.63
Total 2700 Student Transportation Services			\$10,000.00	\$13,472,758.33

General Fund (10)

2710 Supervision of Student Transportation Services

Elementary

Secondary

Federal

Total

100 Personnel Services – Salaries

100 Personnel Services – Salaries 109,967.58

Total Personnel Services – Salaries \$109,967.58

200 Personnel Services – Employee Benefits

210 Group Insurance – Contracted Provider 490.17

220 Social Security Contributions 8,022.54

230 PSERS Retirement Contributions 36,558.86

250 Unemployment Compensation 56.99

260 Workers' Compensation 887.35

270 Group Insurance – Self-Insurance 19,941.13

299 All Other Employee Benefits 357.78

Total Personnel Services – Employee Benefits \$66,314.82

300 Purchased Professional and Technical Services

329 Professional Educational Services – Other 1,488.50

Total Purchased Professional and Technical Services \$1,488.50

400 Purchased Property Services

430 Repairs and Maintenance Services 603.01

440 Rentals 878.40

Total Purchased Property Services \$1,481.41

500 Other Purchased Services

530 Communications 7,487.71

550 Printing and Binding 869.54

580 Travel 3,861.14

Total Other Purchased Services \$12,218.39

600 Supplies

610 General Supplies 8,792.50

630 Food 1,355.00

640 Books and Periodicals 414.00

650 Supplies & Fees – Technology Related 16,800.00

Total Supplies \$27,361.50

800 Other Objects

810 Dues and Fees 790.63

Total Other Objects \$790.63

Total 2710 Supervision of Student Transportation Services \$219,622.83

General Fund (10)

2719 Supervision of Student Transportation Services – All Other Supervision

Elementary

Secondary

Federal

Total

100 Personnel Services – Salaries

100 Personnel Services – Salaries 109,967.58

Total Personnel Services – Salaries \$109,967.58

200 Personnel Services – Employee Benefits

210 Group Insurance – Contracted Provider 490.17

220 Social Security Contributions 8,022.54

230 PSERS Retirement Contributions 36,558.86

250 Unemployment Compensation 56.99

260 Workers' Compensation 887.35

270 Group Insurance – Self-Insurance 19,941.13

299 All Other Employee Benefits 357.78

Total Personnel Services – Employee Benefits \$66,314.82

300 Purchased Professional and Technical Services

329 Professional Educational Services – Other 1,488.50

Total Purchased Professional and Technical Services \$1,488.50

400 Purchased Property Services

430 Repairs and Maintenance Services 603.01

440 Rentals 878.40

Total Purchased Property Services \$1,481.41

500 Other Purchased Services

530 Communications 7,487.71

550 Printing and Binding 869.54

580 Travel 3,861.14

Total Other Purchased Services \$12,218.39

600 Supplies

610 General Supplies 8,792.50

630 Food 1,355.00

640 Books and Periodicals 414.00

650 Supplies & Fees – Technology Related 16,800.00

Total Supplies \$27,361.50

800 Other Objects

810 Dues and Fees 790.63

Total Other Objects \$790.63

Total 2719 Supervision of Student Transportation Services – All Other Supervision \$219,622.83

LEA : 124159002 West Chester Area SD

Printed 2/3/2020 3:27:26 PM

General Fund (10)

2720 Vehicle Operation Services

Elementary

Secondary

Federal

Total

500 Other Purchased Services

513 Contracted Carriers

10,000.00

6,388,612.78

516 Student Transportation Services From the IU

9,039.45

Total Other Purchased Services

\$10,000.00

\$6,397,652.23

Total 2720 Vehicle Operation Services

\$10,000.00

\$6,397,652.23

General Fund (10)

2750 Nonpublic Transportation

Elementary

Secondary

Federal

Total

100 Personnel Services – Salaries

100 Personnel Services – Salaries

122,599.57

Total Personnel Services – Salaries

\$122,599.57

200 Personnel Services – Employee Benefits

210 Group Insurance – Contracted Provider

504.14

220 Social Security Contributions

8,929.37

230 PSERS Retirement Contributions

40,783.43

250 Unemployment Compensation

63.49

260 Workers' Compensation

988.50

270 Group Insurance – Self-Insurance

23,543.09

299 All Other Employee Benefits

398.56

Total Personnel Services – Employee Benefits

\$75,210.58

500 Other Purchased Services

513 Contracted Carriers

6,657,673.12

Total Other Purchased Services

\$6,657,673.12

Total 2750 Nonpublic Transportation

\$6,855,483.27

General Fund (10)

2800 Support Services – Central

	<u>Elementary</u>	<u>Secondary</u>	<u>Federal</u>	<u>Total</u>
100 Personnel Services – Salaries				
100 Personnel Services – Salaries			12,242.25	1,823,214.71
Total Personnel Services – Salaries			\$12,242.25	\$1,823,214.71
200 Personnel Services – Employee Benefits				
210 Group Insurance – Contracted Provider			21.13	8,807.05
220 Social Security Contributions			934.52	126,310.34
230 PSERS Retirement Contributions			4,092.59	603,873.25
250 Unemployment Compensation				921.06
260 Workers' Compensation				14,340.03
270 Group Insurance – Self-Insurance			1,039.99	312,220.34
299 All Other Employee Benefits				5,781.80
Total Personnel Services – Employee Benefits			\$6,088.23	\$1,072,253.87
300 Purchased Professional and Technical Services				
329 Professional Educational Services – Other			360.00	100,277.02
330 Other Professional Services				29,347.90
340 Technical Services				29,237.43
Total Purchased Professional and Technical Services			\$360.00	\$158,862.35
400 Purchased Property Services				
430 Repairs and Maintenance Services				224,112.47
440 Rentals				1,540.97
Total Purchased Property Services				\$225,653.44
500 Other Purchased Services				
530 Communications				11,688.28
549 Other Advertising/Public Relations				2,896.81
550 Printing and Binding				31.63
580 Travel			772.41	7,591.95
Total Other Purchased Services			\$772.41	\$22,208.67
600 Supplies				
610 General Supplies				16,628.04
630 Food				1,425.20
640 Books and Periodicals			1,310.64	1,389.84
650 Supplies & Fees – Technology Related				252,410.89
Total Supplies			\$1,310.64	\$271,853.97
800 Other Objects				
810 Dues and Fees				33,991.40
Total Other Objects				\$33,991.40
Total 2800 Support Services – Central			\$20,773.53	\$3,608,038.41

General Fund (10)

2810 Planning, Research, Development and Evaluation Services

Elementary

Secondary

Federal

Total

100 Personnel Services – Salaries

100 Personnel Services – Salaries

4,067.96

Total Personnel Services – Salaries

\$4,067.96

200 Personnel Services – Employee Benefits

210 Group Insurance – Contracted Provider

0.82

220 Social Security Contributions

301.73

230 PSERS Retirement Contributions

1,351.72

Total Personnel Services – Employee Benefits

\$1,654.27

500 Other Purchased Services

530 Communications

3,331.75

Total Other Purchased Services

\$3,331.75

Total 2810 Planning, Research, Development and Evaluation Services

\$9,053.98

General Fund (10)

2820 Information Services

Elementary Secondary Federal Total

100	<u>Personnel Services – Salaries</u>			
	100 Personnel Services – Salaries			972,926.18
Total Personnel Services – Salaries				\$972,926.18
200	<u>Personnel Services – Employee Benefits</u>			
	210 Group Insurance – Contracted Provider			4,169.38
	220 Social Security Contributions			67,267.69
	230 PSERS Retirement Contributions			323,686.48
	250 Unemployment Compensation			492.40
	260 Workers' Compensation			7,666.12
	270 Group Insurance – Self-Insurance			192,034.29
	299 All Other Employee Benefits			3,090.93
Total Personnel Services – Employee Benefits				\$598,407.29
300	<u>Purchased Professional and Technical Services</u>			
	340 Technical Services			29,237.43
Total Purchased Professional and Technical Services				\$29,237.43
400	<u>Purchased Property Services</u>			
	430 Repairs and Maintenance Services			223,715.77
Total Purchased Property Services				\$223,715.77
500	<u>Other Purchased Services</u>			
	530 Communications			5,912.65
	580 Travel			3,666.73
Total Other Purchased Services				\$9,579.38
600	<u>Supplies</u>			
	630 Food			675.20
	640 Books and Periodicals			79.20
	650 Supplies & Fees – Technology Related			219,797.64
Total Supplies				\$220,552.04
800	<u>Other Objects</u>			
	810 Dues and Fees			250.00
Total Other Objects				\$250.00
Total 2820 Information Services				\$2,054,668.09

General Fund (10)

2821 Supervision of Information Services

Elementary

Secondary

Federal

Total

100 Personnel Services – Salaries

100 Personnel Services – Salaries

207,868.46

Total Personnel Services – Salaries

\$207,868.46

200 Personnel Services – Employee Benefits

210 Group Insurance – Contracted Provider

2,620.56

220 Social Security Contributions

13,201.86

230 PSERS Retirement Contributions

68,439.44

250 Unemployment Compensation

107.95

260 Workers' Compensation

1,680.61

270 Group Insurance – Self-Insurance

35,303.99

299 All Other Employee Benefits

677.61

Total Personnel Services – Employee Benefits

\$122,032.02

Total 2821 Supervision of Information Services

\$329,900.48

General Fund (10)

2829 Other Information Services

Elementary Secondary Federal Total

100 Personnel Services – Salaries

100 Personnel Services – Salaries 765,057.72

Total Personnel Services – Salaries \$765,057.72

200 Personnel Services – Employee Benefits

210 Group Insurance – Contracted Provider 1,548.82

220 Social Security Contributions 54,065.83

230 PSERS Retirement Contributions 255,247.04

250 Unemployment Compensation 384.45

260 Workers' Compensation 5,985.51

270 Group Insurance – Self-Insurance 156,730.30

299 All Other Employee Benefits 2,413.32

Total Personnel Services – Employee Benefits \$476,375.27

300 Purchased Professional and Technical Services

340 Technical Services 29,237.43

Total Purchased Professional and Technical Services \$29,237.43

400 Purchased Property Services

430 Repairs and Maintenance Services 223,715.77

Total Purchased Property Services \$223,715.77

500 Other Purchased Services

530 Communications 5,912.65

580 Travel 3,666.73

Total Other Purchased Services \$9,579.38

600 Supplies

630 Food 675.20

640 Books and Periodicals 79.20

650 Supplies & Fees – Technology Related 219,797.64

Total Supplies \$220,552.04

800 Other Objects

810 Dues and Fees 250.00

Total Other Objects \$250.00

Total 2829 Other Information Services \$1,724,767.61

General Fund (10)

2830 Staff Services

	<u>Elementary</u>	<u>Secondary</u>	<u>Federal</u>	<u>Total</u>
100 Personnel Services – Salaries				
100 Personnel Services – Salaries				525,240.81
Total Personnel Services – Salaries				\$525,240.81
200 Personnel Services – Employee Benefits				
210 Group Insurance – Contracted Provider				3,017.51
220 Social Security Contributions				35,865.06
230 PSERS Retirement Contributions				172,929.94
250 Unemployment Compensation				272.68
260 Workers' Compensation				4,245.44
270 Group Insurance – Self-Insurance				53,724.02
299 All Other Employee Benefits				1,711.73
Total Personnel Services – Employee Benefits				\$271,766.38
300 Purchased Professional and Technical Services				
329 Professional Educational Services – Other				99,917.02
330 Other Professional Services				29,347.90
Total Purchased Professional and Technical Services				\$129,264.92
400 Purchased Property Services				
430 Repairs and Maintenance Services				396.70
Total Purchased Property Services				\$396.70
500 Other Purchased Services				
530 Communications				2,443.88
549 Other Advertising/Public Relations				2,896.81
550 Printing and Binding				31.63
580 Travel				3,152.81
Total Other Purchased Services				\$8,525.13
600 Supplies				
610 General Supplies				16,532.04
630 Food				750.00
650 Supplies & Fees – Technology Related				32,613.25
Total Supplies				\$49,895.29
800 Other Objects				
810 Dues and Fees				33,741.40
Total Other Objects				\$33,741.40
Total 2830 Staff Services				\$1,018,830.63

General Fund (10)

2831 Supervision of Staff Services

Elementary Secondary Federal Total

100 Personnel Services – Salaries

100 Personnel Services – Salaries 190,217.74

Total Personnel Services – Salaries \$190,217.74

200 Personnel Services – Employee Benefits

210 Group Insurance – Contracted Provider 1,443.66

220 Social Security Contributions 10,971.18

230 PSERS Retirement Contributions 60,935.44

250 Unemployment Compensation 98.65

260 Workers' Compensation 1,535.85

270 Group Insurance – Self-Insurance 17,603.29

299 All Other Employee Benefits 619.24

Total Personnel Services – Employee Benefits \$93,207.31

300 Purchased Professional and Technical Services

329 Professional Educational Services – Other 2,935.00

Total Purchased Professional and Technical Services \$2,935.00

500 Other Purchased Services

530 Communications 1,500.20

580 Travel 2,996.39

Total Other Purchased Services \$4,496.59

800 Other Objects

810 Dues and Fees 1,249.00

Total Other Objects \$1,249.00

Total 2831 Supervision of Staff Services \$292,105.64

General Fund (10)

2832 Recruitment and Placement Services

Elementary

Secondary

Federal

Total

100 Personnel Services – Salaries

100 Personnel Services – Salaries

127,884.32

Total Personnel Services – Salaries

\$127,884.32

200 Personnel Services – Employee Benefits

210 Group Insurance – Contracted Provider

1,086.73

220 Social Security Contributions

9,598.39

230 PSERS Retirement Contributions

42,756.63

250 Unemployment Compensation

66.43

260 Workers' Compensation

1,034.30

270 Group Insurance – Self-Insurance

62.22

299 All Other Employee Benefits

417.02

Total Personnel Services – Employee Benefits

\$55,021.72

800 Other Objects

810 Dues and Fees

(998.00)

Total Other Objects

(\$998.00)

Total 2832 Recruitment and Placement Services

\$181,908.04

General Fund (10)

2835 Health Services

Elementary

Secondary

Federal

Total

100 Personnel Services – Salaries

100 Personnel Services – Salaries

62,914.56

Total Personnel Services – Salaries

\$62,914.56

200 Personnel Services – Employee Benefits

210 Group Insurance – Contracted Provider

225.13

220 Social Security Contributions

4,500.07

230 PSERS Retirement Contributions

21,028.43

250 Unemployment Compensation

32.68

260 Workers' Compensation

508.84

270 Group Insurance – Self-Insurance

16,242.87

299 All Other Employee Benefits

205.16

Total Personnel Services – Employee Benefits

\$42,743.18

300 Purchased Professional and Technical Services

329 Professional Educational Services – Other

80.00

330 Other Professional Services

29,347.90

Total Purchased Professional and Technical Services

\$29,427.90

600 Supplies

610 General Supplies

397.11

Total Supplies

\$397.11

800 Other Objects

810 Dues and Fees

587.00

Total Other Objects

\$587.00

Total 2835 Health Services

\$136,069.75

General Fund (10)

2839 Other Staff Services

Elementary Secondary Federal Total

100 Personnel Services – Salaries

100 Personnel Services – Salaries 144,224.19

Total Personnel Services – Salaries \$144,224.19

200 Personnel Services – Employee Benefits

210 Group Insurance – Contracted Provider 261.99

220 Social Security Contributions 10,795.42

230 PSERS Retirement Contributions 48,209.44

250 Unemployment Compensation 74.92

260 Workers' Compensation 1,166.45

270 Group Insurance – Self-Insurance 19,815.64

299 All Other Employee Benefits 470.31

Total Personnel Services – Employee Benefits \$80,794.17

300 Purchased Professional and Technical Services

329 Professional Educational Services – Other 96,902.02

Total Purchased Professional and Technical Services \$96,902.02

400 Purchased Property Services

430 Repairs and Maintenance Services 396.70

Total Purchased Property Services \$396.70

500 Other Purchased Services

530 Communications 943.68

549 Other Advertising/Public Relations 2,896.81

550 Printing and Binding 31.63

580 Travel 156.42

Total Other Purchased Services \$4,028.54

600 Supplies

610 General Supplies 16,134.93

630 Food 750.00

650 Supplies & Fees – Technology Related 32,613.25

Total Supplies \$49,498.18

800 Other Objects

810 Dues and Fees 32,903.40

Total Other Objects \$32,903.40

Total 2839 Other Staff Services \$408,747.20

General Fund (10)

2840 Data Processing Services

Elementary

Secondary

Federal

Total

100 Personnel Services – Salaries

100 Personnel Services – Salaries

308,737.51

Total Personnel Services – Salaries

\$308,737.51

200 Personnel Services – Employee Benefits

210 Group Insurance – Contracted Provider

1,598.21

220 Social Security Contributions

21,941.34

230 PSERS Retirement Contributions

101,812.52

250 Unemployment Compensation

155.98

260 Workers' Compensation

2,428.47

270 Group Insurance – Self-Insurance

65,422.04

299 All Other Employee Benefits

979.14

Total Personnel Services – Employee Benefits

\$194,337.70

400 Purchased Property Services

440 Rentals

1,540.97

Total Purchased Property Services

\$1,540.97

600 Supplies

610 General Supplies

96.00

Total Supplies

\$96.00

Total 2840 Data Processing Services

\$504,712.18

General Fund (10)

2850 State and Federal Agency Liaison Services

Elementary

Secondary

Federal

Total

100 Personnel Services – Salaries

100 Personnel Services – Salaries

12,242.25

12,242.25

Total Personnel Services – Salaries

\$12,242.25

\$12,242.25

200 Personnel Services – Employee Benefits

210 Group Insurance – Contracted Provider

21.13

21.13

220 Social Security Contributions

934.52

934.52

230 PSERS Retirement Contributions

4,092.59

4,092.59

270 Group Insurance – Self-Insurance

1,039.99

1,039.99

Total Personnel Services – Employee Benefits

\$6,088.23

\$6,088.23

300 Purchased Professional and Technical Services

329 Professional Educational Services – Other

360.00

360.00

Total Purchased Professional and Technical Services

\$360.00

\$360.00

500 Other Purchased Services

580 Travel

772.41

772.41

Total Other Purchased Services

\$772.41

\$772.41

600 Supplies

640 Books and Periodicals

1,310.64

1,310.64

Total Supplies

\$1,310.64

\$1,310.64

Total 2850 State and Federal Agency Liaison Services

\$20,773.53

\$20,773.53

LEA : 124159002 West Chester Area SD

Printed 2/3/2020 3:27:26 PM

General Fund (10)

	<u>Elementary</u>	<u>Secondary</u>	<u>Federal</u>	<u>Total</u>
2900 Other Support Services				
500 Other Purchased Services				
595 IU Payments By Withholding				128,297.37
Total Other Purchased Services				\$128,297.37
800 Other Objects				
899 Pass-Through Funds				137,574.16
Total Other Objects				\$137,574.16
Total 2900 Other Support Services				\$265,871.53

General Fund (10)

2910 Support Services Not Listed Elsewhere In the 2000 Series

Elementary

Secondary

Federal

Total

500 Other Purchased Services

595 IU Payments By Withholding

128,297.37

Total Other Purchased Services

\$128,297.37

Total 2910 Support Services Not Listed Elsewhere In the 2000 Series

\$128,297.37

LEA : 124159002 West Chester Area SD

Printed 2/3/2020 3:27:26 PM

General Fund (10)

2990 Pass-Through Funds

Elementary

Secondary

Federal

Total

800 Other Objects

899 Pass-Through Funds

137,574.16

Total Other Objects

\$137,574.16

Total 2990 Pass-Through Funds

\$137,574.16

General Fund (10)

3000 Operation of Non-Instructional Services

Total

100 Personnel Services – Salaries

100 Personnel Services – Salaries 2,879,490.58

Total Personnel Services – Salaries \$2,879,490.58

200 Personnel Services – Employee Benefits

210 Group Insurance – Contracted Provider 6,286.11

220 Social Security Contributions 214,607.05

230 PSERS Retirement Contributions 742,669.59

250 Unemployment Compensation 353.78

260 Workers' Compensation 5,508.10

270 Group Insurance – Self-Insurance 112,340.52

299 All Other Employee Benefits 2,220.83

Total Personnel Services – Employee Benefits \$1,083,985.98

300 Purchased Professional and Technical Services

329 Professional Educational Services – Other 1,433.68

330 Other Professional Services 121,829.40

350 Security / Safety Services 135,380.26

390 Other Purchased Professional and Technical Services 128,134.15

Total Purchased Professional and Technical Services \$386,777.49

400 Purchased Property Services

430 Repairs and Maintenance Services 22,049.96

440 Rentals 111,952.63

Total Purchased Property Services \$134,002.59

500 Other Purchased Services

510 Student Transportation Services 259,483.40

520 Insurance – General 48,402.00

530 Communications 1,721.92

580 Travel 46,908.42

Total Other Purchased Services \$356,515.74

600 Supplies

610 General Supplies 241,095.87

630 Food 1,206.70

640 Books and Periodicals 5,212.36

Total Supplies \$247,514.93

800 Other Objects

810 Dues and Fees 92,005.55

Total Other Objects \$92,005.55

Total 3000 Operation of Non-Instructional Services \$5,180,292.86

General Fund (10)

3200 Student Activities

Elementary Secondary Federal Total

100 Personnel Services – Salaries				
100 Personnel Services – Salaries				2,877,999.71
Total Personnel Services – Salaries				\$2,877,999.71
200 Personnel Services – Employee Benefits				
210 Group Insurance – Contracted Provider				6,286.11
220 Social Security Contributions				214,491.37
230 PSERS Retirement Contributions				742,127.85
250 Unemployment Compensation				353.78
260 Workers' Compensation				5,508.10
270 Group Insurance – Self-Insurance				112,340.52
299 All Other Employee Benefits				2,220.83
Total Personnel Services – Employee Benefits				\$1,083,328.56
300 Purchased Professional and Technical Services				
329 Professional Educational Services – Other				1,433.68
330 Other Professional Services				121,829.40
350 Security / Safety Services				9,054.77
390 Other Purchased Professional and Technical Services				128,134.15
Total Purchased Professional and Technical Services				\$260,452.00
400 Purchased Property Services				
430 Repairs and Maintenance Services				22,049.96
440 Rentals				111,952.63
Total Purchased Property Services				\$134,002.59
500 Other Purchased Services				
510 Student Transportation Services				259,483.40
520 Insurance – General				48,402.00
530 Communications				1,721.92
580 Travel				45,696.77
Total Other Purchased Services				\$355,304.09
600 Supplies				
610 General Supplies				237,078.11
630 Food				124.55
Total Supplies				\$237,202.66
800 Other Objects				
810 Dues and Fees				91,393.55
Total Other Objects				\$91,393.55
Total 3200 Student Activities				\$5,039,683.16

General Fund (10)

	<u>Elementary</u>	<u>Secondary</u>	<u>Federal</u>	<u>Total</u>
3300 Community Services				
100 Personnel Services – Salaries				
100 Personnel Services – Salaries			1,490.87	1,490.87
Total Personnel Services – Salaries			\$1,490.87	\$1,490.87
200 Personnel Services – Employee Benefits				
220 Social Security Contributions			115.68	115.68
230 PSERS Retirement Contributions			541.74	541.74
Total Personnel Services – Employee Benefits			\$657.42	\$657.42
300 Purchased Professional and Technical Services				
350 Security / Safety Services				126,325.49
Total Purchased Professional and Technical Services				\$126,325.49
500 Other Purchased Services				
580 Travel			1,211.65	1,211.65
Total Other Purchased Services			\$1,211.65	\$1,211.65
600 Supplies				
610 General Supplies			4,017.76	4,017.76
630 Food			1,082.15	1,082.15
640 Books and Periodicals			5,212.36	5,212.36
Total Supplies			\$10,312.27	\$10,312.27
800 Other Objects				
810 Dues and Fees			612.00	612.00
Total Other Objects			\$612.00	\$612.00
Total 3300 Community Services			\$14,284.21	\$140,609.70

General Fund (10)

5000 Other Expenditures and Financing Uses

Total

800 Other Objects

830 Interest 9,881,841.51

Total Other Objects \$9,881,841.51

900 Other Uses of Funds

910 Redemption of Principal 15,690,000.00

932 Capital Reserve Fund Transfers Applicable To Fund 32 5,257,722.00

Total Other Uses of Funds \$20,947,722.00

Total 5000 Other Expenditures and Financing Uses \$30,829,563.51

General Fund (10)

	<u>Elementary</u>	<u>Secondary</u>	<u>Federal</u>	<u>Total</u>
5100 Debt Service / Other Expenditures and Financing Uses				
800 Other Objects				
830 Interest				9,881,841.51
Total Other Objects				\$9,881,841.51
900 Other Uses of Funds				
910 Redemption of Principal				15,690,000.00
Total Other Uses of Funds				\$15,690,000.00
Total 5100 Debt Service / Other Expenditures and Financing Uses				\$25,571,841.51

General Fund (10)

	<u>Elementary</u>	<u>Secondary</u>	<u>Federal</u>	<u>Total</u>
5110 Debt Service				
800 Other Objects				
830 Interest				9,881,841.51
Total Other Objects				\$9,881,841.51
900 Other Uses of Funds				
910 Redemption of Principal				15,690,000.00
Total Other Uses of Funds				\$15,690,000.00
Total 5110 Debt Service				\$25,571,841.51

General Fund (10)

5200 Interfund Transfers – Out

Elementary

Secondary

Federal

Total

900 Other Uses of Funds

932 Capital Reserve Fund Transfers Applicable To Fund 32

5,257,722.00

Total Other Uses of Funds

\$5,257,722.00

Total 5200 Interfund Transfers – Out

\$5,257,722.00

LEA : 124159002 West Chester Area SD

Printed 2/3/2020 3:27:55 PM

General Fund (10)

5230 Capital Projects Fund Transfers

Elementary

Secondary

Federal

Total

900 Other Uses of Funds

932 Capital Reserve Fund Transfers Applicable To Fund 32

5,257,722.00

Total Other Uses of Funds

\$5,257,722.00

Total 5230 Capital Projects Fund Transfers

\$5,257,722.00

Capital Reserve Fund - § 1431 (32)

2000 Support Services

	<u>Total</u>
100 Personnel Services – Salaries	
100 Personnel Services – Salaries	138.36
Total Personnel Services – Salaries	\$138.36
200 Personnel Services – Employee Benefits	
210 Group Insurance – Contracted Provider	0.83
220 Social Security Contributions	9.76
230 PSERS Retirement Contributions	46.25
Total Personnel Services – Employee Benefits	\$56.84
300 Purchased Professional and Technical Services	
330 Other Professional Services	9,328.80
Total Purchased Professional and Technical Services	\$9,328.80
400 Purchased Property Services	
420 Utility Services	35,641.16
Total Purchased Property Services	\$35,641.16
500 Other Purchased Services	
520 Insurance – General	(68,727.50)
Total Other Purchased Services	(\$68,727.50)
600 Supplies	
620 Energy	20,019.19
650 Supplies & Fees – Technology Related	4,819,902.34
Total Supplies	\$4,839,921.53
700 Property	
756 Capitalized Technology Equipment – Original	69,198.70
766 Capitalized Technology Equipment – Replacement	790,431.88
Total Property	\$859,630.58
800 Other Objects	
810 Dues and Fees	7,285.95
Total Other Objects	\$7,285.95
Total 2000 Support Services	\$5,683,275.72

Capital Reserve Fund - § 1431 (32)

2200 Support Services – Instructional Staff

	<u>Elementary</u>	<u>Secondary</u>	<u>Federal</u>	<u>Total</u>
600 Supplies				
650 Supplies & Fees – Technology Related	521,573.02	4,220,652.77		4,742,225.79
Total Supplies	\$521,573.02	\$4,220,652.77		\$4,742,225.79
700 Property				
766 Capitalized Technology Equipment – Replacement		348,457.00		348,457.00
Total Property		\$348,457.00		\$348,457.00
Total 2200 Support Services – Instructional Staff	\$521,573.02	\$4,569,109.77		\$5,090,682.79

LEA : 124159002 West Chester Area SD

Printed 2/3/2020 3:27:32 PM

Capital Reserve Fund - § 1431 (32)

2210 Supervision of Educational Media Services

	<u>Elementary</u>	<u>Secondary</u>	<u>Federal</u>	<u>Total</u>
600 <u>Supplies</u>				
650 Supplies & Fees – Technology Related	12,029.23	10,807.77		22,837.00
Total Supplies	\$12,029.23	\$10,807.77		\$22,837.00
Total 2210 Supervision of Educational Media Services	\$12,029.23	\$10,807.77		\$22,837.00

LEA : 124159002 West Chester Area SD

Printed 2/3/2020 3:27:32 PM

Capital Reserve Fund - § 1431 (32)

2219 Supervision of Educational Media Services – All Other Supervision

	<u>Elementary</u>	<u>Secondary</u>	<u>Federal</u>	<u>Total</u>
600 <u>Supplies</u>				
650 Supplies & Fees – Technology Related	12,029.23	10,807.77		22,837.00
Total Supplies	\$12,029.23	\$10,807.77		\$22,837.00
Total 2219 Supervision of Educational Media Services – All Other Supervision	\$12,029.23	\$10,807.77		\$22,837.00

LEA : 124159002 West Chester Area SD

Printed 2/3/2020 3:27:32 PM

Capital Reserve Fund - § 1431 (32)

2220 Technology Support Services

	<u>Elementary</u>	<u>Secondary</u>	<u>Federal</u>	<u>Total</u>
600 Supplies				
650 Supplies & Fees – Technology Related	509,543.79	4,209,845.00		4,719,388.79
Total Supplies	\$509,543.79	\$4,209,845.00		\$4,719,388.79
700 Property				
766 Capitalized Technology Equipment – Replacement		348,457.00		348,457.00
Total Property		\$348,457.00		\$348,457.00
Total 2220 Technology Support Services	\$509,543.79	\$4,558,302.00		\$5,067,845.79

Capital Reserve Fund - § 1431 (32)

2300 Support Services – Administration

Elementary

Secondary

Federal

Total

300 Purchased Professional and Technical Services

330 Other Professional Services

9,328.80

Total Purchased Professional and Technical Services

\$9,328.80

600 Supplies

650 Supplies & Fees – Technology Related

37,036.07

Total Supplies

\$37,036.07

700 Property

756 Capitalized Technology Equipment – Original

69,198.70

Total Property

\$69,198.70

Total 2300 Support Services – Administration

\$115,563.57

LEA : 124159002 West Chester Area SD

Printed 2/3/2020 3:27:32 PM

Capital Reserve Fund - § 1431 (32)

2350 Legal and Accounting Services

Elementary

Secondary

Federal

Total

300 Purchased Professional and Technical Services

330 Other Professional Services

9,328.80

Total Purchased Professional and Technical Services

\$9,328.80

Total 2350 Legal and Accounting Services

\$9,328.80

LEA : 124159002 West Chester Area SD

Printed 2/3/2020 3:27:32 PM

Capital Reserve Fund - § 1431 (32)

2390 Other Administration Services

Elementary

Secondary

Federal

Total

600 Supplies

650 Supplies & Fees – Technology Related

37,036.07

Total Supplies

\$37,036.07

700 Property

756 Capitalized Technology Equipment – Original

69,198.70

Total Property

\$69,198.70

Total 2390 Other Administration Services

\$106,234.77

LEA : 124159002 West Chester Area SD

Printed 2/3/2020 3:27:32 PM

Capital Reserve Fund - § 1431 (32)

2500 Support Services – Business

Elementary

Secondary

Federal

Total

600 Supplies

650 Supplies & Fees – Technology Related

44,235.92

Total Supplies

\$44,235.92

Total 2500 Support Services – Business

\$44,235.92

LEA : 124159002 West Chester Area SD

Printed 2/3/2020 3:27:32 PM

Capital Reserve Fund - § 1431 (32)

2590 Other Support Services – Business

Elementary

Secondary

Federal

Total

600 Supplies

650 Supplies & Fees – Technology Related

44,235.92

Total Supplies

\$44,235.92

Total 2590 Other Support Services – Business

\$44,235.92

Capital Reserve Fund - § 1431 (32)

2600 Operation and Maintenance of Plant Services

Elementary

Secondary

Federal

Total

400 Purchased Property Services

420 Utility Services

35,641.16

Total Purchased Property Services

\$35,641.16

600 Supplies

620 Energy

20,019.19

Total Supplies

\$20,019.19

Total 2600 Operation and Maintenance of Plant Services

\$55,660.35

Capital Reserve Fund - § 1431 (32)

2620 Operation of Buildings Services

Elementary

Secondary

Federal

Total

400 Purchased Property Services

420 Utility Services

35,641.16

Total Purchased Property Services

\$35,641.16

600 Supplies

620 Energy

20,019.19

Total Supplies

\$20,019.19

Total 2620 Operation of Buildings Services

\$55,660.35

Capital Reserve Fund - § 1431 (32)

2800 Support Services – Central

Elementary

Secondary

Federal

Total

100 Personnel Services – Salaries

100 Personnel Services – Salaries

138.36

Total Personnel Services – Salaries

\$138.36

200 Personnel Services – Employee Benefits

210 Group Insurance – Contracted Provider

0.83

220 Social Security Contributions

9.76

230 PSERS Retirement Contributions

46.25

Total Personnel Services – Employee Benefits

\$56.84

500 Other Purchased Services

520 Insurance – General

(68,727.50)

Total Other Purchased Services

(\$68,727.50)

600 Supplies

650 Supplies & Fees – Technology Related

(3,595.44)

Total Supplies

(\$3,595.44)

700 Property

766 Capitalized Technology Equipment – Replacement

441,974.88

Total Property

\$441,974.88

800 Other Objects

810 Dues and Fees

7,285.95

Total Other Objects

\$7,285.95

Total 2800 Support Services – Central

\$377,133.09

Capital Reserve Fund - § 1431 (32)

2820 Information Services

Elementary Secondary Federal Total

100 Personnel Services – Salaries

100 Personnel Services – Salaries 138.36

Total Personnel Services – Salaries \$138.36

200 Personnel Services – Employee Benefits

210 Group Insurance – Contracted Provider 0.83

220 Social Security Contributions 9.76

230 PSERS Retirement Contributions 46.25

Total Personnel Services – Employee Benefits \$56.84

500 Other Purchased Services

520 Insurance – General (68,727.50)

Total Other Purchased Services (\$68,727.50)

600 Supplies

650 Supplies & Fees – Technology Related (3,595.44)

Total Supplies (\$3,595.44)

700 Property

766 Capitalized Technology Equipment – Replacement 441,974.88

Total Property \$441,974.88

800 Other Objects

810 Dues and Fees 7,285.95

Total Other Objects \$7,285.95

Total 2820 Information Services \$377,133.09

Capital Reserve Fund - § 1431 (32)

2829 Other Information Services

	<u>Elementary</u>	<u>Secondary</u>	<u>Federal</u>	<u>Total</u>
100 Personnel Services – Salaries				
100 Personnel Services – Salaries				138.36
Total Personnel Services – Salaries				\$138.36
200 Personnel Services – Employee Benefits				
210 Group Insurance – Contracted Provider				0.83
220 Social Security Contributions				9.76
230 PSERS Retirement Contributions				46.25
Total Personnel Services – Employee Benefits				\$56.84
500 Other Purchased Services				
520 Insurance – General				(68,727.50)
Total Other Purchased Services				(\$68,727.50)
600 Supplies				
650 Supplies & Fees – Technology Related				(3,595.44)
Total Supplies				(\$3,595.44)
700 Property				
766 Capitalized Technology Equipment – Replacement				441,974.88
Total Property				\$441,974.88
800 Other Objects				
810 Dues and Fees				7,285.95
Total Other Objects				\$7,285.95
Total 2829 Other Information Services				\$377,133.09

Capital Reserve Fund - § 1431 (32)

4000 Facilities Acquisition, Construction and Improvement Services

Total

300 Purchased Professional and Technical Services

330 Other Professional Services 919,475.54

390 Other Purchased Professional and Technical Services 1,127,156.25

Total Purchased Professional and Technical Services \$2,046,631.79

600 Supplies

610 General Supplies 20,747.07

Total Supplies \$20,747.07

700 Property

752 Capital Equipment – Original and Additional 31,693.54

Total Property \$31,693.54

Total 4000 Facilities Acquisition, Construction and Improvement Services \$2,099,072.40

Capital Reserve Fund - § 1431 (32)

4500 Building Acquisition and Construction Services – Original and Additional

Elementary

Secondary

Federal

Total

300 Purchased Professional and Technical Services

330 Other Professional Services

919,475.54

390 Other Purchased Professional and Technical Services

1,112,900.25

Total Purchased Professional and Technical Services

\$2,032,375.79

600 Supplies

610 General Supplies

20,747.07

Total Supplies

\$20,747.07

700 Property

752 Capital Equipment – Original and Additional

31,693.54

Total Property

\$31,693.54

Total 4500 Building Acquisition and Construction Services – Original and Additional

\$2,084,816.40

LEA : 124159002 West Chester Area SD

Printed 2/3/2020 3:27:49 PM

Capital Reserve Fund - § 1431 (32)

4600 Existing Building Improvement Services

Elementary

Secondary

Federal

Total

300 Purchased Professional and Technical Services

390 Other Purchased Professional and Technical Services

14,256.00

Total Purchased Professional and Technical Services

\$14,256.00

Total 4600 Existing Building Improvement Services

\$14,256.00

Other Capital Projects Fund (39)

2000 Support Services

800 Other Objects

810 Dues and Fees

176,732.13

Total Other Objects

\$176,732.13

Total 2000 Support Services

\$176,732.13

LEA : 124159002 West Chester Area SD

Printed 2/3/2020 3:27:35 PM

Other Capital Projects Fund (39)

2300 Support Services – Administration

Elementary

Secondary

Federal

Total

800 Other Objects

810 Dues and Fees

176,732.13

Total Other Objects

\$176,732.13

Total 2300 Support Services – Administration

\$176,732.13

LEA : 124159002 West Chester Area SD

Printed 2/3/2020 3:27:35 PM

Other Capital Projects Fund (39)

2390 Other Administration Services

Elementary

Secondary

Federal

Total

800 Other Objects

810 Dues and Fees

176,732.13

Total Other Objects

\$176,732.13

Total 2390 Other Administration Services

\$176,732.13

Other Capital Projects Fund (39)

4000 Facilities Acquisition, Construction and Improvement Services

Total

100 Personnel Services – Salaries

100 Personnel Services – Salaries 261,561.82

Total Personnel Services – Salaries

\$261,561.82

200 Personnel Services – Employee Benefits

210 Group Insurance – Contracted Provider 2,498.16

220 Social Security Contributions 19,365.04

230 PSERS Retirement Contributions 85,152.33

270 Group Insurance – Self-Insurance 46,253.76

Total Personnel Services – Employee Benefits

\$153,269.29

300 Purchased Professional and Technical Services

330 Other Professional Services 12,578.35

390 Other Purchased Professional and Technical Services 15,138,520.93

Total Purchased Professional and Technical Services

\$15,151,099.28

400 Purchased Property Services

440 Rentals 99,684.81

Total Purchased Property Services

\$99,684.81

600 Supplies

610 General Supplies 55,053.95

Total Supplies

\$55,053.95

700 Property

752 Capital Equipment – Original and Additional 247,635.91

Total Property

\$247,635.91

Total 4000 Facilities Acquisition, Construction and Improvement Services

\$15,968,305.06

Other Capital Projects Fund (39)

	<u>Elementary</u>	<u>Secondary</u>	<u>Federal</u>	<u>Total</u>
4600 Existing Building Improvement Services				
100 Personnel Services – Salaries				
100 Personnel Services – Salaries				261,561.82
Total Personnel Services – Salaries				\$261,561.82
200 Personnel Services – Employee Benefits				
210 Group Insurance – Contracted Provider				2,498.16
220 Social Security Contributions				19,365.04
230 PSERS Retirement Contributions				85,152.33
270 Group Insurance – Self-Insurance				46,253.76
Total Personnel Services – Employee Benefits				\$153,269.29
300 Purchased Professional and Technical Services				
330 Other Professional Services				12,578.35
390 Other Purchased Professional and Technical Services				15,138,520.93
Total Purchased Professional and Technical Services				\$15,151,099.28
400 Purchased Property Services				
440 Rentals				99,684.81
Total Purchased Property Services				\$99,684.81
600 Supplies				
610 General Supplies				55,053.95
Total Supplies				\$55,053.95
700 Property				
752 Capital Equipment – Original and Additional				247,635.91
Total Property				\$247,635.91
Total 4600 Existing Building Improvement Services				\$15,968,305.06

	<u>General Fund(10)</u>	<u>Public Purpose Trust(27)</u>	<u>Other Compt Approved (28)</u>	<u>Athletic / Activity(29)</u>	<u>Capital Reserve (690, 1850)(31)</u>
1000 Instruction					
1100 Regular Programs - Elementary / Secondary	95,019,768.43				
1200 Special Programs - Elementary / Secondary	39,844,670.04				
1300 Vocational Education	6,387,978.65				
1400 Other Instructional Programs - Elementary / Secondary	789,252.06				
1500 Nonpublic School Programs	46,342.17				
Total Instruction	\$142,088,011.35				
2000 Support Services					
2100 Support Services - Students	9,290,791.17				
2200 Support Services - Instructional Staff	5,383,710.17				
2300 Support Services - Administration	11,781,307.94				
2400 Support Services - Pupil Health	2,311,864.25				
2500 Support Services - Business	1,853,750.22				
2600 Operation and Maintenance of Plant Services	16,493,244.87				
2700 Student Transportation Services	13,472,758.33				
2800 Support Services - Central	3,608,038.41				
2900 Other Support Services	265,871.53				
Total Support Services	\$64,461,336.89				
3000 Operation of Non-Instructional Services					
3200 Student Activities	5,039,683.16				
3300 Community Services	140,609.70				
Total Operation of Non-Instructional Services	\$5,180,292.86				
4000 Facilities Acquisition, Construction and Improvement Services					
4500 Building Acquisition and Construction Services - Original and Additional					
4600 Existing Building Improvement Services					
Total Facilities Acquisition, Construction and Improvement					
5000 Other Expenditures and Financing Uses					
5100 Debt Service / Other Expenditures and Financing Uses	25,571,841.51				
5200 Interfund Transfers - Out	5,257,722.00				
Total Other Expenditures and Financing Uses	\$30,829,563.51				
TOTAL ACTUAL EXPENDITURES & OTHER FINANCING USES	\$242,559,204.61				

	<u>Capital Reserve (1431)(32)</u>	<u>Other Capital Projects Fund(39)</u>	<u>Debt Service(40)</u>	<u>Permanent(90)</u>	<u>Total</u>
1000 Instruction					
1100 Regular Programs - Elementary / Secondary					95,019,768.43
1200 Special Programs - Elementary / Secondary					39,844,670.04
1300 Vocational Education					6,387,978.65
1400 Other Instructional Programs - Elementary / Secondary					789,252.06
1500 Nonpublic School Programs					46,342.17
Total Instruction					\$142,088,011.35
2000 Support Services					
2100 Support Services - Students					9,290,791.17
2200 Support Services - Instructional Staff	5,090,682.79				10,474,392.96
2300 Support Services - Administration	115,563.57	176,732.13			12,073,603.64
2400 Support Services - Pupil Health					2,311,864.25
2500 Support Services - Business	44,235.92				1,897,986.14
2600 Operation and Maintenance of Plant Services	55,660.35				16,548,905.22
2700 Student Transportation Services					13,472,758.33
2800 Support Services - Central	377,133.09				3,985,171.50
2900 Other Support Services					265,871.53
Total Support Services	\$5,683,275.72	\$176,732.13			\$70,321,344.74
3000 Operation of Non-Instructional Services					
3200 Student Activities					5,039,683.16
3300 Community Services					140,609.70
Total Operation of Non-Instructional Services					\$5,180,292.86
4000 Facilities Acquisition, Construction and Improvement Services					
4500 Building Acquisition and Construction Services - Original and Additional	2,084,816.40				2,084,816.40
4600 Existing Building Improvement Services	14,256.00	15,968,305.06			15,982,561.06
Total Facilities Acquisition, Construction and Improvement	\$2,099,072.40	\$15,968,305.06			\$18,067,377.46
5000 Other Expenditures and Financing Uses					
5100 Debt Service / Other Expenditures and Financing Uses					25,571,841.51
5200 Interfund Transfers - Out					5,257,722.00
Total Other Expenditures and Financing Uses					\$30,829,563.51
TOTAL ACTUAL EXPENDITURES & OTHER FINANCING USES	\$7,782,348.12	\$16,145,037.19			\$266,486,589.92

LEA : 124159002 West Chester Area SD

Printed 2/3/2020 3:28:21 PM

PSERS Salary Data (Salary Data should relate to the General Fund only)

Amount Description	Amount
Total Salary Base for salaries subject to PSERS withholding	94,469,148.29
Total Federally Funded salaries subject to PSERS withholding	540,265.08
	<hr/>

Title I Expenditure Data

Amount Description	Amount
Expenditures Funded with Current Title I Funds	704,467.00
Expenditures Funded with Carry over Title I Funds	
Total Title I Expenditure Data	<hr/> \$704,467.00 <hr/>

Benefits for Staff Relative to Collective Bargaining Agreements

	OBJECT	COVERED	NOT COVERED	TOTAL
10 General Fund				
	211 Medical Insurance			
	212 Dental Insurance			
	215 Eye Care Insurance			
	216 Prescription Insurance			
	271 Self-Insurance Medical Benefits	12,015,039.59	1,024,372.82	13,039,412.41
	272 Self-Insurance Dental Benefits	918,416.45	80,381.34	998,797.79
	275 Self-Insurance Eye Care Benefits	153,071.31	13,258.14	166,329.45
	276 Self-Insurance Prescription Benefits	3,147,395.81	270,017.87	3,417,413.68
	FUND TOTAL	\$16,233,923.16	\$1,388,030.17	\$17,621,953.33
50 Enterprise Fund	No Self Insurance data to report			
	211 Medical Insurance			
	212 Dental Insurance			
	215 Eye Care Insurance			
	216 Prescription Insurance			
	271 Self-Insurance Medical Benefits			
	272 Self-Insurance Dental Benefits			
	275 Self-Insurance Eye Care Benefits			
	276 Self-Insurance Prescription Benefits			
	FUND TOTAL			
60 Internal Service Fund	No Self Insurance data to report			
	211 Medical Insurance			
	212 Dental Insurance			
	215 Eye Care Insurance			
	216 Prescription Insurance			
	271 Self-Insurance Medical Benefits			
	272 Self-Insurance Dental Benefits			
	275 Self-Insurance Eye Care Benefits			
	276 Self-Insurance Prescription Benefits			
	FUND TOTAL			
Total of All Funds		\$16,233,923.16	\$1,388,030.17	\$17,621,953.33

LEA : 124159002 West Chester Area SD

Printed 2/3/2020 3:28:29 PM

Function	Special Education (Prior Year)	Nonspecial Education (Prior Year)	Total (Prior Year)	Special Education (Current Year)	Nonspecial Education (Current Year)	Total (Current Year)
2120 Guidance Services	2,004,386.71	3,006,580.08	5,010,966.79	2,058,138.22	3,087,207.34	5,145,345.56
2140 Psychological Services	1,853,181.68	205,909.08	2,059,090.76	1,926,579.76	214,064.42	2,140,644.18
2150 Speech Pathology and Audiology Services						
2160 Social Work Services	206,258.69	618,776.08	825,034.77	217,566.17	652,698.50	870,264.67
2260 Instruction and Curriculum Development Services	194,044.64	1,422,994.05	1,617,038.69	199,534.58	1,463,253.57	1,662,788.15
2350 Legal and Accounting Services	22,475.43	290,847.89	313,323.32	22,811.85	280,832.59	303,644.44
2420 Medical Services	330.00	2,420.00	2,750.00	405.00	2,970.00	3,375.00
2440 Nursing Services	257,249.96	1,886,499.70	2,143,749.66	251,320.60	1,843,017.75	2,094,338.35
2700 Student Transportation Services	3,855,916.23	9,509,802.13	13,365,718.36	3,867,316.56	9,605,441.77	13,472,758.33
Total	\$8,393,843.34	\$16,943,829.01	\$25,337,672.35	\$8,543,672.74	\$17,149,485.94	\$25,693,158.68

(PRINCIPAL AMOUNTS ONLY)

GOVERNMENTAL FUNDS/ ACTIVITIES

	Short-Term Borrowing	General Obligation Bonds/Notes	Authority Building Obligations	Other Long-Term Debt	Other Post-Employment Benefits (OPEB)	Compensated Absences	Net Pension Liability	Total
1. Debt at Beginning of Fiscal Year		256,125,000.00			30,031,236.00	4,955,912.00	335,940,000.00	627,052,148.00
2. Additional Debt Incurred During Year		9,990,000.00				1,499,955.00		11,489,955.00
3. Retirements and Repayments		15,690,000.00			620,969.00	1,300,800.00	6,242,000.00	23,853,769.00
4. Debt at End of Fiscal Year		250,425,000.00			29,410,267.00	5,155,067.00	329,698,000.00	614,688,334.00
5. Accreted Interest at End Of Fiscal Year								
6. Total Debt and Accreted Interest		250,425,000.00			29,410,267.00	5,155,067.00	329,698,000.00	614,688,334.00
7. Current Portion P&I - Due within 1 year		25,855,300.00						25,855,300.00
8. Interest Paid during current fiscal year		9,881,843.00						9,881,843.00

(PRINCIPAL AMOUNTS ONLY)

PROPRIETARY FUNDS

- 1. Debt at Beginning of Fiscal Year
- 2. Additional Debt Incurred During Year
- 3. Retirements and Repayments
- 4. Debt at End of Fiscal Year
- 5. Accreted Interest at End Of Fiscal Year
- 6. Total Debt and Accreted Interest
- 7. Current Portion P&I - Due within 1 year
- 8. Interest Paid during current fiscal year

Total Principal and Interest Payments Made by Your School - All Funds

Function	Fund		Principal (910)	Principal (920)	Interest (830)	Total (Principal +Interest)	Misc Other Uses (990)
5110	10	General Fund	15,690,000.00		9,881,841.51	25,571,841.51	
5110	20	Special Revenue Funds					
5110	30	Capital Projects Funds					
5110	40	Debt Service Fund					
5110	90	Permanent Fund					
5120	10	General Fund					
5120	20	Special Revenue Funds					
5120	30	Capital Projects Funds					
5120	40	Debt Service Fund					

Total Debt Payments - Governmental Funds			\$15,690,000.00		\$9,881,841.51	\$25,571,841.51	
---	--	--	------------------------	--	-----------------------	------------------------	--

Function	Fund		Principal (910)	Principal (920)	Interest (830)	Total (Principal +Interest)
5110	50	Enterprise Fund				
5110	60	Internal Service Fund				
5120	50	Enterprise Fund				
5120	60	Internal Service Fund				

Total Debt Payments - Proprietary Funds							
--	--	--	--	--	--	--	--

Debt Details
Governmental Funds/ Activities

Debt Category	Debt Issue Date (MM/YYYY)	Principal Amounts Only			Debt at End of Fiscal Year	Current Portion Due Within One Year (Principal and Interest)	Interest Paid During Fiscal Year
		Debt at Beginning of Fiscal Year	Additions	Reductions / Repayments			
General Obligation Bonds/Notes – CIB	12/2017	9,750,000.00		5,000.00	9,745,000.00	242,563.00	237,650.00
General Obligation Bonds/Notes – CIB	12/2017		9,990,000.00		9,990,000.00	341,702.00	177,704.00
General Obligation Bonds/Notes – CIB	05/2017	7,215,000.00		590,000.00	6,625,000.00	734,315.00	141,265.00
General Obligation Bonds/Notes – CIB	12/2016	8,495,000.00		5,000.00	8,490,000.00	1,253,770.00	254,613.00
General Obligation Bonds/Notes – CIB	04/2016	32,020,000.00		5,000.00	32,015,000.00	259,512.00	1,248,838.00
General Obligation Bonds/Notes – CIB	01/2016	11,985,000.00		1,810,000.00	10,175,000.00	2,348,750.00	535,900.00
General Obligation Bonds/Notes – CIB	09/2015	2,970,000.00		710,000.00	2,260,000.00	780,200.00	74,100.00
General Obligation Bonds/Notes – CIB	08/2015	9,680,000.00		5,000.00	9,675,000.00	262,608.00	257,673.00
General Obligation Bonds/Notes – CIB	09/2014	56,740,000.00		280,000.00	56,460,000.00	2,478,500.00	2,196,900.00
General Obligation Bonds/Notes – CIB	01/2014	26,390,000.00		5,000.00	26,385,000.00	2,099,250.00	1,299,350.00
General Obligation Bonds/Notes – CIB	01/2014	12,000,000.00			12,000,000.00	489,763.00	489,763.00
General Obligation Bonds/Notes – CIB	01/2013	2,490,000.00		815,000.00	1,675,000.00	850,250.00	41,650.00
General Obligation Bonds/Notes – CIB	08/2012	31,150,000.00		8,295,000.00	22,855,000.00	8,867,950.00	1,407,700.00
General Obligation Bonds/Notes – CIB	08/2012	21,000,000.00			21,000,000.00	630,000.00	630,000.00
General Obligation Bonds/Notes – CIB	12/2010	14,280,000.00		3,160,000.00	11,120,000.00	3,813,100.00	649,500.00
General Obligation Bonds/Notes – CIB	10/2009	9,960,000.00		5,000.00	9,955,000.00	403,067.00	239,237.00
Compensated Absences		4,955,912.00	1,499,955.00	1,300,800.00	5,155,067.00		
Other Post-Employment Benefits (OPEB)		30,031,236.00		620,969.00	29,410,267.00		
Net Pension Liability		335,940,000.00		6,242,000.00	329,698,000.00		
Totals for Debt Entered:		\$627,052,148.00	\$11,489,955.00	\$23,853,769.00	\$614,688,334.00	\$25,855,300.00	\$9,881,843.00

General Fund (10)

Section 1: Tuition/Purchased Services as Reported within Expenditure Detail

	Amount
Tuition Reported in General Fund Expenditures 1000-560	15,502,072.62
Purchased Services in General Fund Expenditures 1000-594 and 1000-597	2,784.06
Section 1 Total	\$15,504,856.68

Section 2: Tuition Paid to Institution Types During Fiscal Year

	Tuition Paid For Nonspecial Education	Tuition Paid For Special Education	Total
1 1306 Institutions		886,379.22	886,379.22
2 Institutionalized Children's Programs		2,784.06	2,784.06
3 Juveniles Incarcerated in Adult Facilities			
4 Residential Treatment Facilities			
5 Other Local Education Agencies	43,450.60	192,759.07	236,209.67
6 Brick and Mortar Charter Schools	3,483,212.79	2,152,903.64	5,636,116.43
7 Cyber Charter Schools	1,632,663.50	1,009,116.40	2,641,779.90
8 Career and Technology Centers	2,738,785.34		2,738,785.34
9 Approved Private Schools		2,528,262.28	2,528,262.28
10 PA Chartered Schools for the Deaf and Blind			
11 Private Residential Rehabilitative Institutions	504.00	98,272.22	98,776.22
12 Juvenile Detention Centers			
13 Special Program Jointures			
14 Other Tuition Not Included Elsewhere In This Section	12,658.00	723,105.56	735,763.56
Section 2 Total	\$7,911,274.23	\$7,593,582.45	\$15,504,856.68

Food Service / Cafeteria Operations Fund (51)

3000 Operation of Non-Instructional Services

Total

500 Other Purchased Services

570 Food Service Management

3,371,039.00

Total Other Purchased Services

\$3,371,039.00

700 Property

740 Depreciation

111,880.00

Total Property

\$111,880.00

Total 3000 Operation of Non-Instructional Services

\$3,482,919.00

Food Service / Cafeteria Operations Fund (51)

	<u>Elementary</u>	<u>Secondary</u>	<u>Federal</u>	<u>Total</u>
3100 Food Services				
500 <u>Other Purchased Services</u>				
570 Food Service Management				3,371,039.00
Total Other Purchased Services				\$3,371,039.00
700 <u>Property</u>				
740 Depreciation				111,880.00
Total Property				\$111,880.00
Total 3100 Food Services				\$3,482,919.00

	<u>Food Service(51)</u>	<u>Child Care Operations(52)</u>	<u>Other Enterprise(58)</u>	<u>Internal Service(60)</u>	<u>Total</u>
3000 <u>Operation of Non-Instructional Services</u>					
3100 Food Services	3,482,919.00				3,482,919.00
Total Operation of Non-Instructional Services	\$3,482,919.00				\$3,482,919.00
TOTAL ACTUAL EXPENDITURES & OTHER FINANCING USES	\$3,482,919.00				\$3,482,919.00

LEA : 124159002 West Chester Area SD

Printed 2/3/2020 3:29:04 PM

Fund	School	School Number	Local Personnel	Local Nonpersonnel	State Personnel	State Nonpersonnel	Federal Personnel	Federal Nonpersonnel	Total	Explanation
10	E N Peirce MS	1452	10,126,735.70	1,894,070.78	2,819,130.30	527,280.71	19,244.59	120,152.99	15,506,615.07	
	East Bradford El Sch	1392	4,546,207.80	796,805.63	1,265,595.61	221,818.66	73,987.29	51,173.30	6,955,588.29	
	East Goshen El Sch	1395	4,390,274.98	757,531.88	1,222,186.26	210,885.43	114,270.72	48,427.76	6,743,577.03	
	Exton El Sch	1456	5,190,153.70	1,030,553.36	1,444,860.41	286,890.50	10,566.68	65,972.77	8,028,997.42	
	Fern Hill El Sch	1454	5,016,954.66	997,957.98	1,396,644.42	277,816.43	188,347.88	64,372.82	7,942,094.19	
	Glen Acres El Sch	4812	5,302,958.18	1,061,115.91	1,476,263.48	295,398.65	142,038.05	68,235.70	8,346,009.97	
	Hillsdale El Sch	6910	5,216,705.96	1,077,664.64	1,452,252.17	300,005.56	186,257.94	69,088.71	8,301,974.98	
	J R Fugett MS	5137	9,377,492.23	1,613,602.23	2,610,552.23	449,202.49	16,353.42	102,102.06	14,169,304.66	
	Mary C Howse El Sch	1457	5,344,487.01	1,143,901.80	1,487,824.48	318,444.99	11,762.80	73,440.67	8,379,861.75	
	Penn Wood El Sch	4813	4,844,555.03	922,392.04	1,348,650.96	256,780.02	9,440.29	58,940.14	7,440,758.48	
	Sarah W Starkweather El Sch	7324	5,153,524.65	1,062,790.80	1,434,663.44	295,864.86	10,965.66	68,463.75	8,026,273.16	
	Stetson MS	1451	9,498,183.96	1,642,179.86	2,644,150.98	457,158.07	16,477.69	102,877.95	14,361,028.51	
	West Chester Bayard Rustin HS	7894	13,664,249.88	2,491,559.54	3,803,920.83	693,612.55	23,870.22	149,033.01	20,826,246.03	
	West Chester East HS	6734	13,131,778.39	2,449,016.37	3,655,688.81	681,769.18	23,016.85	143,705.00	20,084,974.60	
	West Chester Henderson HS	1453	13,749,381.84	2,519,608.05	3,827,620.28	701,420.84	23,773.88	148,431.49	20,970,236.38	
	Westtown-Thornbury El Sch	1458	4,681,787.04	961,904.03	1,303,338.82	267,779.56	9,930.70	62,002.04	7,286,742.19	
Total			119,235,431.01	22,422,654.90	33,193,343.48	6,242,128.50	880,304.66	1,396,420.16	183,370,282.71	